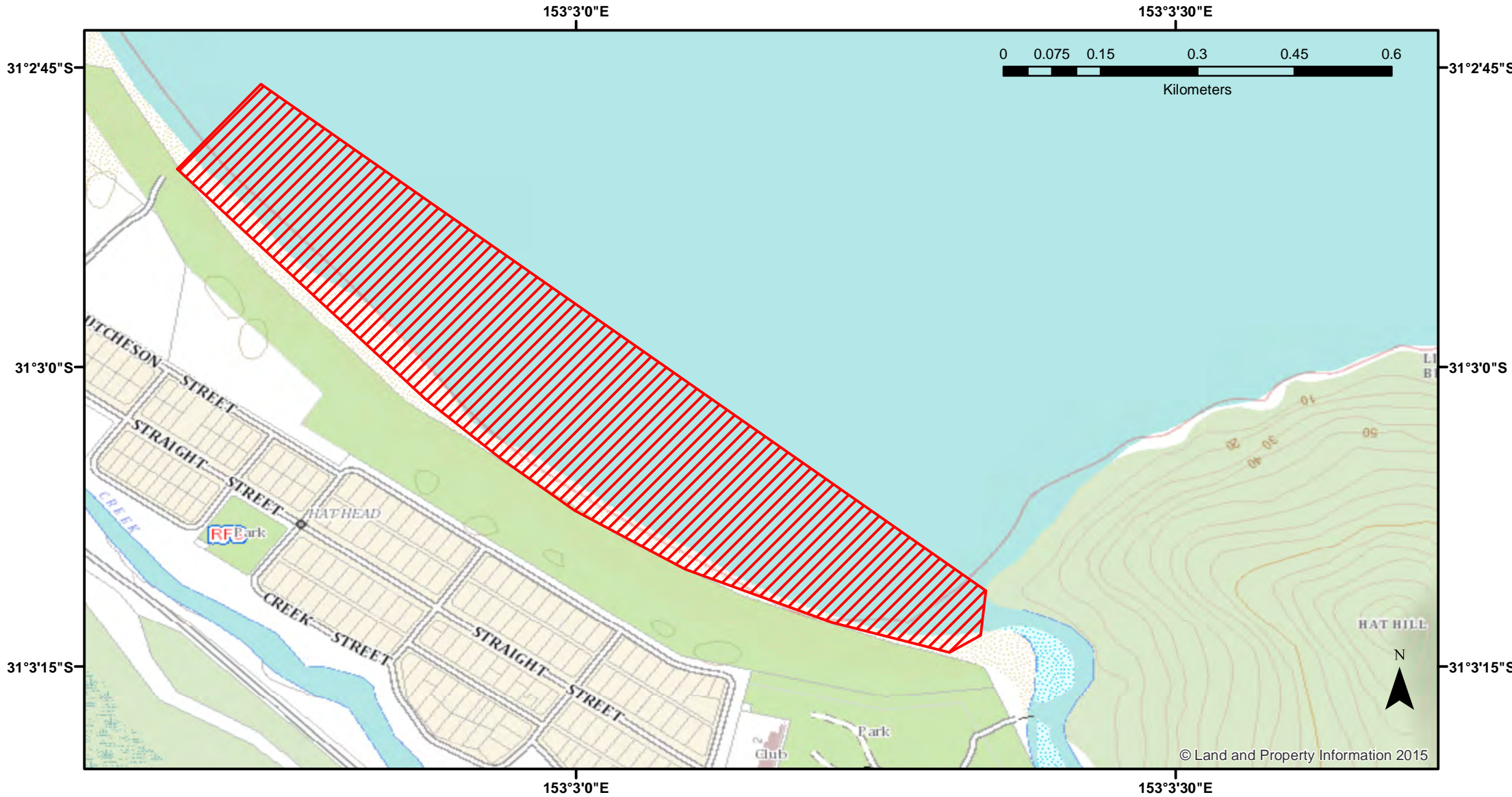


# Ocean Hauling - Hat Head Beach



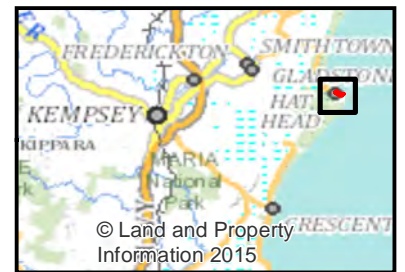
Closure

NSW DPI 15 February 2018  
Coordinates are shown in WGS84

Notice to Map Users  
Additional closures may apply. Primary Industries and its employees disclaim all liability for any actions or consequences arising from the use of this information. This map is not to be used for navigational purposes as it is indicative only and not guaranteed to be free of error or omission.

**Closed Waters**  
That portion of Hat Head Beach for a distance of 1,000 metres from Korogoro Creek mouth, north to a pedestrian access no. 6

**Closure Period**  
Between sunrise and sunset in the period from 15 December to 31 January in the succeeding year



© Land and Property Information 2015