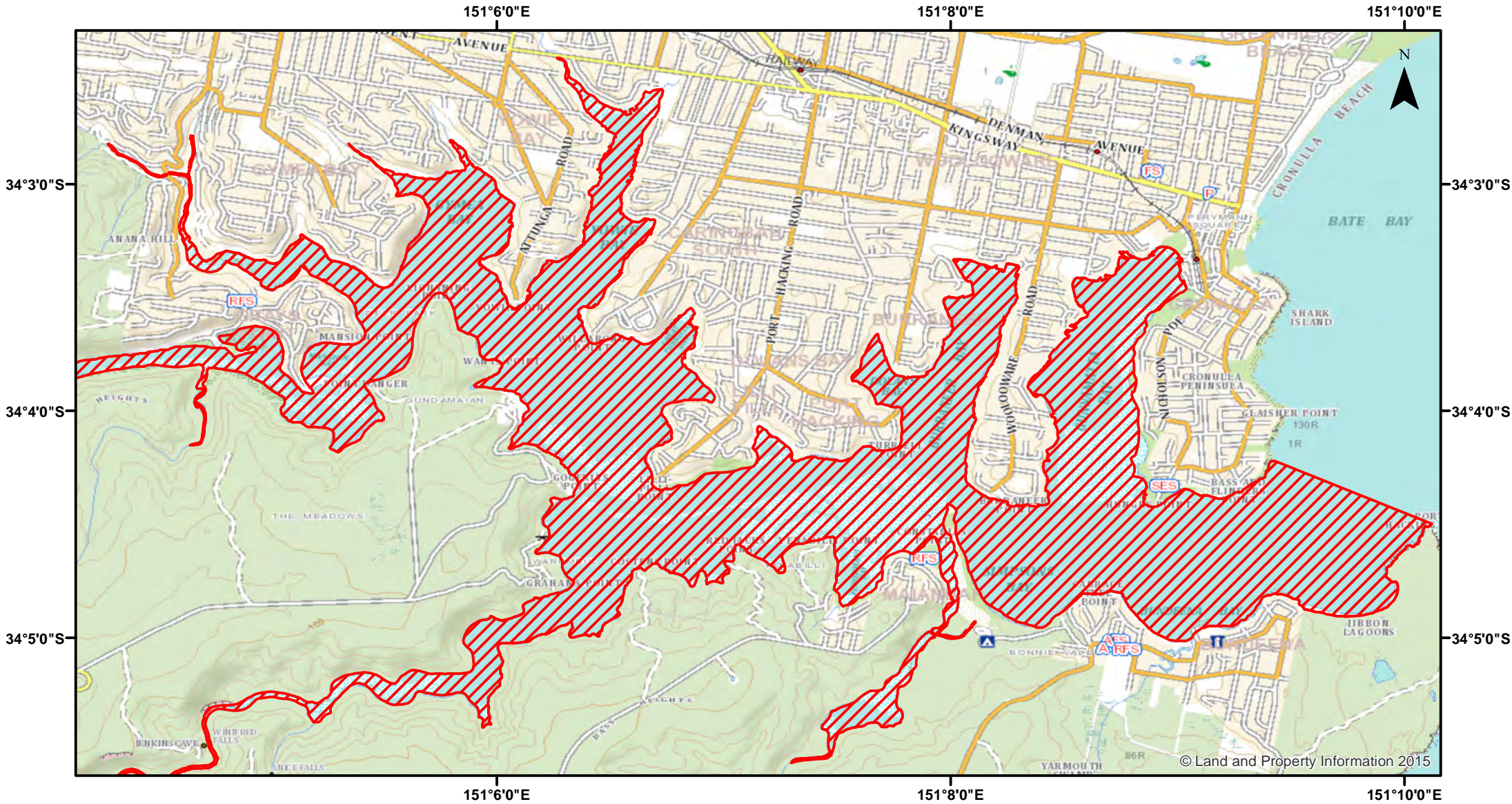


Spearfishing - Port Hacking

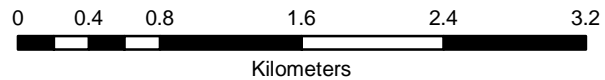


Closure

NSW DPI 2 May 2018

Coordinates are shown in WGS84

Closed Waters
 The whole of the waters of Port Hacking and its tributaries west of a line drawn from the eastern extremity of Glashier Point to the northern extremity of Port Hacking Point.



Notice to Map Users
 Additional closures may apply. Primary Industries and its employees disclaim all liability for any actions or consequences arising from the use of this information. This map is not to be used for navigational purposes as it is indicative only and not guaranteed to be free of error or omission.

