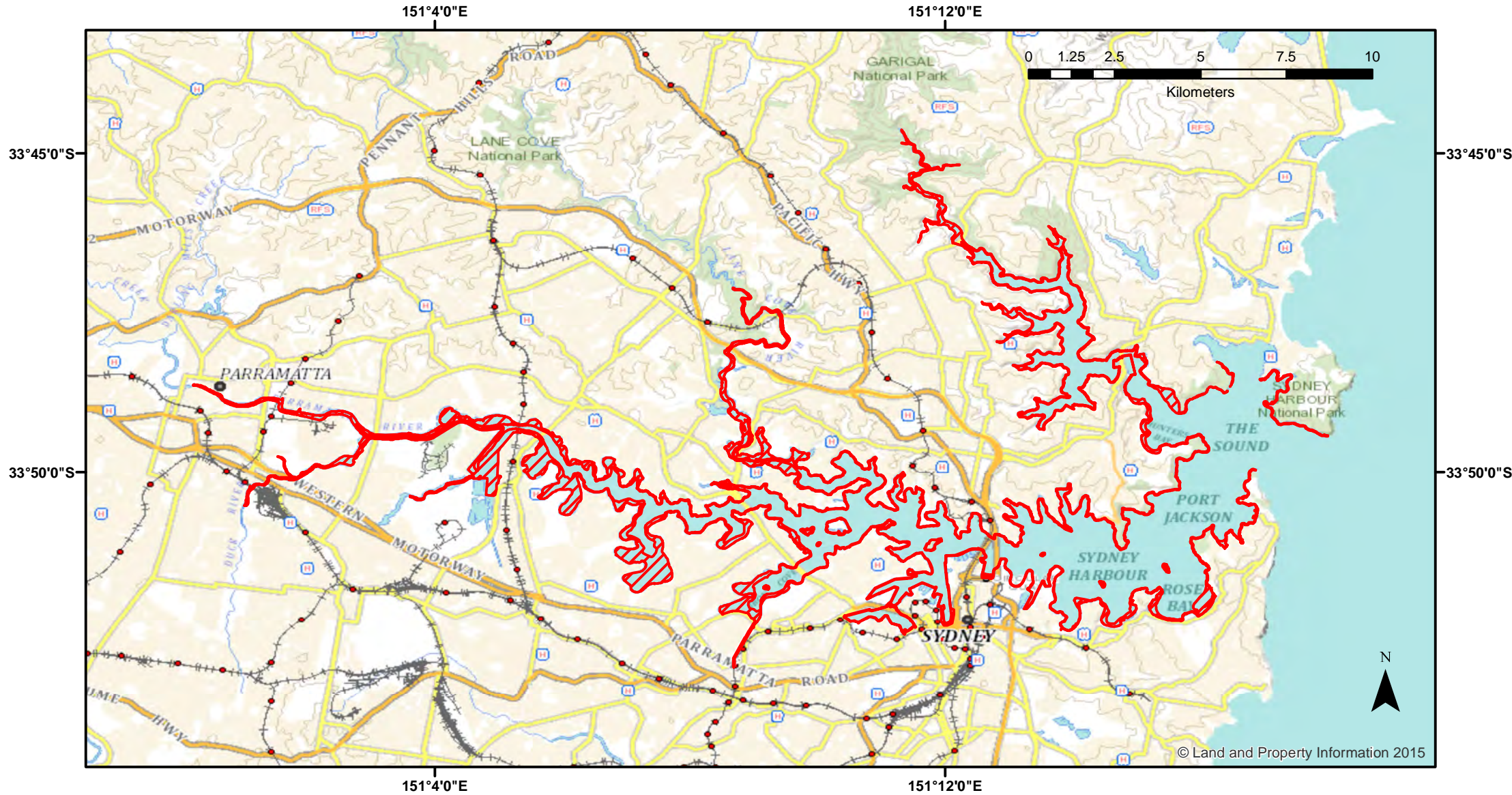


Sydney Harbour - Intertidal Protected Areas



Closure

NSW DPI 30 April 2018
Coordinates are shown in WGS84

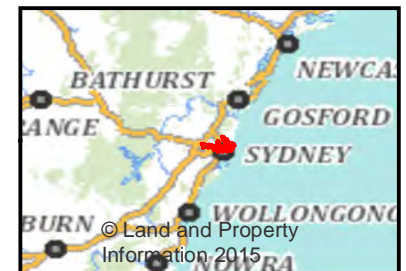
Notice to Map Users
Additional closures may apply. Primary Industries and its employees disclaim all liability for any actions or consequences arising from the use of this information. This map is not to be used for navigational purposes as it is indicative only and not guaranteed to be free of error or omission.

Closed Waters

The whole of the foreshores of Sydney Harbour and its tributaries, west (upstream) of a line from the southern extremity of North Head to the northern extremity of South Head, but excluding those waters of North Harbour which are north of a line from Manly Point to the south end of Forty Baskets Beach (including that part of the foreshore between the mean high water mark and a line drawn 10 metres seaward of the mean low water mark).

Prohibited Species

All species of cunjevoi (*Pyura* spp.) and invertebrates, except abalone, eastern rocklobster (*Jasus verreauxi*) and Southern Rocklobster (*Jasus edwardsii*).



© Land and Property Information 2015