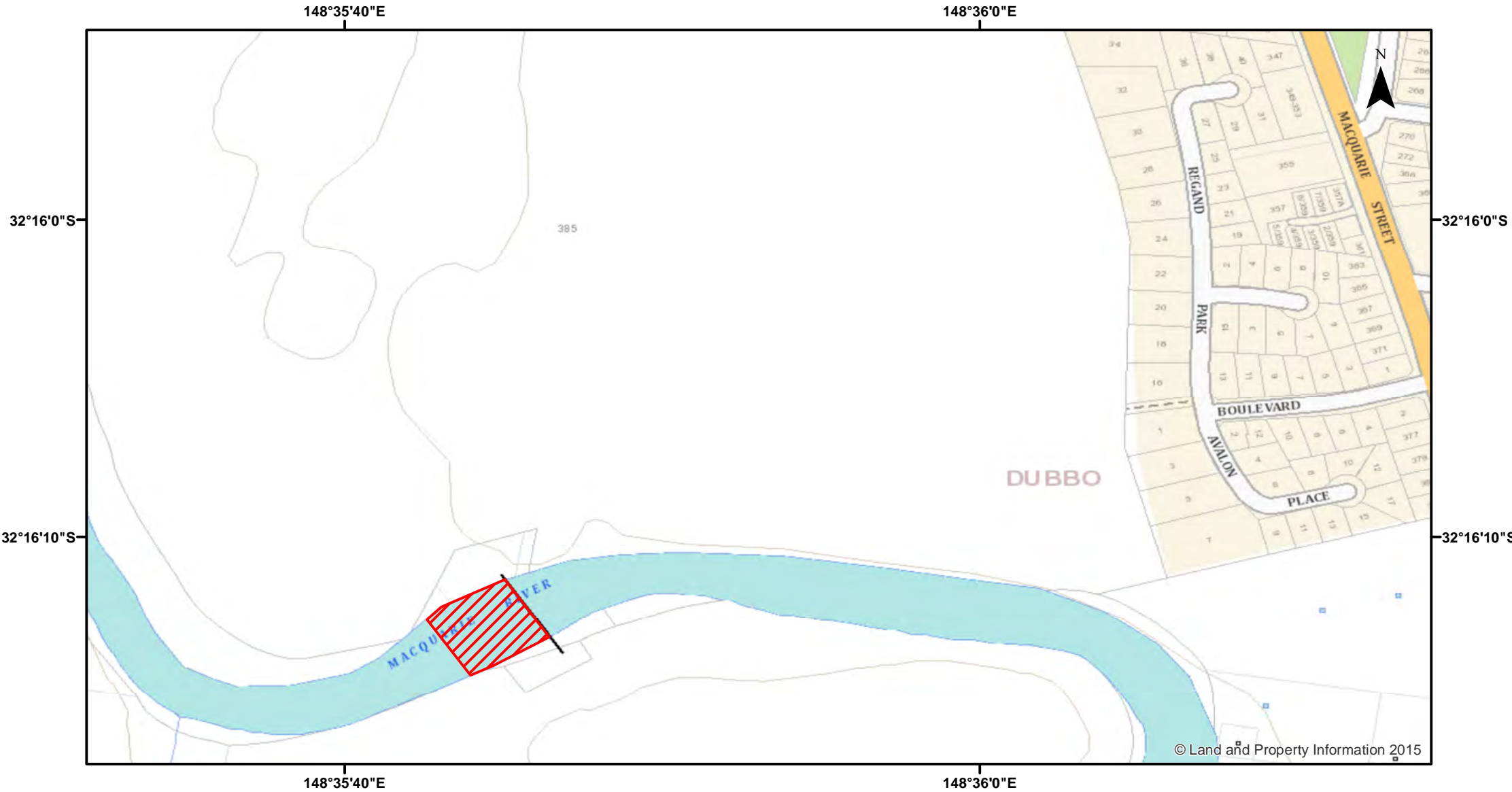


Macquarie River - South Dubbo Weir



Closure

NSW DPI 7 August 2018
Coordinates are shown in WGS84

Closed Waters
The Macquarie River at South Dubbo Weir, 75m downstream of the weir face.

Prohibited Method
Any Method

Notice to Map Users
Additional closures may apply. Primary Industries and its employees disclaim all liability for any actions or consequences arising from the use of this information. This map is not to be used for navigational purposes as it is indicative only and not guaranteed to be free of error or omission.

