

Orara River (Upper Reaches) - Nets

152°40'0"E

152°50'0"E

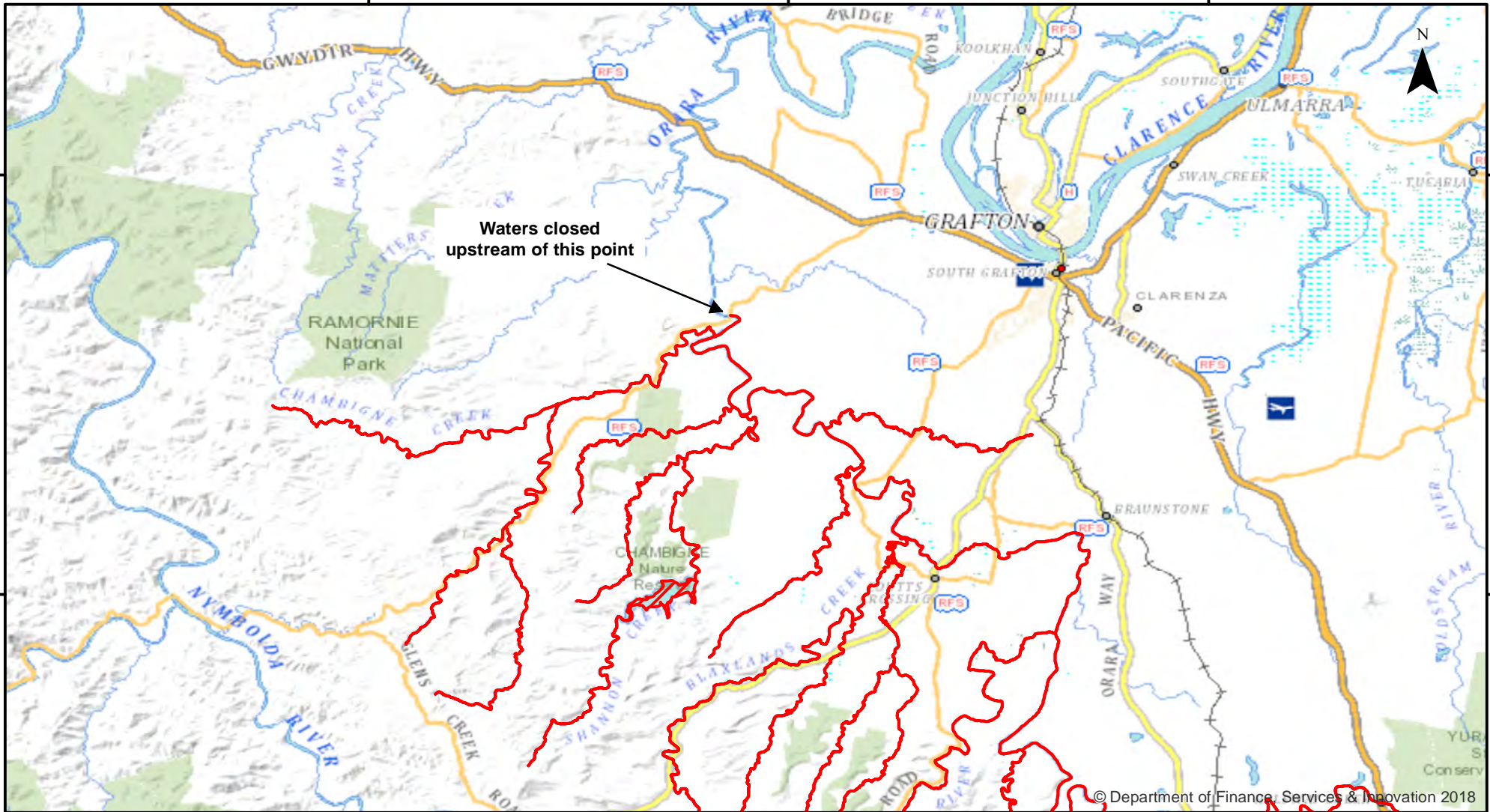
153°0'0"E

29°40'0"S

29°40'0"S

29°50'0"S

29°50'0"S



Waters closed upstream of this point

© Department of Finance, Services & Innovation 2018

152°40'0"E

152°50'0"E

153°0'0"E



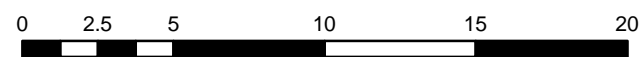
Closure

NSW DPI 14 August 2018
Coordinates are shown in WGS84

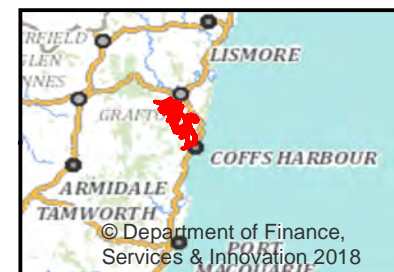
Notice to Map Users
Additional closures may apply. Primary Industries and its employees disclaim all liability for any actions or consequences arising from the use of this information. This map is not to be used for navigational purposes as it is indicative only and not guaranteed to be free of error or omission.

Closed Waters
The non-tidal waters of the Orara River and its tributaries, upstream from Bawden Bridge to its source.

Prohibited Method
Nets, other than a landing net.



Kilometers



© Department of Finance, Services & Innovation 2018