



Department of  
Primary Industries



Local Land  
Services

NSW Primary Industries  
**Climate Change  
Research Strategy**



Energy



Carbon  
Opportunities



Climate  
Resilience

**Farm  
Energy  
Forum**

# Farm Energy Forum



# Help primary industries improve energy efficiency and reduce costs

## NSW Primary Industries Climate Change Strategy Project 2

Michael Cashen and John O'Connor



# NSW Climate Change Fund



## History

Set up in 2007, administered by the NSW Office of Environment and Heritage.

## Funds source

Contributions from all NSW electricity consumers.

## Use

Deliver practical measures to save energy and water, reduce greenhouse gas emissions and manage the impacts of climate change.

## Total funds

(2017 - 2022 \$1.4 billion invested)

The cover features a large white circle on a blue background. Inside the circle, the NSW Government logo and 'Department of Primary Industries' are at the top. Below them is the title 'NSW Primary Industries Climate Change Research Strategy'. A circular inset shows a landscape with green fields and a red dirt road. To the right of the inset are three icons: a lightning bolt for 'Energy', a tree for 'Carbon Opportunities', and a house with a leaf for 'Climate Resilience'.

NSW  
GOVERNMENT

Department of  
Primary Industries

NSW Primary Industries  
**Climate Change  
Research Strategy**



Energy



Carbon  
Opportunities



Climate  
Resilience



# Aim

The project aims is to reduce industry vulnerability to rising energy costs, increase sector/farm profitability and improved competitiveness of NSW primary industries





Australian  
Farm Institute



research report  
The impacts of energy costs on  
the Australian agriculture sector

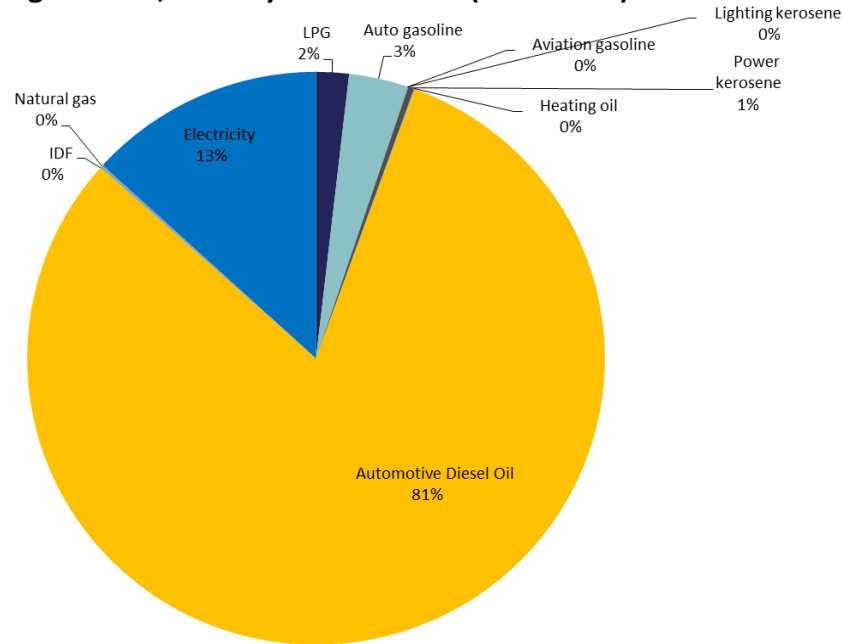
August 2018

© 2018 Australian Farm Institute  
ISBN 978-1-921808-43-2



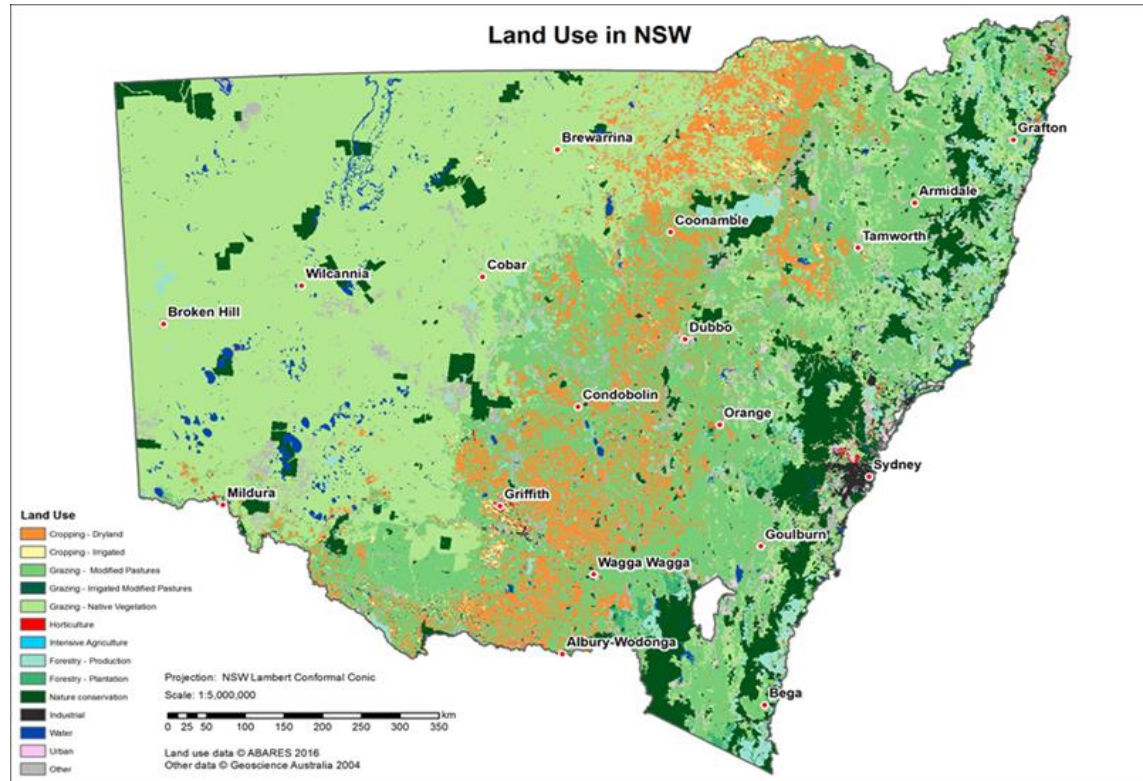
# What drives Ag in NSW?

**NSW energy consumption by source -Div A-  
Agriculture, forestry and fisheries (1973-2015)**





# Big and complex sector



# Strategy

To meet the diverse agricultural needs across the state –  
two complimentary strategies will be implemented;

# Strategy

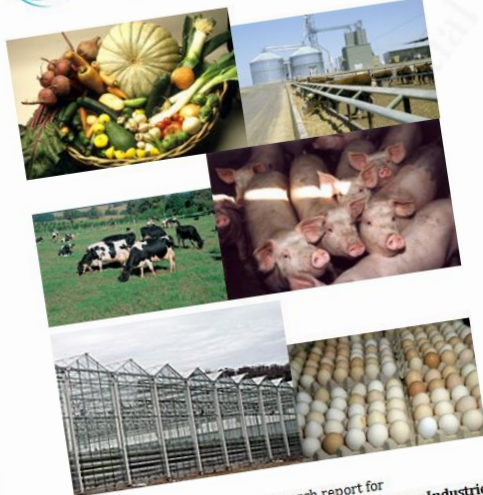
Part 1. A **conventional energy efficiency** focused initiative delivered **through training and awareness campaigns** focusing on the extensive and broadacre irrigated sectors, and

# Strategy

Part 2. A **series of funded pilots** to serve focusing on the **intensive sector** which will act as case studies for new and novel approaches and technology



## Exploring the potential for primary industries to improve energy productivity



A research report for  
New South Wales Department of Primary Industries  
December 2018



Department of  
Primary Industries





# Sub sectors identified as potential pilot

Using these criteria, the sub-sectors selected for focus in this study were:

- Cattle feedlots
- Dairy farming/on-farm processing
- Horticulture, with a focus on more intensive operations
- Chicken meat and egg production
- Piggeries



## In Scope

- On-farm opportunities that relate to the improvement of farm energy demand management through either an enhancement of farm energy efficiency and or farm energy productivity. They may take the form of either;
- education and extension programs
- on-farm pilots, case studies and related demonstrations.

## Out of Scope

- Off-farm supply chain projects that are covered under existing state and federal government
- energy focused programs and associated financial assistance packages.

# Phases

- Targeted Request for Proposals  
(Sept 19)
  - Feasibility assessment ( 10 @ \$50K)  
(Nov 19- Feb 20)
    - Pilots (5 @ \$350k)  
(June 20-June 22)

# Key Contacts

## Pilots

Michael Cashen

[michael.cashen@dpi.nsw.gov.au](mailto:michael.cashen@dpi.nsw.gov.au)

(0428) 968 909

## Training and Forums

John O'Connor

[john.o'connor@dpi.nsw.gov.au](mailto:john.o'connor@dpi.nsw.gov.au)

(0412) 359 084



ANY  
QUESTIONS  
?