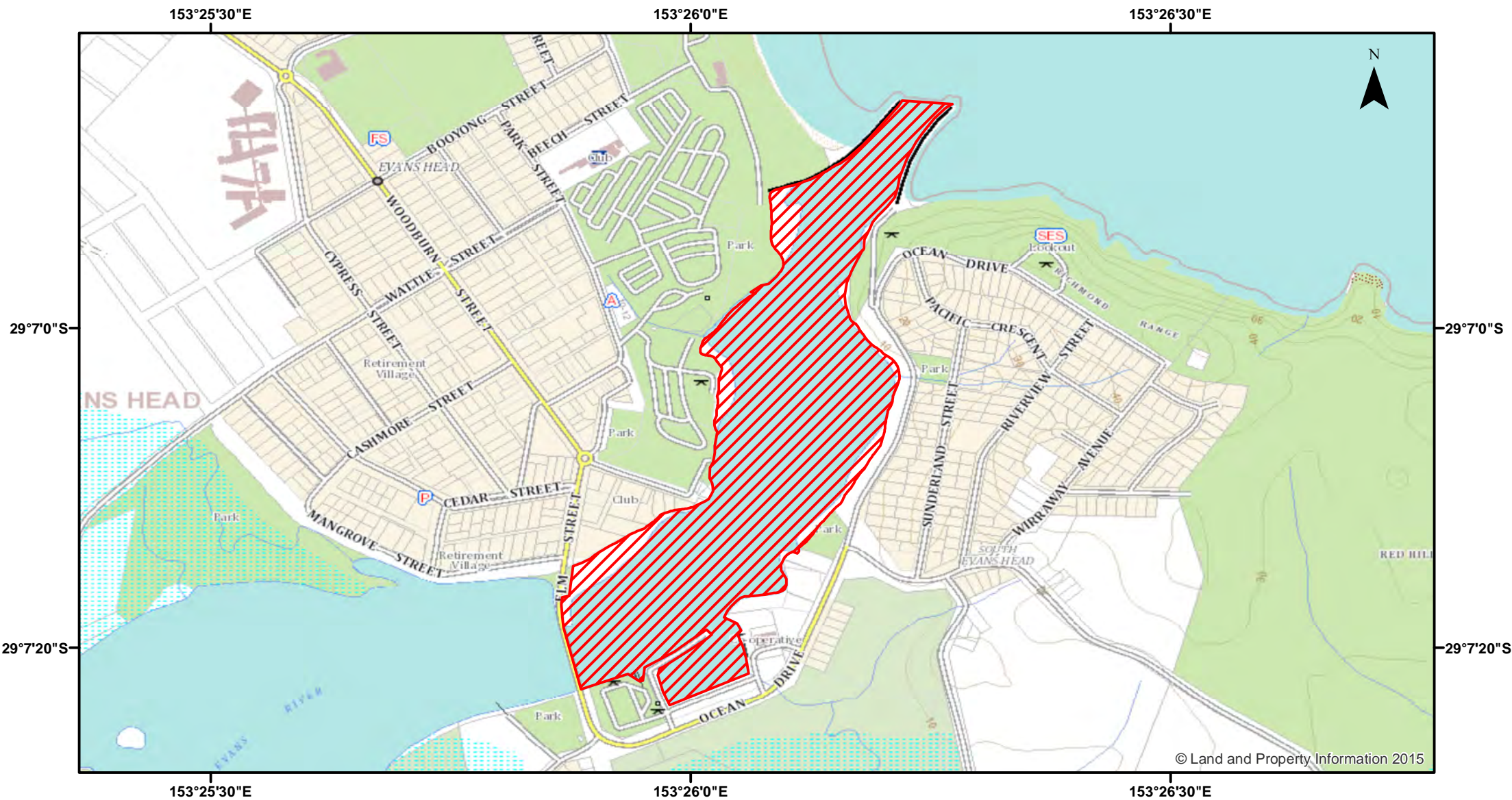


Lobster - Evans River Entrance

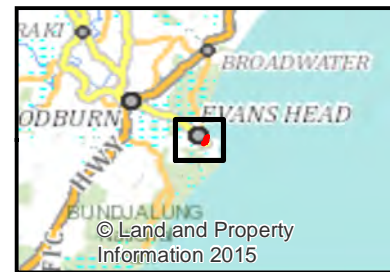
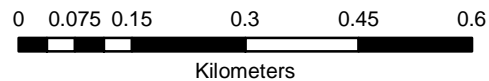


Closure

NSW DPI 20 December 2017
Coordinates are shown in WGS84

Closed Waters
The waters of Evans River including its creeks and tributaries, from a line drawn between the most northerly points of the eastern and western breakwaters at the entrance to Evans River, upstream to the Elm Street road bridge.

Notice to Map Users
Additional closures may apply. Primary Industries and its employees disclaim all liability for any actions or consequences arising from the use of this information. This map is not to be used for navigational purposes as it is indicative only and not guaranteed to be free of error or omission.



© Land and Property Information 2015

© Land and Property Information 2015