

Hawkesbury River (Broken Bay) and Brisbane Water - Nets and Traps

151°15'0"E

151°20'0"E

151°25'0"E

33°24'0"S

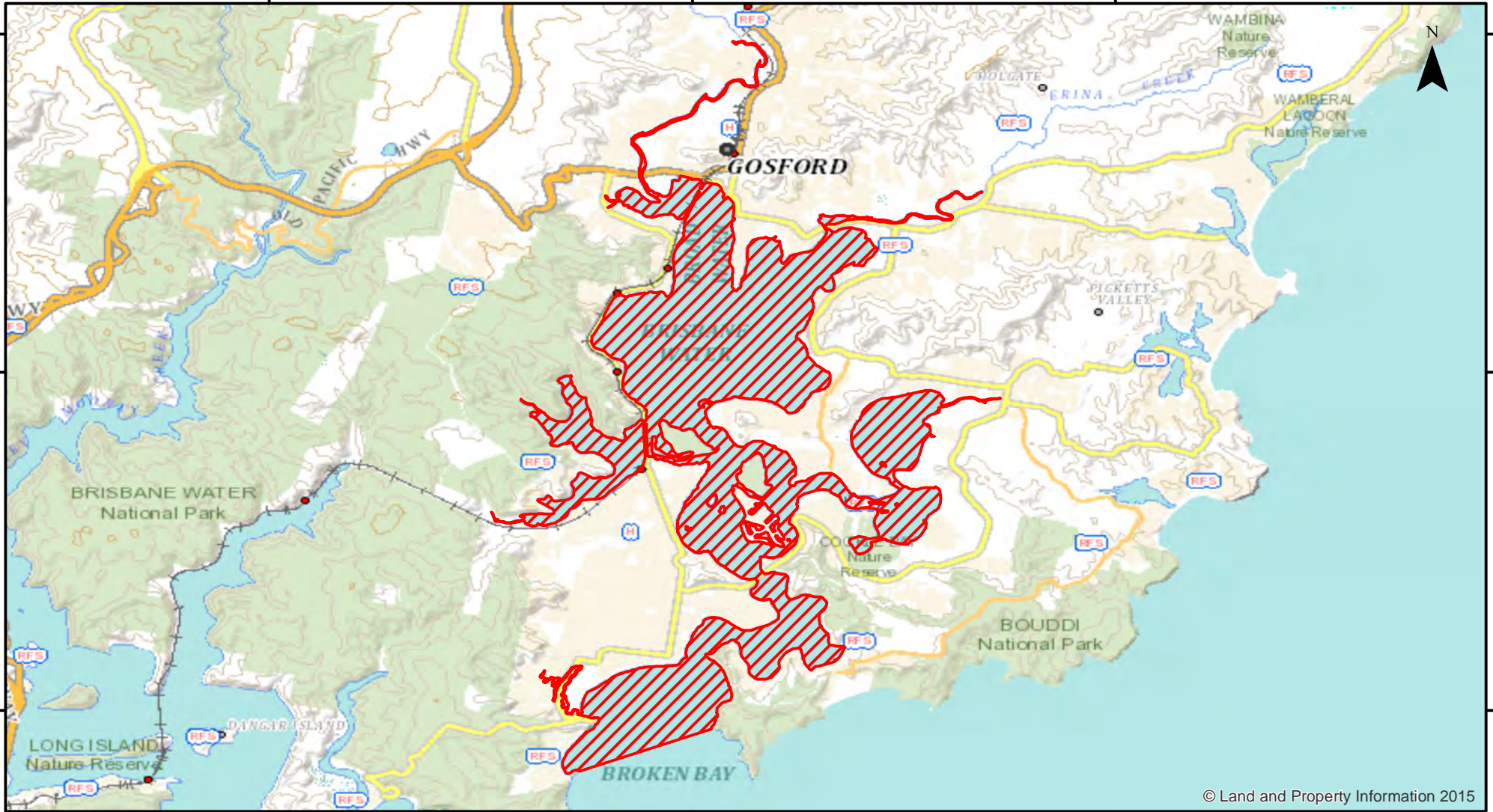
33°24'0"S

33°28'0"S

33°28'0"S

33°32'0"S

33°32'0"S



© Land and Property Information 2015

151°15'0"E

151°20'0"E

151°25'0"E



Closure

NSW DPI 25 May 2018

Coordinates are shown in WGS84

Notice to Map Users
Additional closures may apply. Primary Industries and its employees disclaim all liability for any actions or consequences arising from the use of this information. This map is not to be used for navigational purposes as it is indicative only and not guaranteed to be free of error or omission.

Closed Waters
The whole of the waters of that part of Brisbane Water/Broken Bay and its tributaries, north of a line drawn westerly from the western extremity of Little Box Head to the eastern extremity of Green Point.

Prohibited Method
Net or Trap, other than a landing net, a dip or scoop net (prawns), a bait trap or a lobster trap.

0 1 2 4 6 8



Kilometers



© Land and Property Information 2015