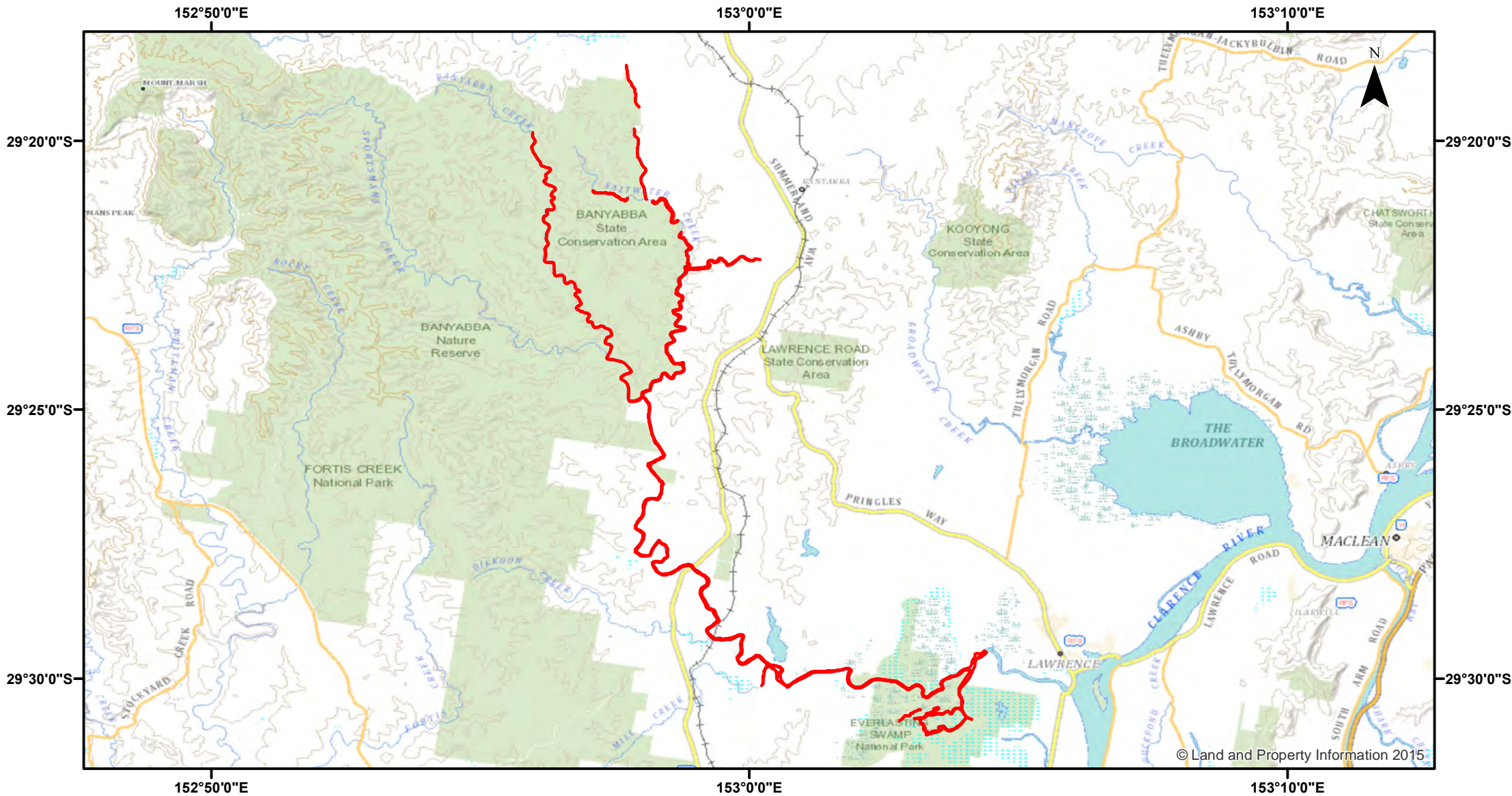


Estuary Prawn Trawl - Sportsman's Creek



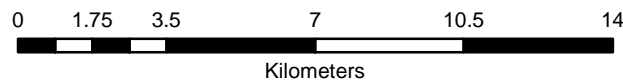
Closure

NSW DPI 19 December 2017

Coordinates are shown in WGS84

Notice to Map Users
Additional closures may apply. Primary Industries and its employees disclaim all liability for any actions or consequences arising from the use of this information. This map is not to be used for navigational purposes as it is indicative only and not guaranteed to be free of error or omission.

Closed Waters
The whole of the waters of Sportsman's Creek together with its creeks, tributaries and inlets from the weir above Lawrence upstream to its source.



© Land and Property Information 2015