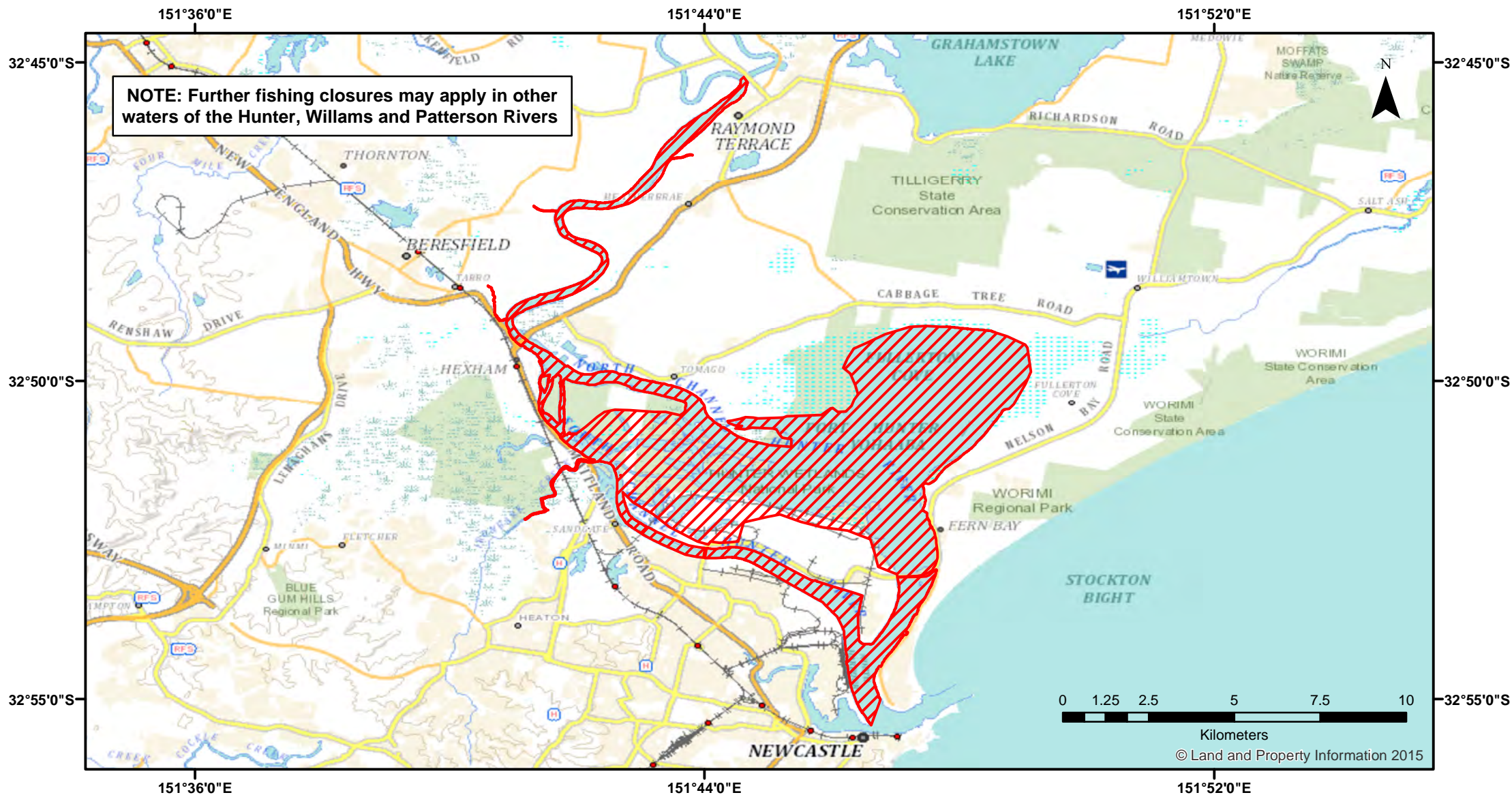


Hunter River - Prawn Nets



Closure

NSW DPI 2 May 2018

Coordinates are shown in WGS84

Notice to Map Users

Additional closures may apply. Primary Industries and its employees disclaim all liability for any actions or consequences arising from the use of this information. This map is not to be used for navigational purposes as it is indicative only and not guaranteed to be free of error or omission.

Closed Waters

The whole of the waters of Hunter River and its tributaries, from a line drawn southwesterly from the boat ramp adjacent to Punt Road, Stockton to the eastern extremity of the State Dockyard (Dyke Point) upstream to its junction with Williams River.

Prohibited Method

A Hand-Hauled Prawn Net or a Push or Scissors Net (prawns).

Closed Period

June to October (inclusive) in each year.

