

Lake Maquarie - Lake Petite

151°31'50"E

151°32'0"E

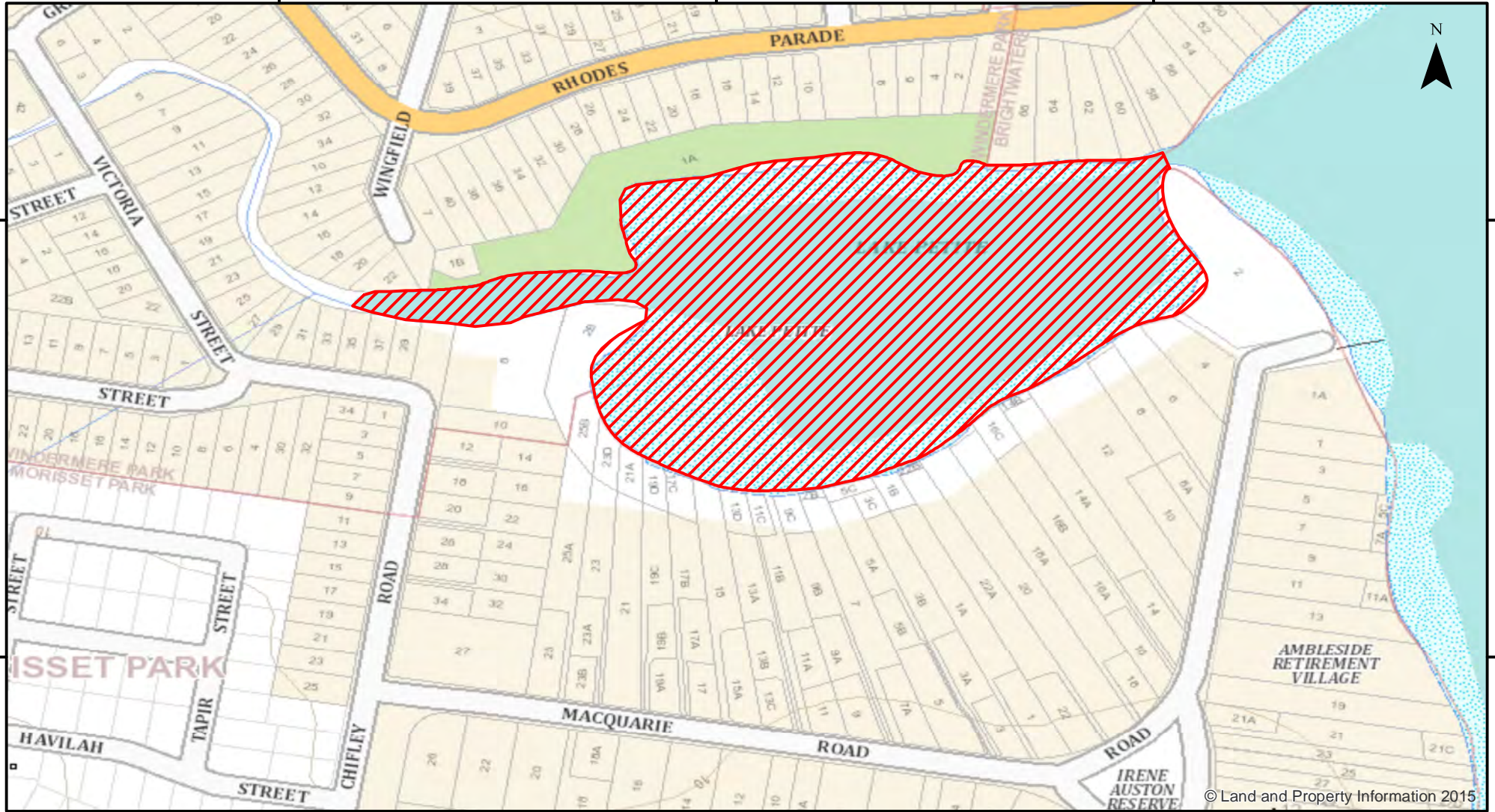
151°32'10"E

33°7'0"S

33°7'0"S

33°7'10"S

33°7'10"S



© Land and Property Information 2015

151°31'50"E

151°32'0"E

151°32'10"E



Closure

NSW DPI 20 April 2018
Coordinates are shown in WGS84

Notice to Map Users
Additional closures may apply. Primary Industries and its employees disclaim all liability for any actions or consequences arising from the use of this information. This map is not to be used for navigational purposes as it is indicative only and not guaranteed to be free of error or omission.

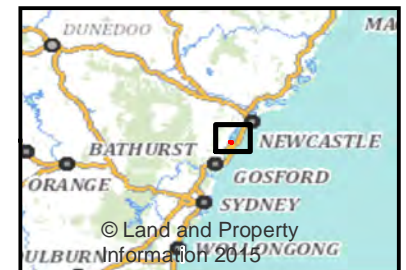
Closed Waters
The whole of the waters of Lake Petite upstream of its confluence with Bardens Bay.

Prohibited Method
A Hoop or Lift net.

0 0.0375 0.075 0.15 0.225 0.3



Kilometers



© Land and Property Information 2015