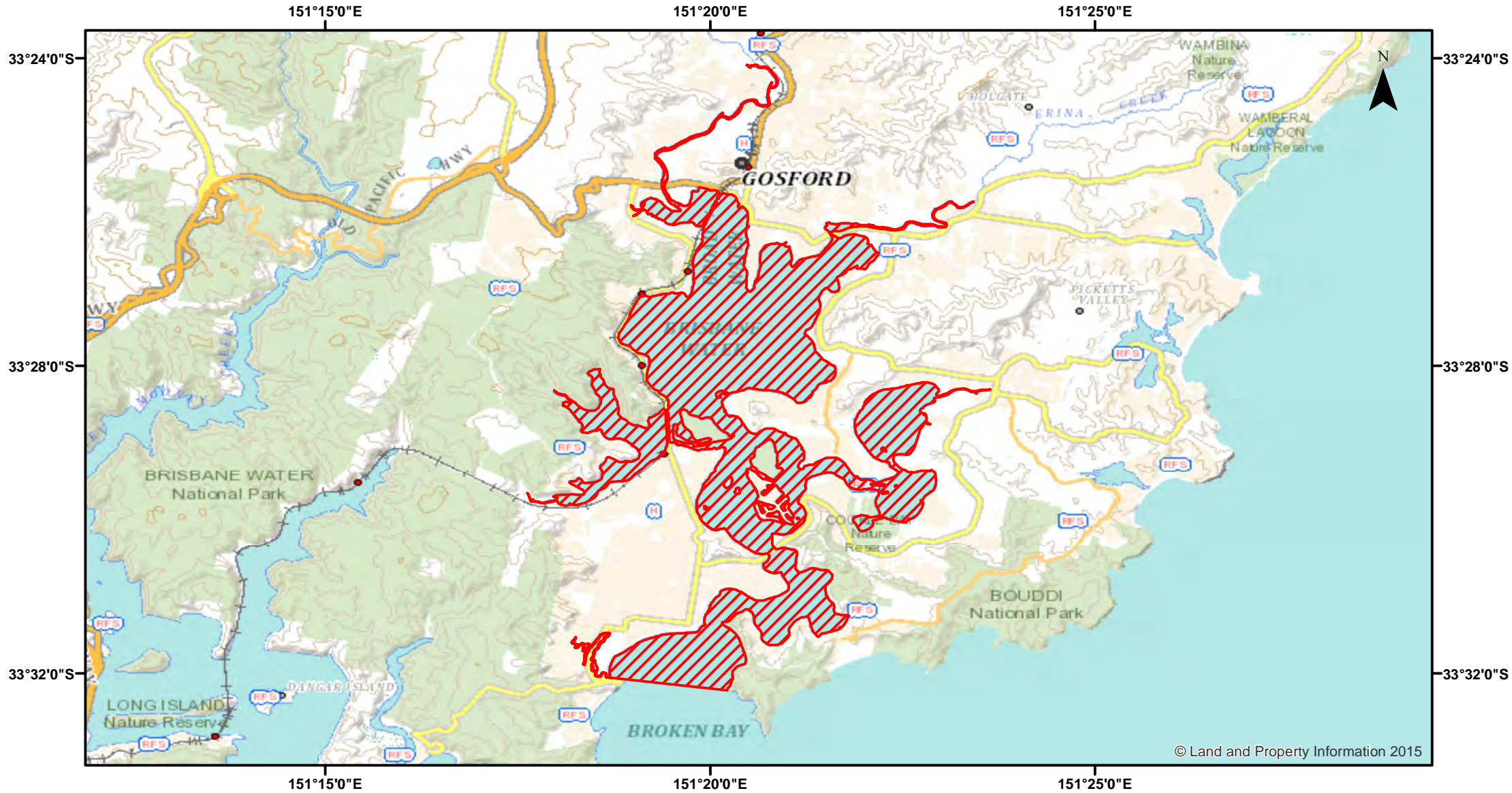


Hawkesbury River (Broken Bay Entrance) and Brisbane Water - Lobster traps



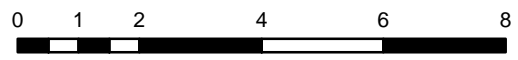
Closure

NSW DPI 25 May 2018
Coordinates are shown in WGS84

Notice to Map Users
Additional closures may apply. Primary Industries and its employees disclaim all liability for any actions or consequences arising from the use of this information. This map is not to be used for navigational purposes as it is indicative only and not guaranteed to be free of error or omission.

Closed Waters
The whole of the waters of that part of Brisbane Water/Broken Bay north of a line drawn westerly from the western extremity of Little Box Head and the northernmost Point of Mount Ettalong.

Prohibited Method
Lobster trap.



Kilometers

