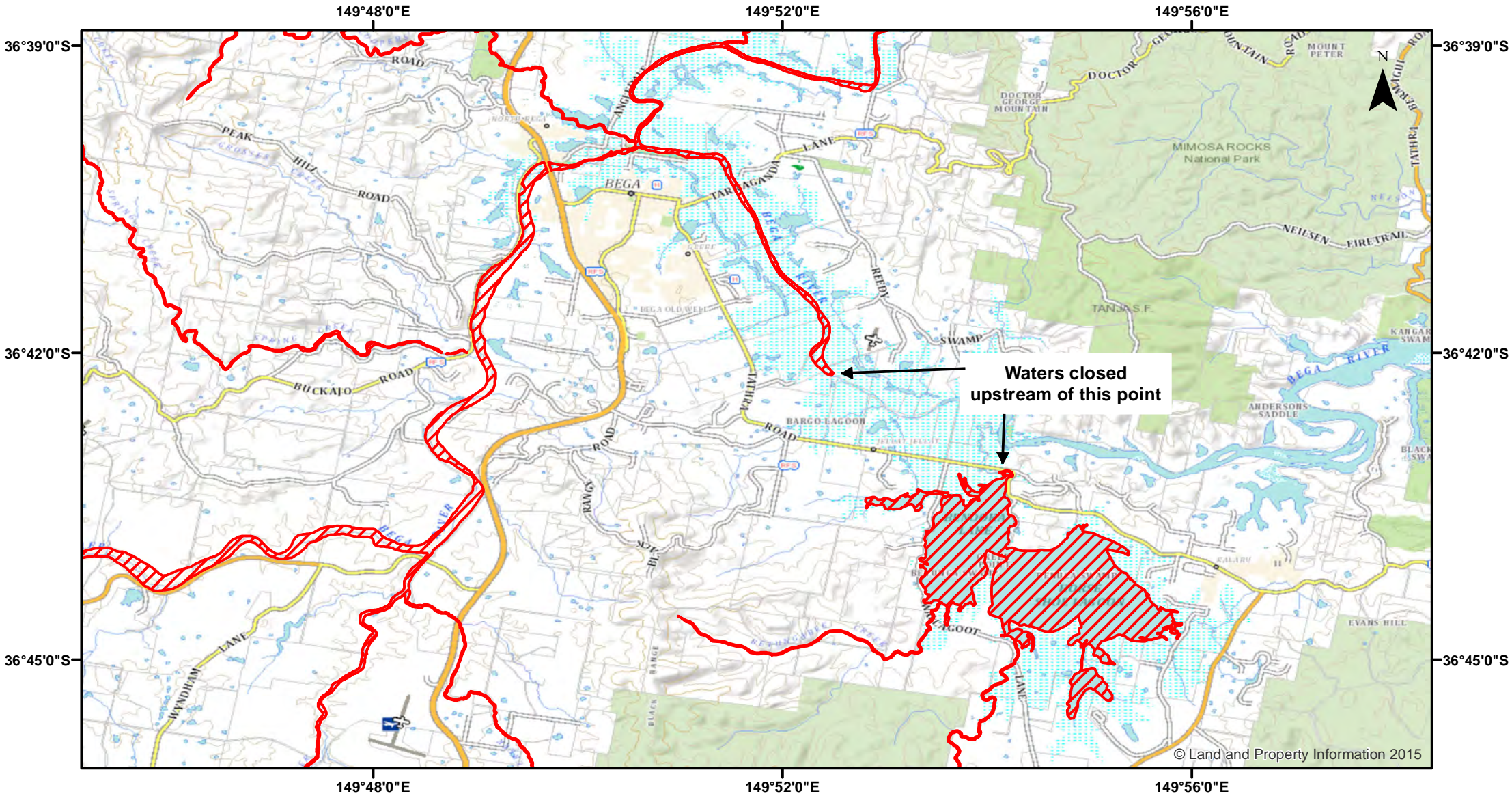


# Bega River (Upper Reaches) - Nets



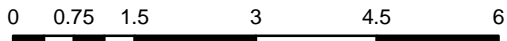
Closure

NSW DPI 31 July 2018  
Coordinates are shown in WGS84

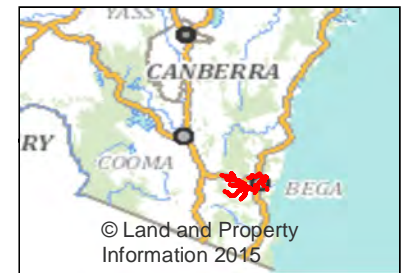
Notice to Map Users  
Additional closures may apply. Primary Industries and its employees disclaim all liability for any actions or consequences arising from the use of this information. This map is not to be used for navigational purposes as it is indicative only and not guaranteed to be free of error or omission.

**Closed Waters**  
The non-tidal waters of the Bega River and its tributaries upstream from the junction with Bargo Lagoon Creek to its source, including Bargo Lagoon and Bargo Lagoon Creek, and the whole of the non tidal waters of Jellat Jellat Creek and its tributaries upstream from the floodgate located approximately 450 metres above Russels Bridge crossing to its source.

**Prohibited Method**  
Nets, other than a landing net



Kilometers



© Land and Property Information 2015