



Biomass for Bioenergy

Bioenergy Crop Trial

Glen Innes Agricultural Institute

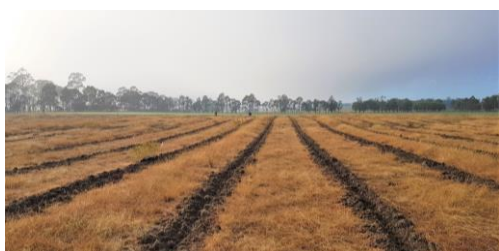
The **Glen Innes** crop trial consists of 7 replicates with 7 species per replicate, plus a number of filler species, planted across 3.4 ha of grey-black loamy clay soil. There are 100 trees per plot. It was planted in March/April 2020. The 2019 monthly rainfall for this area preceding planting was well below average, but the month of February was above average and provided ideal conditions for planting. Rainfall in the months after planting were good.

5	8a	9	8b	1
3	12	8	18	17
12	3	1	5	8
7	9	19	8	12
9	1	7	3	5
8	5	3	7	9
1	12	20	18	19
12	3	8	5	7
7	20	17	1	9
		8	7	1
8	9	3	12	5
12	5	9	1	3

Plot layout



Species	Common name	Code
<i>Eucalyptus acaciiformis</i>	Wattle-leaved peppermint	17
<i>Eucalyptus benthamii</i>	Camden white gum	1
<i>Eucalyptus castrensis</i>	Singleton mallee	3
<i>Eucalyptus infera</i>	Durikai mallee	7
<i>Eucalyptus perriniana</i>	Spinning gum	18
<i>Eucalyptus polybractea</i>	Blue-leaved mallee	9
<i>Eucalyptus occidentalis</i>	Swamp yate	8
<i>Eucalyptus stellulata</i>	Black sallee	19
<i>Eucalyptus viminalis</i>	Ribbon gum	20
<i>Eucalyptus viridis</i>	Green mallee	12
<i>Acacia dealbata</i>	Silver wattle	5



E. perriniana



A. dealbata



E. infera

Timeline of events	2019		2020				2021		2022		2023	
NB: will be updated as required	Sep	//	Feb	Mar	//	Sep	//	Mar	//	Mar	//	Mar
Ripping	█											
Shaping rip lines			█									
Non chemical weed control												
Chemical weed control			█									
Planting				█								
Irrigation				█								
6 months - measurements						█						
12 months - measurements								█				
24 months - measurements									█			
36 months - harvest crops												█