

Trout waters recreational fishing guide (Southern)

October 2014 Primefact 1037 Second edition
Recreational and Indigenous Fisheries Unit

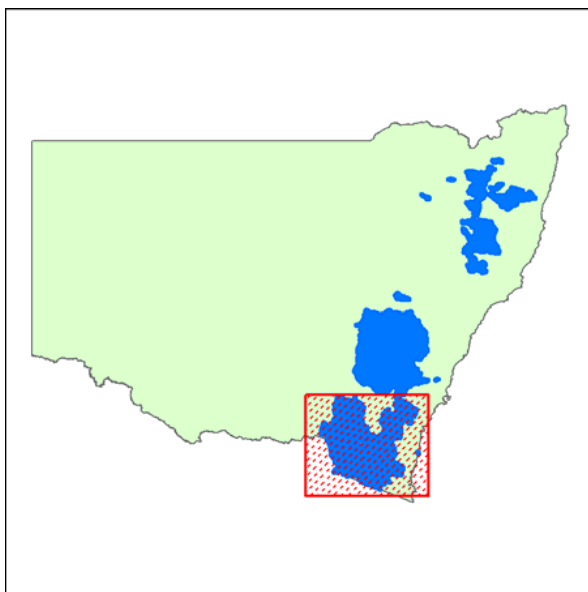
Introduction

Our State's fisheries are a community-owned resource. We all have a responsibility to protect and safeguard this natural asset for present and future generations.

Fishing regulations are in place to protect and conserve our fish stocks and aquatic habitats to ensure that fishing activities remain sustainable.

The Snowy catchment provides many fishing opportunities for a variety of enthusiasts. This guide will give you an idea of the fishing on offer and the closures and restrictions that apply across the Snowy Mountains region from Tumut in the west, Bombala in the east, Crookwell in the north and Khancoban in the south.

Figure 1. The Snowy Mountains region.



The Snowy region offers excellent lake, river and boat fishing opportunities and anglers have the chance of catching a wide variety of trout species including Rainbow Trout, Brown Trout, Brook Trout and Atlantic Salmon.

NSW DPI Fisheries Officers regularly patrol waterways and impoundments ensuring compliance with NSW fishing regulations and distributing freshwater fishing guides and sticky fish measuring rulers.

Fishcare Volunteers can also be found at boat ramps and on the water in dedicated Fishcare vessels, advising anglers about responsible fishing practices and distributing fisheries advisory information.

Information on bag and size limits, fishing closures and legal fishing gear can also be obtained free of charge from the NSW DPI website www.dpi.nsw.gov.au/fisheries, or by visiting your local NSW DPI fisheries office.

To report illegal fishing activity, call your local fisheries office or the Fishers Watch Phonenumber on **1800 043 536**. All calls will be treated as confidential and you can remain anonymous.

Recreational Fishing Fee

When fishing in NSW waters, both freshwater and saltwater, you are required by law to pay the NSW Recreational Fishing Fee and carry a receipt showing the payment of the fee. This applies when line fishing, bowfishing, trapping, netting or when undertaking bait or invertebrate collection or when in possession of fishing gear in, on or adjacent to waters.

All money raised by the NSW Recreational Fishing Fee is spent on improving recreational fishing in NSW. Some projects include:

- Angler facilities such as fish cleaning tables and fishing platforms;
- Stocking of freshwater fish in dams and rivers;
- Essential research on popular recreational fish species;
- Enhancing compliance with fishing rules;
- Restoring important fish habitat;
- Research stocking of mulloway and prawns in estuaries;
- The installation of fish aggregating devices (FADs) to enhance fishing opportunities for Mahi Mahi (Dolphinfish) or even Tuna and Marlin;
- Creation of recreational fishing havens;
- Angler education and advisory programs such as the Fishcare Volunteer program, fishing workshops, Get Hooked..It's Fun to Fish and fishing guides;
- Building artificial reefs in offshore areas such as Sydney Reef and Shoalhaven River and in inshore areas such as Lake Macquarie, Botany Bay, St Georges Basin, Lake Conjola and Merimbula Lake

You can pay the NSW Recreational Fishing Fee from hundreds of agents throughout NSW such as over the counter at most fishing tackle shops. You can also pay the fee at some caravan parks, service stations, many Kmart stores, online at www.licence.nsw.gov.au or by calling **1300 369 365**.

If you pay for a one year or three year period online, over the phone or at a Touch agent or if you renew your licence using your renewal letter, you will receive a plastic receipt in the post. For all other payment methods you will receive a paper receipt.

Some exemptions apply to paying the fishing fee, including people under the age of 18 and holders of pensioner concession cards. For further information on exemptions visit the NSW DPI website or call 1300 550 474.

You may not need to pay the NSW Recreational Fishing Fee if you are fishing on a charter boat under the supervision of a fishing guide. Please check with the charter operator, or guide, before you go fishing. If they do not hold a Recreational Fishing Fee Exemption Certificate you will need to pay the NSW Recreational Fishing Fee.

Trout and salmon fishing rules

General trout streams

The following waters are general trout streams and are closed to the taking of all species of fish by any method, from the Tuesday after the June (Queen's Birthday) long weekend until midnight on the last Friday before the start of the October (Labour Day) long weekend (inclusive) in each year.

The following methods are permitted during the fishing season:

- a) one attended rod and line with not more than 2 hooks attached and with not more than 3 treble hooks, or 3 double hooks, attached to any lure; and
- b) a landing net used as an ancillary for retrieval of fish lawfully taken. Bait fishing is permitted.

When taking Atlantic Salmon, Brook Trout, Brown Trout and Rainbow Trout in general trout streams, the maximum quantity that a person may take on any one day is 5 and the maximum quantity that a person may have in their possession is 10, consisting of any single species or a combination of species.

Bemboka River. (*Far South Coast district*). The following waters are general trout waters: the whole of the waters of Bemboka River, its creeks and tributaries upstream to its junction with, and including, Tantawangalo Creek.

Goodradigbee River. (*South West Slopes district*). The following waters are general trout waters: the whole of the waters of the Goodradigbee River, its creeks and tributaries upstream from where it enters the backed-up waters of Burrinjuck Dam.

Guinecor Creek. (*South West Slopes district*). The following waters are general trout waters: the whole of the waters of Guinecor Creek and its tributaries upstream from its junction with, but not including, the Wollondilly River.

Ingeegoodbee River. (*Monaro district*). The following waters are general trout waters: the whole of the waters of the Ingeegoodbee River, its creeks and tributaries upstream from the Victorian border.

Lachlan River. (*South West Slopes and Central Tablelands districts*). The following waters are general trout waters: the whole of the waters of the Lachlan River, its creeks and tributaries upstream from the Cowra–Young road bridge.

Macphersons Swamp Creek. (*South West Slopes district*). The following waters are general trout waters: the whole of the waters of the

Macphersons Creek and tributaries upstream from where it enters the backed-up waters of Burrinjuck Dam.

Molonglo River. (*South West Slopes district*).

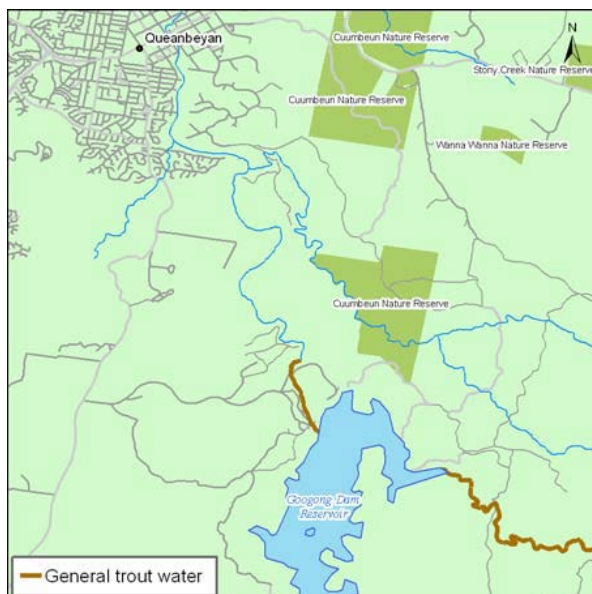
The following waters are general trout waters: the whole of the waters of the Molonglo River, its creeks and tributaries upstream from the railway bridge at Burbong.

Murray River. (*Monaro and Hume districts*). The following waters are general trout waters: the whole of the waters of the Murray River, its creeks and tributaries upstream from the road bridge at Tintaldra.

Murrumbidgee River. (*South West Slopes and Monaro districts*). The following waters are general trout waters: the whole of the waters of the Murrumbidgee River, its creeks and tributaries upstream from its junction with, and including, the Bredbo River

Queanbeyan River (Figure 2). (*South West Slopes district*). The following waters are general trout waters: the whole of the waters of the Queanbeyan River, its creeks and tributaries upstream of the fence boundary of the Googong Dam Reservoir (about 1 kilometre downstream of the wall of Googong Dam).

Figure 2. Queanbeyan River



Shoalhaven River. (*South West Slopes and Monaro districts*). The following waters are general trout waters: the whole of the waters of the Shoalhaven River, its creeks and tributaries upstream from its junction with, and including, the Mongarlowe River.

Snowy River. (*Monaro district*). The following waters are general trout waters: the whole of the

waters of the Snowy River, its creeks and tributaries upstream of the Victorian border.

Tumut River. (*South West Slopes and Monaro districts*). The following waters are general trout waters: the whole of the waters of the Tumut River, its creeks and tributaries upstream from its junction with but not including, the Murrumbidgee River.

Tuross River. (*Monaro district*). The following waters are general trout waters: the whole of the waters of the Tuross River, its creeks and tributaries upstream from the Tuross Falls.

Wollondilly River. (*South West Slopes district*). The following waters are general trout waters: the whole of the waters of the Wollondilly River, its creeks and tributaries upstream from its junction with, and including, the Tarlo River

Artificial fly and lure trout streams

The following waters are artificial fly and lure trout streams and are closed to the taking of all species of fish by any method, from the Tuesday after the June (Queen's Birthday) long weekend until midnight on the last Friday before the start of the October (Labour Day) long weekend (inclusive) in each year.

The following methods are permitted during the fishing season:

- one attended rod and line with not more than 2 hooks attached, artificial flies and lures only and with not more than 3 treble hooks, or 3 double hooks, attached to any lure; and
- a landing net used as an ancillary for retrieval of fish lawfully taken. Bait fishing is not permitted.

Note: 'artificial flies or lures' does not include the use of 'powerbait' or any other similar artificial or manufactured bait product.

When taking Atlantic Salmon, Brook Trout, Brown Trout and Rainbow Trout, the maximum quantity that a person may take on any one day is 2 and the maximum quantity that a person may have in their possession is 4, consisting of any single species or a combination of species.

Bobundara Creek. (*Monaro district*). The following waters are artificial fly and lure waters: the whole of the waters of Bobundara Creek and its tributaries upstream from its junction with, but not including, the Snowy River.

Eucumbene River (Figure 3). (*Monaro district*). The following waters are artificial fly and lure waters: the whole of the waters of the Eucumbene River, its creeks and tributaries upstream from the Dam wall of Lake Eucumbene and including Providence Portal.

Figure 3. Eucumbene River



Flea Creek. (*South West Slopes district*). The following waters are artificial fly and lure waters: the whole of the waters of Flea Creek and its tributaries including Tumbledown Creek and its tributaries upstream of the junction with the Goodradigbee River.

Khancoban Creek (Figure 4). (*Monaro district*). The following waters are artificial fly and lure waters: the whole of the waters of Khancoban Creek, together with all of its tributaries, from its confluence with the backed-up waters of Khancoban Pondage upstream to its source and including that part of Broken Back Creek from the wall of Murray 2 Pondage downstream to its confluence with the waters of Khancoban Creek.

Kybeyan River. (*Monaro district*). The following waters are artificial fly and lure waters: the whole of the waters of the Kybeyan River, its creeks and tributaries upstream from its junction with, but not including, the Numeralla River.

Maclaughlin River. (*Monaro district*). The following waters are artificial fly and lure waters: the whole of the waters of the Maclaughlin River, its creeks and tributaries upstream from its junction with, but not including, the Snowy River.

Mowamba River. (*Monaro district*). The following waters are artificial fly and lure waters: the whole of the waters of the Mowamba River (or Moonbah River), its Creeks and tributaries upstream from its junction with, but not including, the Snowy River.

Swampy Plain River (Figure 4). (*Monaro district*). The following waters are artificial fly and lure waters: the whole of the waters of the Swampy Plain River, its creeks and tributaries downstream of the southern (upstream) boundary

of Khancoban Station and upstream from its junction with, but not including, the Murray River.

Thredbo River (Figure 5). (*Monaro district*). The following waters are artificial fly and lure waters: the whole of the waters of the Thredbo River (or Crackenback River), its creeks and tributaries upstream from where it enters the backed-up waters of Lake Jindabyne, but not including that portion of the Thredbo River from the upstream extremity of the public reserve known as 'Paddy's Corner', upstream for a distance of 2.4 kilometres (being those waters immediately adjacent to the Gaden Trout Hatchery or the waters of Sawpit Creek).

Artificial fly and lure trout dams

The following dam is an artificial fly and lure trout dam which is open to fishing all year round. Bait fishing is not permitted.

When taking Atlantic Salmon, Brook Trout, Brown Trout and Rainbow Trout, the maximum quantity that a person may take on any one day is 2 and the maximum quantity that a person may have in their possession is 4, consisting of any single species or a combination of species.

Black Lake. (*Far South Coast District*). The following waters are artificial fly and lure waters: the whole of the waters of Black Lake.

| Dam | Town |
|------------|------------|
| Black Lake | Bibbenluke |

Figure 4. Khancoban Creek and Swampy Plains River

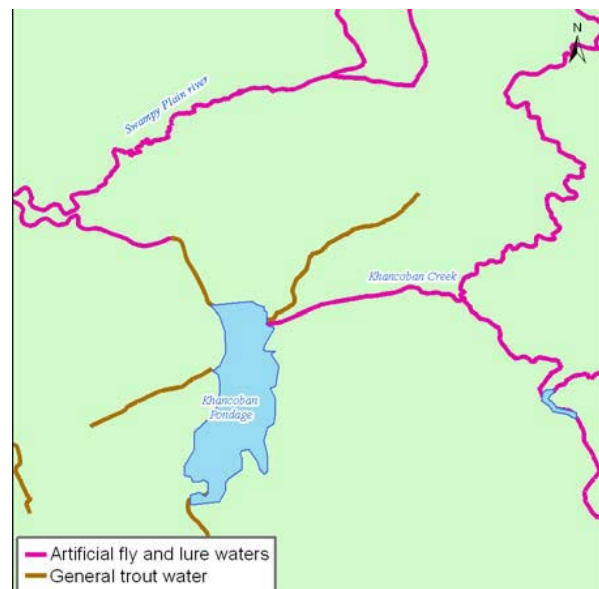


Figure 5. Thredbo River



Trout spawning streams

The following waters are trout spawning streams and are closed to the taking of all species of fish by any method, from Tuesday after the June (Queens Birthday) long weekend until midnight of the last Friday before the October (Labour Day) long weekend.

Open 1: As trout spawning streams: From 1 May morning until midnight Monday June long weekend.

Open 2: When otherwise classed as artificial fly & lure streams: From Saturday morning October long weekend until midnight 30 April.

The following methods are permitted during the fishing season:

- one attended rod and line with not more than 2 hooks attached, artificial flies and lures only and with not more than 3 treble hooks, or 3 double hooks, attached to any lure; and
- a landing net used as an ancillary for retrieval of fish lawfully taken. Bait fishing is not permitted.

When taking Atlantic Salmon, Brook Trout, Brown Trout and Rainbow Trout in trout spawning streams the maximum quantity that a person may take on any one day is 1 and the maximum quantity that a person may have in their possession is 2, consisting of any single species or a combination of species.

The legal length when taking Atlantic Salmon, Brook Trout, Brown Trout and Rainbow Trout in trout spawning streams is 50 cm.

Eucumbene River (Figure 3). (*Monaro district*). The following waters are trout spawning waters: the whole of the waters of the Eucumbene River

and its tributaries upstream of the dam wall and including the Providence Portal.

Thredbo River (Figure 5). (*Monaro district*). The following waters are trout spawning waters: the whole of the Thredbo River except for a signposted 2.4 km reach at Gaden Trout Hatchery.

Note: The signposted 2.4 km reach of the Thredbo River at Gaden Trout Hatchery is completely closed to fishing all year round.

General trout dams

The following waters are general trout dams. These waters are open to fishing all year round. When fishing in general trout dams, up to two attended rods each with a line may be used with not more than 2 hooks attached per line or up to 3 hooks attached per line, where those hooks are artificial flies or lures. An artificial fly or lure is considered to be a single hook. Bait fishing is permitted. A landing net may be used as an ancillary for retrieval of fish lawfully taken.

Note: The bag and size limits for general trout dams are the same as the bag and size limits for general trout streams

| Dam | Town |
|---------------------|-----------------|
| Captains Flat Dam | Queanbeyan |
| Coolumbooka Weir | Bombala |
| Diggers Creek Dam | Perisher Valley |
| Geehi Dam | Khancoban |
| Googong Dam | Queanbeyan |
| Guthega Lake | Jindabyne |
| Happy Jacks Pondage | Khancoban |
| Island Bend Dam | Jindabyne |
| Jounama Pondage | Talbingo |
| Khancoban Pondage | Khancoban |
| Lake Bathurst | Tarago |
| Lake Crackenback | Thredbo |
| Lake Eucumbene | Adaminaby |
| Lake Jindabyne | Jindabyne |
| Lake Williams | Nimmitabel |
| Marsden Weir | Goulburn |
| Murray 2 Pondage | Khancoban |
| Paddy's River Dam | Tumbarumba |
| Pejar Dam | Goulburn |
| Redground Dam | Crookwell |
| Rossi Weir | Goulburn |
| Talbingo Dam | Talbingo |
| Tantangara Dam | Adaminaby |
| Three Mile Dam | Kiandra |
| Tod Kill Park Dam | Crookwell |
| Tooma Dam | Khancoban |
| Tumut Ponds | Adaminaby |
| Tumut 2 Pondage | Khancoban |

General freshwater fishing rules

Permitted fishing gear and methods

Lines. Two attended lines are permitted in all non-tidal waters other than in some trout waters. Attended lines must be within 50 m, in your sight, and have no more than 2 hooks per line or up to 3 treble hooks attached to any lure per line other than in some trout waters. A lure is considered a single hook. Setlines are not permitted.

Traps and nets. You may use up to 5 yabby traps, 1 shrimp trap and 5 hoop (lift) nets, other than in trout waters, where use of traps and nets is prohibited (except when using up to 5 hoop nets in Googong Dam or Lakes Lyell, Wallace, Eucumbene or Jindabyne to take Yabbies).

Persons must not set traps or nets for longer than 24 hours without lifting those traps or nets. Fishers are encouraged to regularly check set fishing gear, to ensure that any unwanted catch is returned to the water safely, unharmed.

The use of yabby traps are not permitted in any waters east of the Newell Highway (except farm dams), the Murray River from the Newell Highway at Tocumwal downstream to the Echuca road bridge, the Edward River from the Murray River at Picnic Point downstream to Stevens Weir and the Murrumbidgee River from Narrandera to the Darlington Point road bridge.

See the freshwater recreational fishing guide for information on how to correctly identify nets and traps and their specifications and dimensions.

Bowfishing. A pilot program permitting bowfishing in some specific areas will be implemented in 2015 (see www.dpi.nsw.gov.au for more information).

Species restrictions

Freshwater Catfish – Eel Tailed. (*Tandanus tandanus*). May not be taken by any fishing method in western flowing rivers. May be taken from the backed up waters of listed western impoundments, eastern rivers and eastern dams. See the NSW Freshwater Recreational Fishing Guide for further details.

Silver Perch (*Bidyanus bidyanus*). May not be taken by any fishing method in any rivers. May be taken from the backed up waters of listed impoundments. See the NSW Freshwater Recreational Fishing Guide for further details.

Murray Cod (*Maccullochella peelii*). May not be taken from the whole of the inland waters of NSW. From 1 September to 30 November (inclusive) in each year (except Copeton and Blowering dams).

Murray Crayfish (*Euastacus armatus*). May not be taken in any waters at any time other than between June and August (inclusive) in the following specified waters:

- (a) Murrumbidgee River between the Hume Highway road bridge, Gundagai and 100 m upstream of the weir face at Berembred Weir near Ganmain and
- (b) Murray River from 130 m below Hume Weir near Albury to the Newell Highway road bridge, Tocumwal

Note: The specified waters include all tributaries, lakes, lagoons, dams, reservoirs, ponds, canals, channels or waterways of the main channels of the above rivers, except Old Man Creek, which is a tributary of the Murrumbidgee River.

Australian Bass and Estuary Perch. May not be taken in rivers, except rivers above impoundments from 1 May to 31 August (inclusive) in each year other than by catch and release fishing, where any fish caught must be returned to the water safely, unharmed.

Prohibited fishing methods.

It is illegal to use

- Setlines, spearguns, spears, poison or explosives or firearms to take fish, to use a gaff to take fish, to jag or foul hook fish, to use frogs, live finfish (including carp), live birds or live animals as bait, or any traps or nets not permitted for recreational use, or to sell your catch. It is illegal to keep prohibited size fish – they should be returned to the water immediately with as little harm as possible.
- Crayfish. It is illegal to remove heads, tails and claws from crayfish or possess tails and or claws when you are in, on or adjacent to the water. This rule does not apply if the crayfish are being prepared for immediate consumption, are being prepared for immediate use as bait, if the crayfish are being cleaned at a fish cleaning facility or at a boat ramp. It is also illegal to keep crayfish with eggs or to remove those eggs.
- Trout and Salmon. It is illegal to use a setline, hand held lines, traps, nets, a light, your hand or a gaff to take trout or salmon in trout waters, unless otherwise stated. The use of salmon roe or products containing them is also prohibited.
- Chemical or explosive devices. You cannot use any chemical or explosive devices to take or assist to take fish.

- Fish filleting. You must not alter the length of a fish which is subject to a minimum or maximum size limit whilst you are in, on or adjacent to any waters in any manner other than by gutting, gilling and scaling. You cannot remove the head or tail. This rule does not apply if the fish are being prepared for immediate consumption, are being prepared for immediate use as bait, if the fish are being cleaned at a fish cleaning facility or a fish cleaning table at a boat ramp, or for fish that do not have a legal length.

Other freshwater fishing rules

- Lakes Hume and Mulwala. NSW fishing regulations apply to all of Lake Mulwala and Victorian regulations apply to all of Lake Hume.
- Commercial fishing gear. Leave all commercial fishing gear in place and do not disturb commercial fishers going about their lawful business. Penalties up to \$5,500 can apply.

Fishing safely

Fishing is fun, but remember to take care and exercise caution. Remember these basic safety tips.

- Observe first, fish later. Always check weather and water conditions before you start fishing. Make sure you are aware of local weather. Listen to weather forecasts or call the weather information line on 1900 937 107. Be aware that conditions may change dramatically in a short period of time.
- Never fish alone and always inform others of your fishing plans. Let friends or family know where you are going and when you will be back.
- Care for your own safety and never take undue risks when fishing, even when fighting fish. Never enter the water to retrieve lost tackle or snagged fish. If the location looks dangerous, don't fish there.
- Wear a lifejacket or buoyancy vest when boat fishing or when fishing in hazardous locations such as those located near areas of fast moving water. Always wear appropriate non-slip shoes. Cleats, sandals and sandshoes with non slip soles suit different surfaces. Carry ropes and torches as an additional precaution.
- If someone falls into the water, look for something that floats and throw it to the person in the water. Alert emergency

services by dialling 112 from a mobile phone or 000 from a landline.

- When boat fishing, wear light clothing. Light clothing such as shorts and a spray jacket will let you swim easily if you fall overboard. Jumpers may be heavy and difficult to take off.
- Ask for advice from locals who know the area – they can advise you of good fishing locations and areas to be cautious around.

Wader safety

Take extra care when wearing waders. NSW Maritime Authority recommends that waders should not be used in boats in case of capsizing or swamping.

Basic wader safety tips include the following.

- To restrict the amount of water that can enter waders, fasten a belt around your waist. This must be as firm as possible but always comfortable. The belt will also trap air inside and provide some buoyancy but caution is needed as you could end upside down if you fall into the water.
- If you fall into the water immediately assume a tuck position, then roll on to your back while keeping the knees tucked. Use your arms to balance.
- Do not try to swim but either tread water or float.
- If swept into a fast flowing stream always face downstream and go with the current feet first while working to a safe shore position.
- Always remember not to panic.

Responsible fishing

- Observe all bag and size limits as well as any other restrictions for the area you are fishing.
- Carefully release all undersize or unwanted fish and take only what is sufficient for your immediate needs.
- Take home any rubbish from the fishing spot, especially plastic bags, old line and fishing hooks.
- Take home any left-over bait or fish discards and ensure you clean away any residue.
- Use environmentally friendly tackle where possible.

Catch and release

Catch and release fishing has increased in popularity in recent years. Research has shown

that most fish survive using current catch and release fishing techniques. The following improved fishing practices are suggested to maximise fish survival.

- If a fish is deeply hooked, do not try to remove the hook – cut the line as close to the mouth as possible and release the fish. It is likely to survive if handled carefully.
- Use artificial lures or non-offset circle hooks when using bait to reduce deep hooking of fish.
- Barbless hooks can be used to make hook removal easier and minimise hook damage.
- Minimise the length of time the fish is out of the water. Ideally, unhook the fish while it is still in the water. Needle-nosed pliers or unhooking devices can greatly reduce the time spent unhooking a fish.
- Use fish-friendly landing nets with soft, knotless mesh.
- Avoid dropping the fish on hard or hot surfaces and do not hold the fish by the gills or eyes.
- Use wet hands or gloves to handle fish before release.
- If you are going to take photos of your fish before release, support your fish properly.

Penalties

Penalties apply to persons who take or possess fish (including invertebrates, shells, etc.) taken in contravention of fishing closures.

Further information

If you would like more information about fishing restrictions that apply to northern trout waterways and impoundments, please contact the relevant fisheries office.

Hume District (02) 6496 8200
 Monaro District (02) 6451 3402
 Far South Coast (02) 6496 8200
 South West Slopes (02) 6491 1404
 Central Tablelands (02) 6331 1428

For further information visit the NSW DPI
 Website www.dpi.nsw.gov.au/fisheries or call
 1300 550 474.

© State of New South Wales through the Department of Trade and Investment, Regional Infrastructure and Services 2014. You may copy, distribute and otherwise freely deal with this publication for any purpose, provided that you attribute the NSW Department of Primary Industries as the owner.

ISSN 1832-6668

Disclaimer: The information contained in this publication is based on knowledge and understanding at the time of writing (October 2014). However, because of advances in knowledge, users are reminded of the need to ensure that information upon which they rely is up to date and to check currency of the information with the appropriate officer of the Department of Primary Industries or the user's independent adviser.

Published by the NSW Department of Primary Industries.

Jobtrack 13140 TRIM V13/4065#21