

Download FisherMobile to Your iPad

This user guide will help you set up FisherMobile as an application shortcut icon added to your iPad Home Screen.

Before You Start

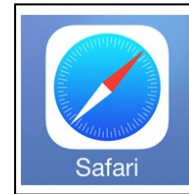
You will require:

- Internet connectivity

Step By Step Instructions with Device Screenshots

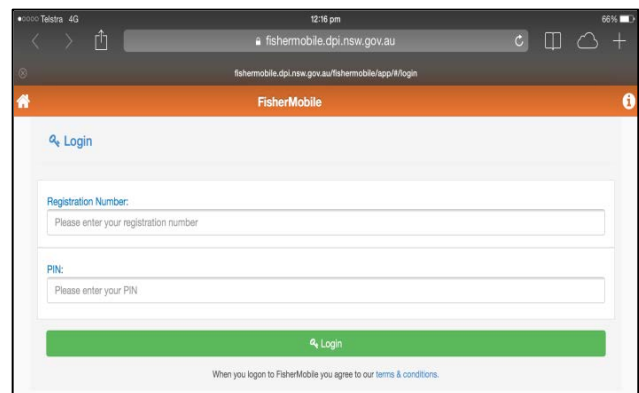
Step 1 – Locate FisherMobile

- Launch Safari on your iPad and navigate to the DPI NSW website for FishOnline, containing the FisherMobile Icon as displayed on the right.
- Tap the icon and this will launch the web page you want to 'pin' to your home screen.
- Alternatively you may [Download FisherMobile](#) by clicking this link



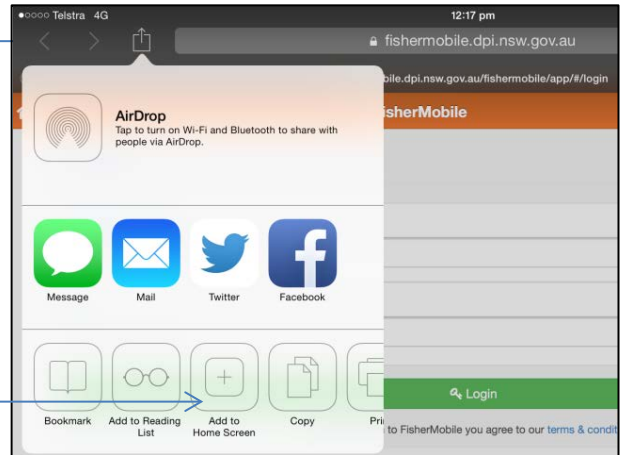
Step 2 – Load FisherMobile

- The Fisher Mobile Login Screen should have loaded on the browser.



Step 3 – Add to Home Screen

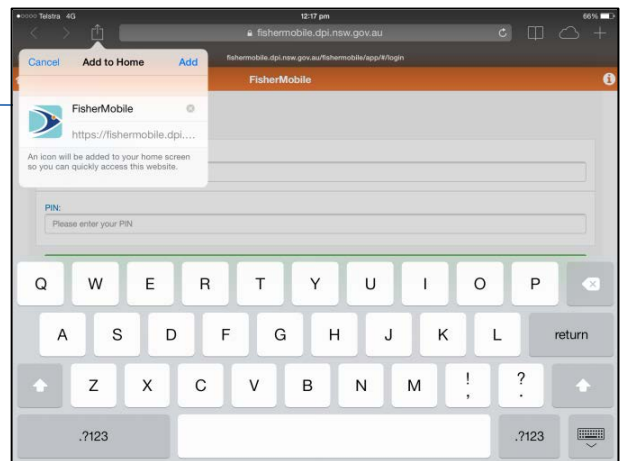
- Tap the icon at the top of screen. This will open the window seen to the left.



- Tap the 'Add to Home Screen' icon

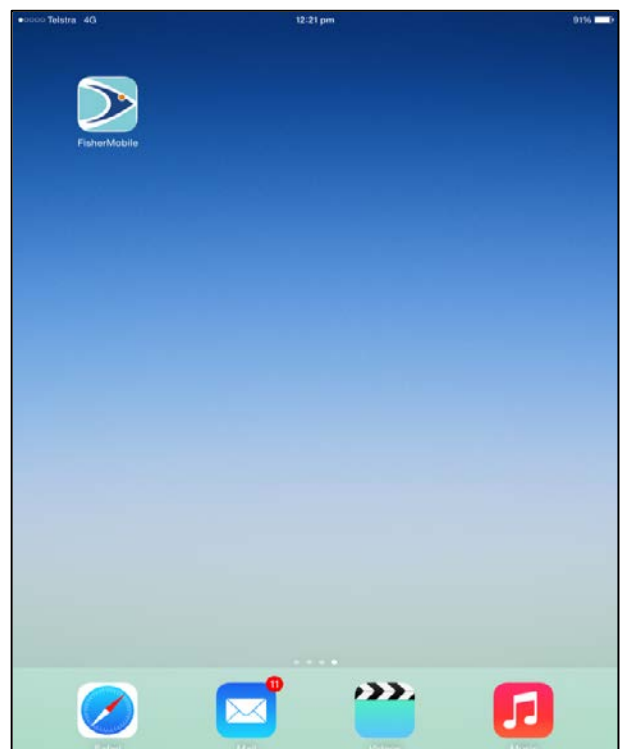
Step 4 – Add to Home Screen

- You may then enter a name for the Shortcut. We recommend using "FisherMobile".
- Tap 'Add' and the FisherMobile icon will then be added to your home screen.



Step 5 – Check Your Home Screen

- The icon will appear on your home screen like any other App shortcut or widget.
- You can position the icon on your Home Screen anywhere you like
- Tapping the icon loads the website as a "Web App".



For more information please contact:

FishOnline Support

Phone: 1300 720 662

Fax: (02) 4424 7449

Email: fishonline.support@dpi.nsw.gov.au

Post: FishOnline Support

Locked Bag 3020

Nowra NSW 2541

© State of New South Wales through the Department of Trade and Investment, Regional Infrastructure and Services, 2015. You may copy, distribute and otherwise freely deal with this publication for any purpose, provided that you attribute the NSW Department of Primary Industries as the owner.

Disclaimer: The information contained in this publication is based on knowledge and understanding at the time of writing (May 2015). However, because of advances in knowledge, users are reminded of the need to ensure that information upon which they rely is up to date and to check currency of the information with the appropriate officer of the Department of Primary Industries or the user's independent adviser.

Published by the Department of Primary Industries.

INT15/2544