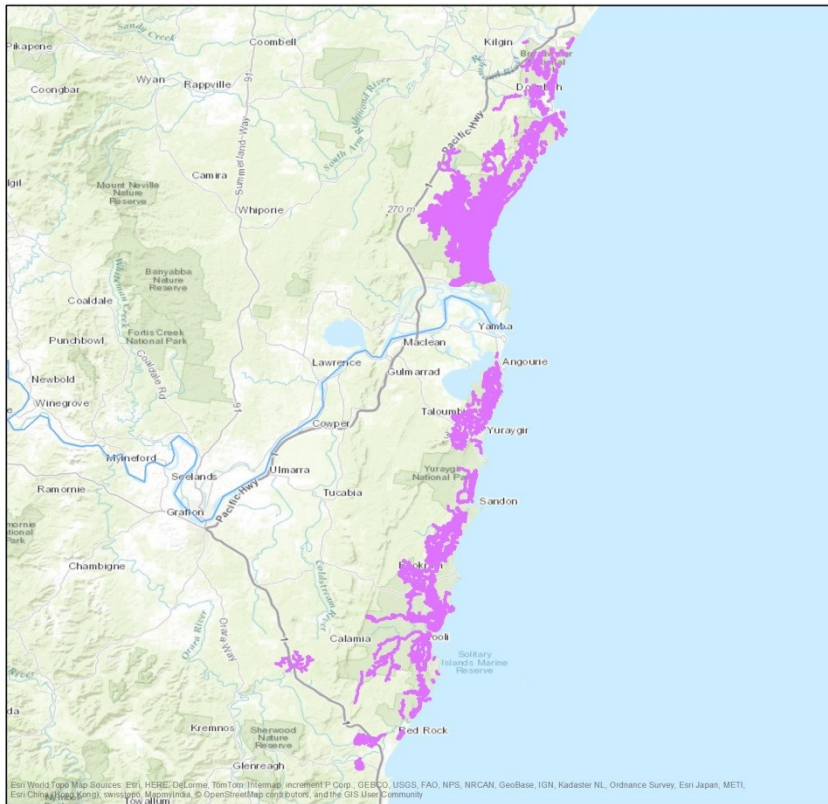


Dataset: Oxleyan Pygmy Perch Indicative Distribution in NSW



Indicative Distribution in NSW
Oxleyan Pygmy Perch



(*Nannoperca oxleyana*)



Indicative Distribution

Distribution based on survey records, predicted occurrence (MaxEnt 3.3.3) and expert opinion, 2017.



© State of New South Wales through the Department of Industry, Skills and Regional Development 2015. You may copy, distribute and otherwise freely deal with this publication for any purpose, provided that you attribute the NSW Department of Primary Industries as the owner. Disclaimer: The information contained in this publication is based on the best available knowledge and understanding at the time of production (2015). However, because of advances in knowledge, users are reminded of the need to ensure that information upon which they rely is up to date and to check currency of the information with the appropriate officer of the Department of Primary Industries or the user's independent adviser. Recognising that some of the information in this document is provided by third parties, the State of New South Wales, the author and the publisher take no responsibility for the accuracy, currency, reliability or correctness of any information included in the document provided by third parties. Fish image: G. Schimida.



Department of Primary Industries

Dataset/Product Description

Oxleyan pygmy perch (*Nannoperca oxleyana*) are a small freshwater fish endemic to the coastal region of eastern Australia, from northern NSW to south-eastern Queensland. They have specific habitat requirements and are patchily distributed within this range. They are an endangered species - <http://www.dpi.nsw.gov.au/fishing/species-protection/conservation/what-current/endangered-species/oxleyan-pygmy-perch/oxleyan-pygmy-perch>. The methods used to create the predicted current distribution of Oxleyan Pygmy Perch are as follows. As the species occur in wetlands, the method described fully in: NSW Department of Primary Industries (2015), NSW Fish Community Status 2015 – Final Report, did not map all potential habitat. In addition to this modelling, records and previous critical habitat mapping (2007) were used. Critical habitat stream lines were identified from the 2012 NSW Topographic Hydro Line. Wetland boundaries were delineated from SEPP (Dec 2016 version).

Dataset Uses

- The dataset has a number of primary functions including but not limited to;
- spatially representing the status of fish communities at river reach scale across NSW
 - providing additional support to strategic planning frameworks to ensure they effectively integrate biodiversity considerations

NSW Spatial Dataset Profile

	into planning and decision making processes
Current Status	The Oxleyan Pygmy Perch Distribution in NSW dataset was produced in 2017 as a modification to the NSW Fish Community Status 2015.
Standards & Specifications	ANZLIC Metadata Profile: An Australian/New Zealand Profile of AS/NZS ISO 19115:2005, Geographic information – Metadata
Access and Licensing	<p>The Oxleyan Pygmy Perch Distribution in NSW is authored by the Department of Industry, Skills and Regional Development is licensed under a Creative Commons Attribution-NonCommercial-NoDerivatives 4.0 International License.</p> <p>The Department of Industry, Skills and Regional Development asserts the right to be attributed as author of the Oxleyan Pygmy Perch Distribution in NSW in the following manner: © State of New South Wales through Department of Industry, Skills and Regional Development 2015.</p> <p>Any derived products which are created will be required to clearly mark the date that any extractions from the NSW Industry's Corporate Spatial Databases occurred.</p> <p>All Intellectual Property which is owned by NSW Industry should only be loaded on any external cloud platforms if NSW Industry's Intellectual Property (IP) remains unchanged, maintained and preserved.</p>
Metadata	See: NSW Department of Primary Industries (2016), Fish communities and threatened distributions of NSW – Final Report.
Updates	As required.
Custodian Agency & Contact	Threatened Species Unit Department of Primary Industries Email: fisheries.threatenedspecies@dpi.nsw.gov.au
Aggregator(s)	
Distributor(s)	Geospatial Consultant Department of Industry Ph: 02 4931 6492 Email: Adam.King@industry.nsw.gov.au
Additional Comments	