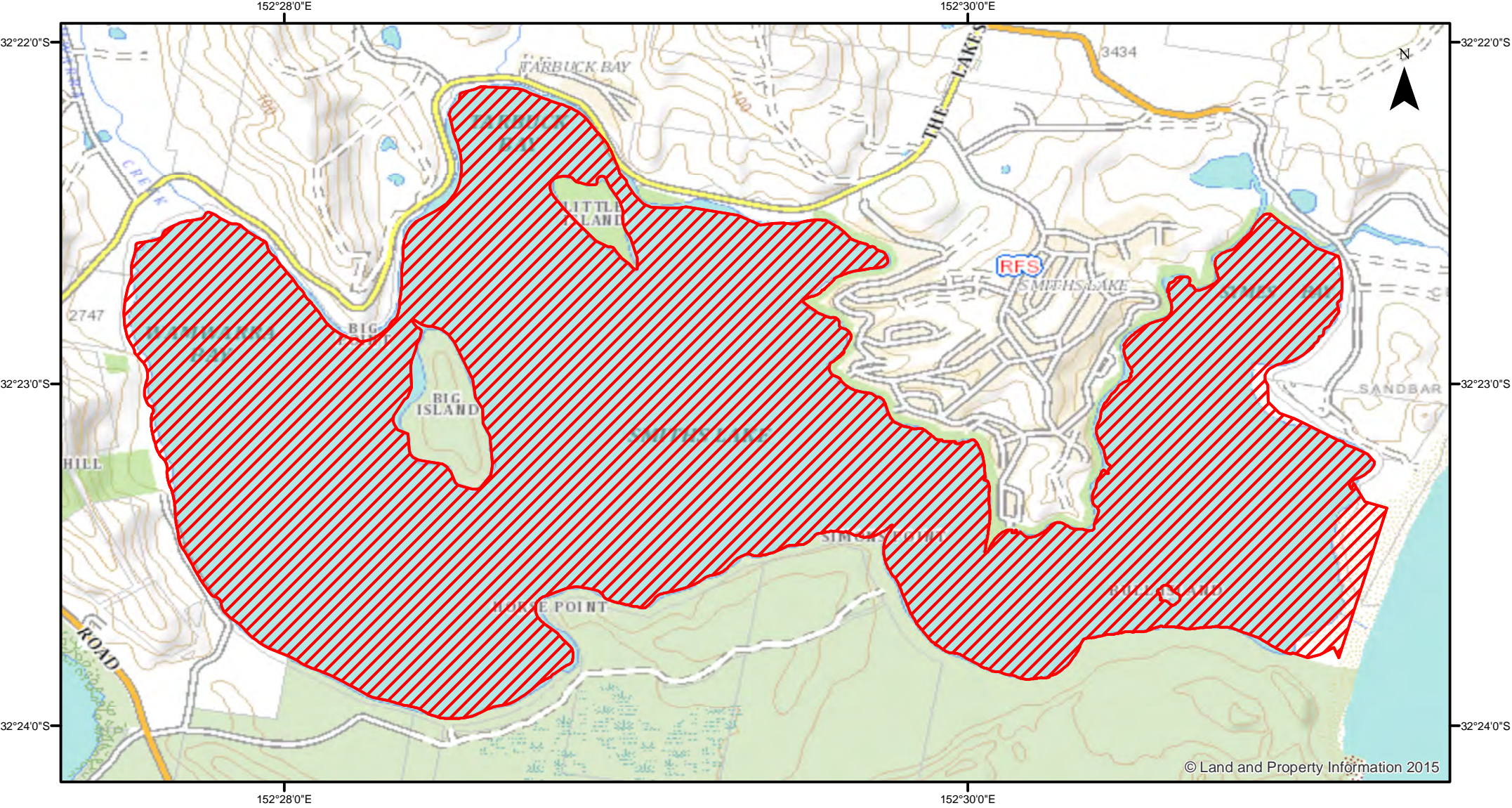


# Estuary General - Smith's Lake - Prawns



© Land and Property Information 2015



Closure

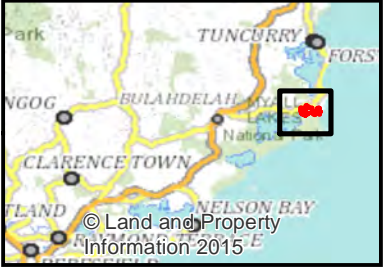
NSW DPI 21 July 2017  
Coordinates are shown in WGS84



Kilometers

## Notice to Map Users

Additional closures may apply. Primary Industries and its employees disclaim all liability for any actions or consequences arising from the use of this information.  
This map is not to be used for navigational purposes as it is indicative only and not guaranteed to be free of error or omission.



© Land and Property  
Information 2015