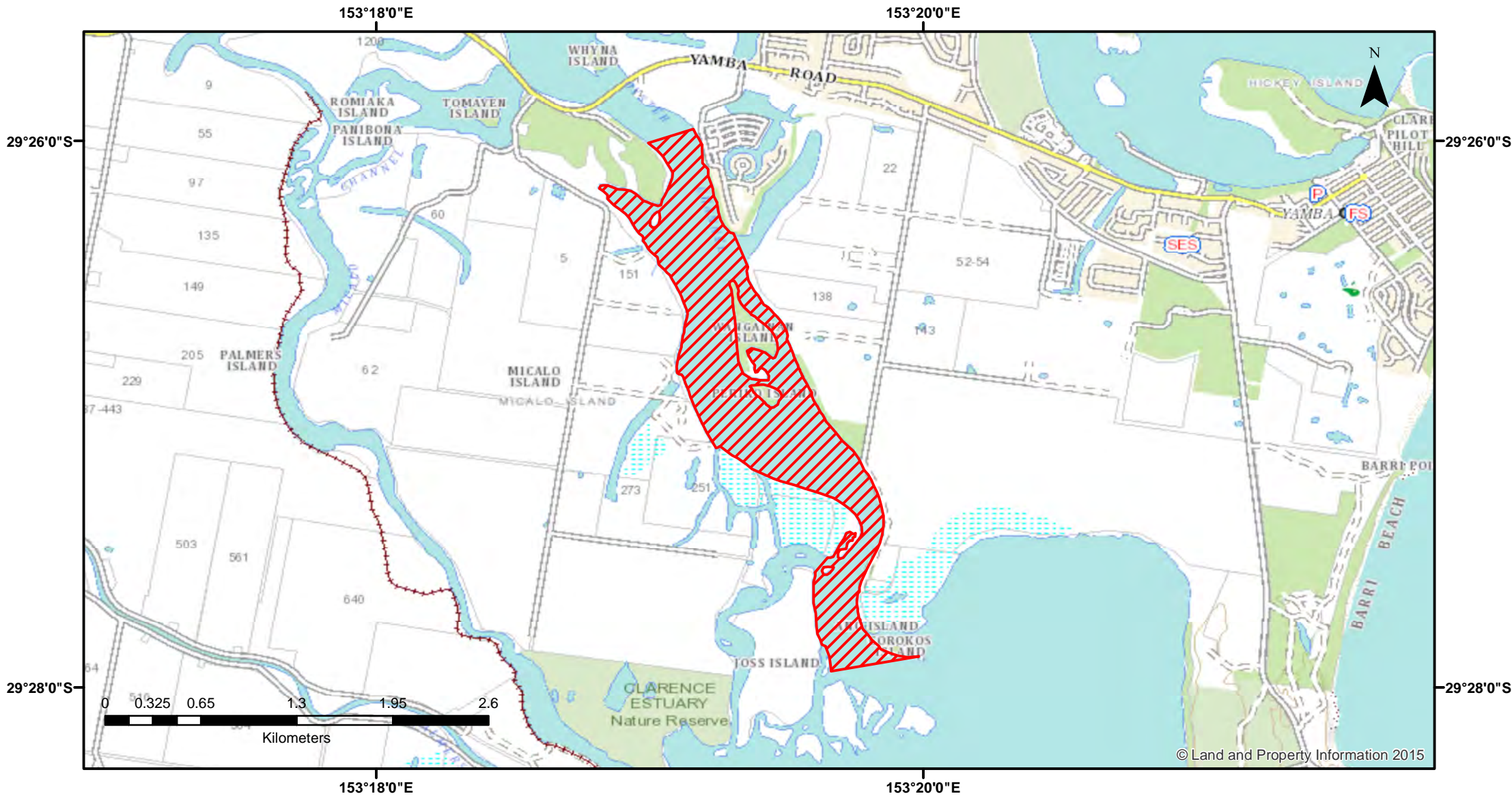


Estuary Prawn Trawl - Upper Oyster Channel



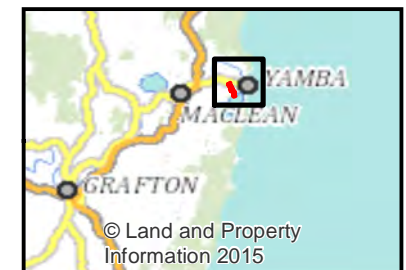
Closure

NSW DPI 12 December 2017
Coordinates are shown in WGS84

Notice to Map Users
Additional closures may apply. Primary Industries and its employees disclaim all liability for any actions or consequences arising from the use of this information. This map is not to be used for navigational purposes as it is indicative only and not guaranteed to be free of error or omission.

Closed Waters

The whole of the waters of Oyster Channel from (the Oyster Channel recreational fishing haven) a line between the Department marker post RFH3 beneath the second set of powerlines crossing Oyster Channel, located approximately 420 metres upstream of the Oyster Channel Road Bridge, and the Department marker post RFH4 on the shore of Micalo Island, upstream to a line drawn from the south eastern extremity of Joss Island to the eastern extremity of Corokos Island.



© Land and Property Information 2015