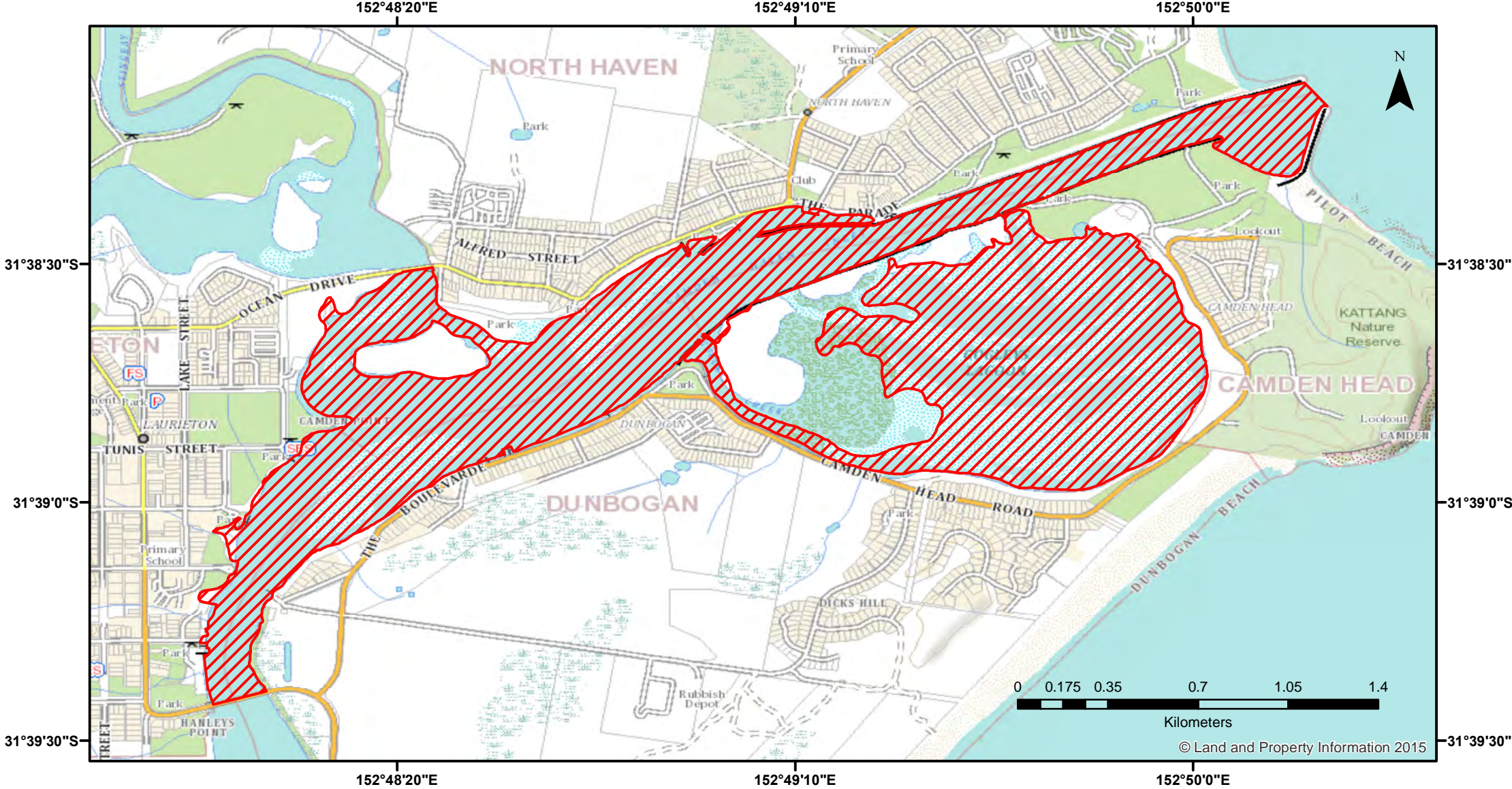


Spearfishing - Camden Haven Inlet



Closure

NSW DPI 21 March 2018
Coordinates are shown in WGS84

Closed Waters
The waters of that part of Camden Haven Inlet, from a line drawn across the entrance to the inlet from the easternmost extremity of the northern training wall to the easternmost extremity of the southern training wall, upstream to the bridge across the Inlet at Laurieton and including the waters of Gogley's Bay and Gogley's Creek, and that part of the waters of Queens Lake Entrance, from their confluence with Camden Haven Inlet upstream to the North Haven road bridge.

Notice to Map Users
Additional closures may apply. Primary Industries and its employees disclaim all liability for any actions or consequences arising from the use of this information. This map is not to be used for navigational purposes as it is indicative only and not guaranteed to be free of error or omission.



© Land and Property Information 2015