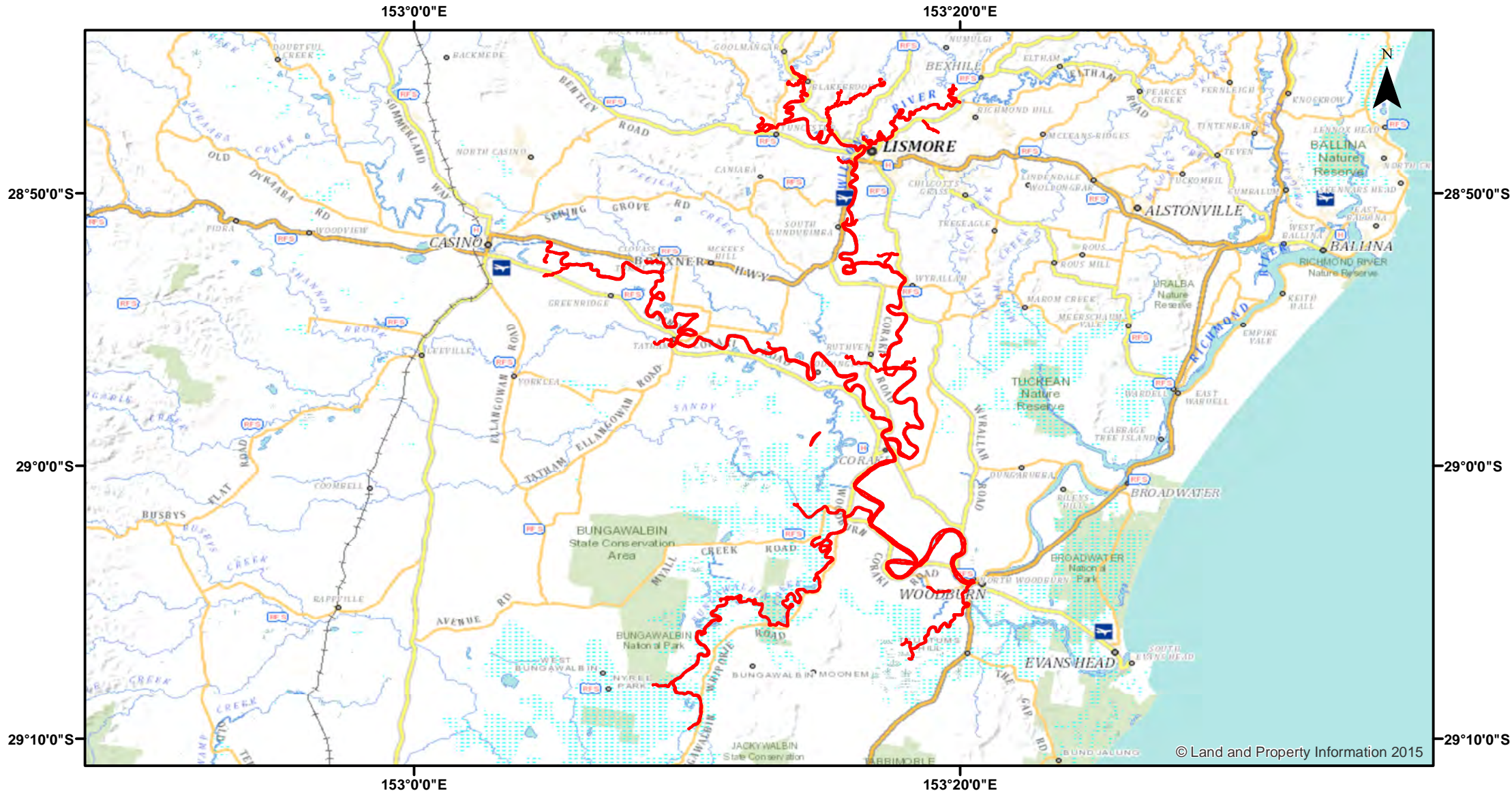


Richmond River and Wilsons River (Upper Reaches)



Closure

NSW DPI 13 April 2018

Coordinates are shown in WGS84

Notice to Map Users
 Additional closures may apply. Primary Industries and its employees disclaim all liability for any actions or consequences arising from the use of this information. This map is not to be used for navigational purposes as it is indicative only and not guaranteed to be free of error or omission.

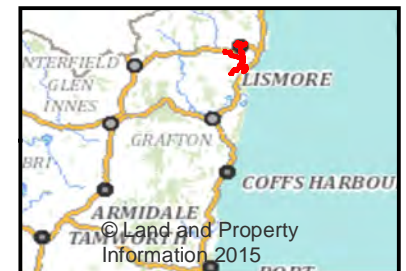
Closed Waters
 The whole of the tidal waters of the Richmond River and tributaries (including all the waters of the Wilsons River), upstream from the Road Bridge at Woodburn.

Prohibited Method
 Trap, other than a bait trap.

0 3.25 6.5 13 19.5 26



Kilometers



© Land and Property Information 2015