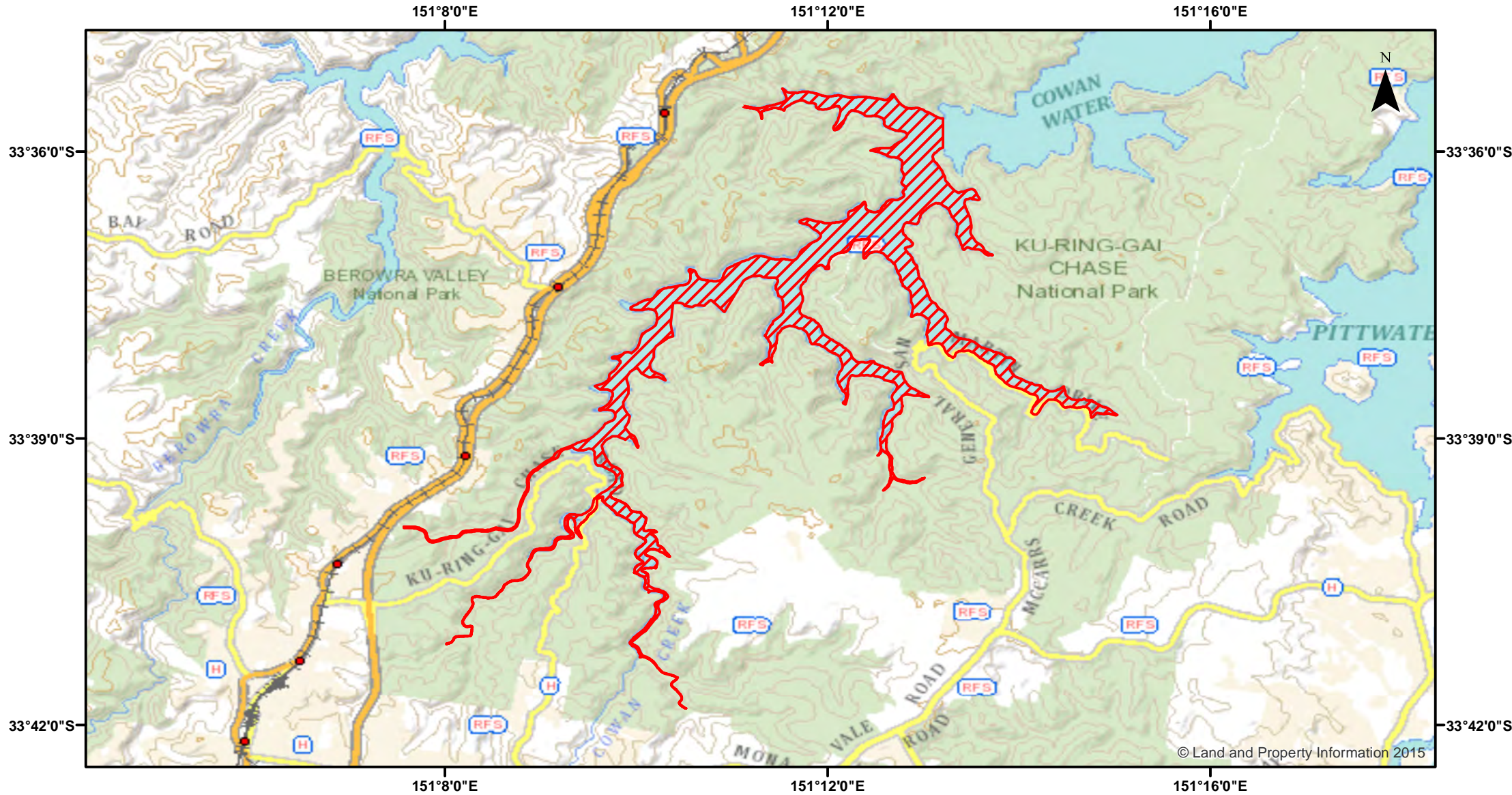


Hawkesbury River (Cowan Creek and Jerusalem Bay) - Nets



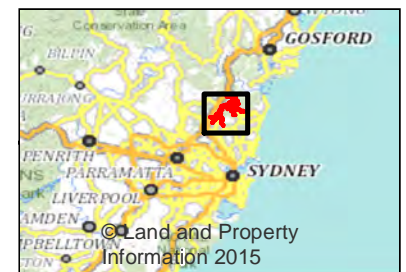
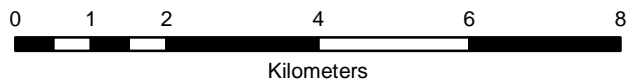
Closure

NSW DPI 27 April 2018
Coordinates are shown in WGS84

Notice to Map Users
Additional closures may apply. Primary Industries and its employees disclaim all liability for any actions or consequences arising from the use of this information. This map is not to be used for navigational purposes as it is indicative only and not guaranteed to be free of error or omission.

Closed Waters
The whole of the waters of Cowan Creek and its tributaries (including Jerusalem Bay), upstream to its source from a line drawn generally north from Cowan Point, to the eastern extremity of the headland on the opposite side of the creek.

Prohibited Method
Net other than a landing net



© Land and Property Information 2015