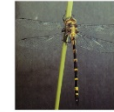


Dataset: Sydney Hawk Dragonfly Indicative Distribution in NSW



Indicative Distribution in NSW  
Sydney Hawk Dragonfly



(*Austrocordulia leonardi*)



— Indicative Distribution

Distribution based on survey records and expert opinion, 2021.



The information contained in this publication is based on knowledge and understanding at the time of writing. However, because of advances in knowledge, users are alerted of the need to ensure that the information upon which they rely is up to date and to check the currency of the information with the appropriate office of the Department of Primary Industries or the user's independent advisor. Public Liability.

Map data provided by: ESRI World Topographic(2021)  
© State of New South Wales through  
Department of Primary Industries 2021



**Dataset/Product Description**

The Sydney Hawk Dragonfly (*Austrocordulia leonardi*) is an extremely rare species of dragonfly. It is black and yellow with clear wings spanning 60-70mm, and with an abdomen length of 50-55mm. The aquatic larvae have a body length of 22-24mm. The Sydney Hawk Dragonfly spends most of its life underwater as an aquatic larva, before metamorphosing and emerging from the water as an adult. Adults are thought to only live for several weeks or a few months. They have specific habitat requirements, and have only ever been collected from deep river pools with cooler water and permanent flow. Larvae are found under rocks.

[www.dpi.nsw.gov.au/fishing/species-protection/what-current/endangered-species2/sydney-hawk-dragonfly](http://www.dpi.nsw.gov.au/fishing/species-protection/what-current/endangered-species2/sydney-hawk-dragonfly)

The indicative distribution was created using the NSW topographic hydroline:

[www.spatial.nsw.gov.au/data/assets/pdf\\_file/0019/60931/NSW\\_Topographic\\_Data\\_Dictionaryv8.pdf](http://www.spatial.nsw.gov.au/data/assets/pdf_file/0019/60931/NSW_Topographic_Data_Dictionaryv8.pdf)

Extent was determined using species records and expert opinion, within the hydrologic units determined by the Water Sharing Plan process: [www.waternsw.com.au/supply/regional-nsw/water-sharing-plans](http://www.waternsw.com.au/supply/regional-nsw/water-sharing-plans)

## NSW Spatial Dataset Profile

<b>Dataset Uses</b>	<p>The dataset has a number of primary functions including but not limited to;</p> <ul style="list-style-type: none"> <li>• spatially representing the status of fish communities at river reach scale across NSW</li> <li>• providing additional support to strategic planning frameworks to ensure they effectively integrate biodiversity considerations into planning and decision making processes</li> </ul>
<b>Current Status</b>	<p>The Sydney Hawk Dragonfly Distribution in NSW dataset was produced in 2021 in addition to the NSW Fish Community Status 2015: <a href="http://www.dpi.nsw.gov.au/_data/assets/pdf_file/0007/669589/fish-communities-and-threatened-species-distributions-of-nsw.pdf">www.dpi.nsw.gov.au/_data/assets/pdf_file/0007/669589/fish-communities-and-threatened-species-distributions-of-nsw.pdf</a></p>
<b>Standards &amp; Specifications</b>	<p>ANZLIC Metadata Profile: An Australian/New Zealand Profile of AS/NZS ISO 19115:2005, Geographic information – Metadata</p>
<b>Access and Licensing</b>	<p>The data is licensed under Creative Commons License Deed Attribution-NonCommercial-NoDerivatives 4.0 International (CC BY-NC-ND 4.0).</p> <p>Full credit must be given to NSW Department of Primary Industries.</p>
<b>Metadata</b>	<p>See: NSW Department of Primary Industries (2015), NSW Fish Community Status 2015 – Final Report: <a href="http://www.dpi.nsw.gov.au/_data/assets/pdf_file/0007/669589/fish-communities-and-threatened-species-distributions-of-nsw.pdf">www.dpi.nsw.gov.au/_data/assets/pdf_file/0007/669589/fish-communities-and-threatened-species-distributions-of-nsw.pdf</a></p>
<b>Updates</b>	<p>As required.</p>
<b>Custodian Agency &amp; Contact</b>	<p>NSW DPI Fisheries Email: <a href="mailto:fisheries.data@dpi.nsw.gov.au">fisheries.data@dpi.nsw.gov.au</a></p>
<b>Aggregator(s)</b>	
<b>Distributor(s)</b>	<p><a href="https://www.dpi.nsw.gov.au/about-us/research-development/spatial-data-portal">https://www.dpi.nsw.gov.au/about-us/research-development/spatial-data-portal</a></p>
<b>Additional Comments</b>	