

Scenario - Basic Peak Body

Projected Budget 2024-2026

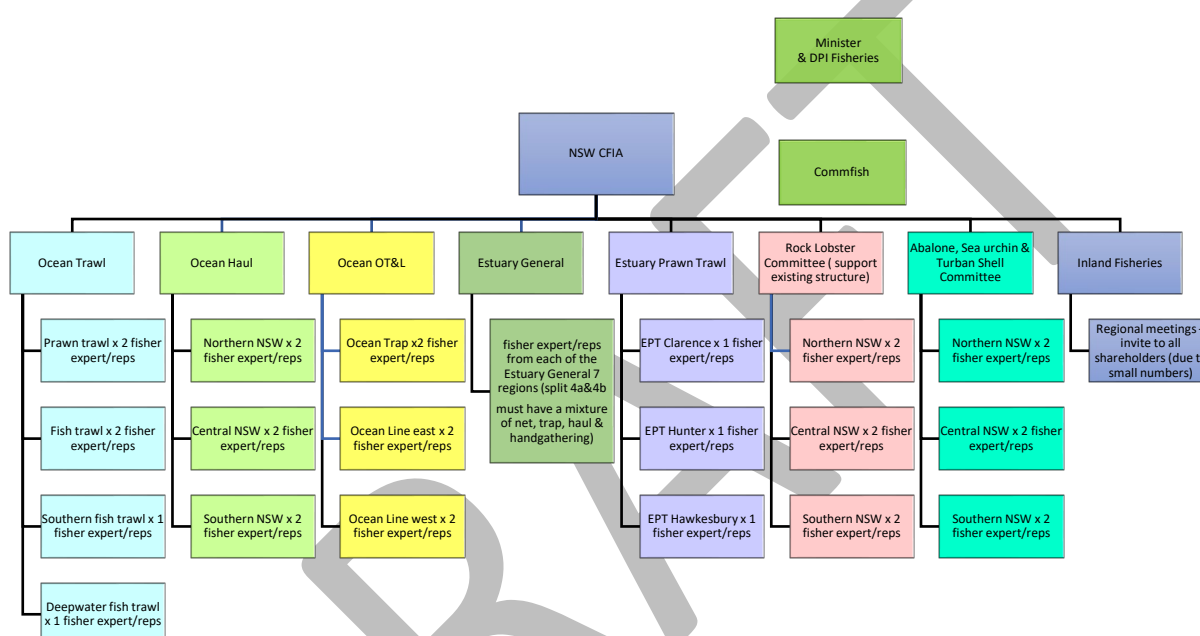
ACTIVITY	COST YEAR 1	COST YEAR 2	COST YEAR 3
	\$	\$	\$
Chief Executive Officer (incl super @ 10.5%)	176800	182720	188640
Admin / Finance (incl super @ 10.5%)	99450	102780	106110
Independent Chair Sitting fees	32000	33000	34000
Directors Travel/Accommodation	10000	10000	11000
Overheads / on costs (leave loading, workers compensation insurance, WHS)	63450	65700	67950
Office rent / Hire rooms	28000	28000	28000
Vehicle lease / Rego & insurance / Fuel	25000	20000	20000
Phone line / rental	3000	3000	3000
IT - computers, photocopiers, internet	5000	4000	4000
Printing/publications – Newsletter etc	5000	5000	5000
Postage	5000	5000	5000
Office expenses	4000	4000	4000
Website establishment / maintenance	2000	1000	1000
Fishery Consultation Meetings (see page 2 for details)*	153600	155200	155200
Region meeting costs - Local Committees	10000	12000	14000
Training – Directors & Staff	4000	2000	2000
Travel	20000	20000	20000
Insurance – professional Indemnity etc	6000	6000	6000
TOTAL - ITEM 2	\$ 652,500.00	\$ 659,400.00	\$ 674,900.00
GST return	\$ 34,204.55	\$ 33,990.91	\$ 34,559.09
	\$ 618,295.45	\$ 625,409.09	\$ 640,340.91
Government Funding Approved	\$ 350,000.00	\$ 350,000.00	\$ 350,000.00
Surplus / (Overspend)	\$ (268,295.45)	\$ (275,409.09)	\$ (290,340.91)

Membership Levy Options to Breakeven

400 members at \$14/wk or \$700/year	\$ 280,000.00	\$ 280,000.00	\$ 280,000.00
500 members at \$11/wk or \$500/year	\$ 286,000.00	\$ 286,000.00	\$ 286,000.00
800 members at \$7/wk or \$360/year	\$ 288,000.00	\$ 288,000.00	\$ 288,000.00

Fishery Consultation Meetings*

- Part of the longer term plan for the peak body is to provide consultation services to government and industry on fisheries matters in response to COMFISH and DPI.
- This budget costing provision is to fund a trial set of fisheries consultation meetings.
- There are proposed to be eight (8) fishery groupings in NSW. (see schematic below)



- The projected costs (below) enable the peak body to trial two (2) consultation meetings per year for each fishery grouping in NSW.
- The budget includes provision for an Independent Chair to run the sixteen (16) meetings.

Activity	Cost	Notes
Independent Chair	\$32,000	Based on \$1,000 per day for 2 days per meeting with 8 fishery meetings x 2 per year
Travel – Independent Chair	\$12,800	\$800 for travel/accommodation (800 x 8 x 2)
Travel – CEO / EA	\$12,800	\$800 for travel/accommodation (800 x 8 x 2)
Travel for fishers ~ 5 fisher delegates per fishery	\$80,000	Based on \$1000 for travel /accommodation for 8 Fisheries Committees (40 fishers) meeting twice.
Room Hire / Food	<u>\$16,000</u>	8 meetings twice a year at \$1000/meeting
Total	\$153,600	