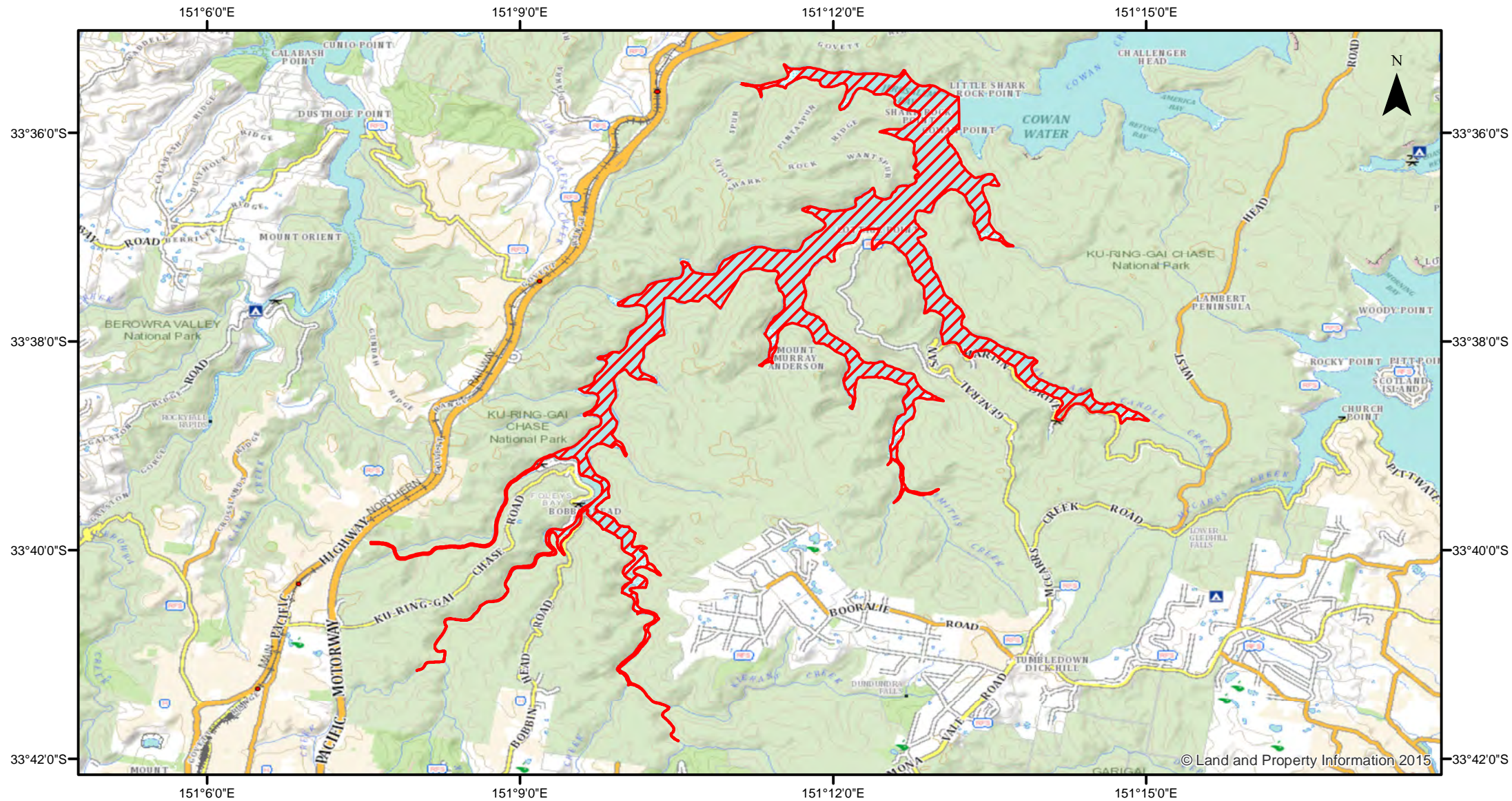


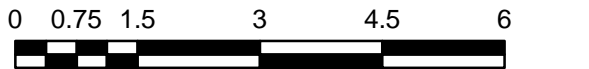
# Estuary General - Hawkesbury River (Cowan creek and Jerusalem Bay) - Nets



Closure

NSW DPI 15 August 2017

Coordinates are shown in WGS84

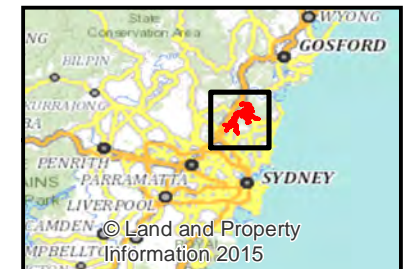


Kilometers

## Notice to Map Users

Additional closures may apply. Primary Industries and its employees disclaim all liability for any actions or consequences arising from the use of this information.

This map is not to be used for navigational purposes as it is indicative only and not guaranteed to be free of error or omission.



© Land and Property Information 2015