

Estuary Prawn Trawl - Pittwater

151°15'0"E

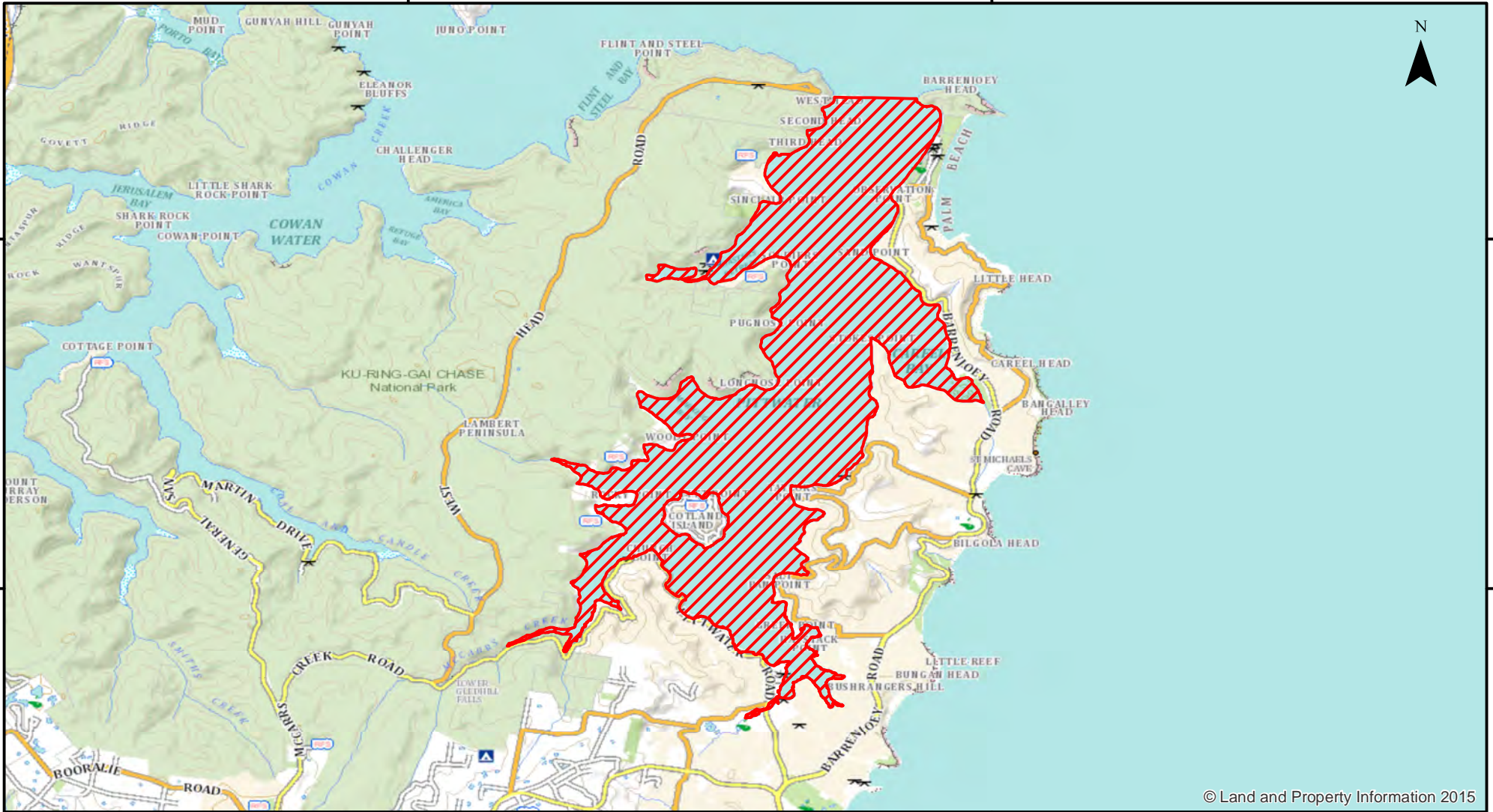
151°20'0"E

33°36'0"S

33°36'0"S

33°39'0"S

33°39'0"S



© Land and Property Information 2015

151°15'0"E

151°20'0"E



Closure

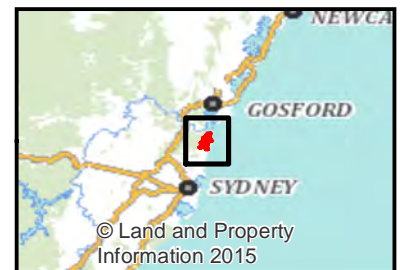
NSW DPI 19 December 2017
Coordinates are shown in WGS84

Closed Waters
The whole of the waters of Pittwater south of a line drawn from Shark (or Warners) Rock to the north eastern corner of West Head.

Notice to Map Users
Additional closures may apply. Primary Industries and its employees disclaim all liability for any actions or consequences arising from the use of this information. This map is not to be used for navigational purposes as it is indicative only and not guaranteed to be free of error or omission.

0 0.75 1.5 3 4.5 6

Kilometers



© Land and Property Information 2015