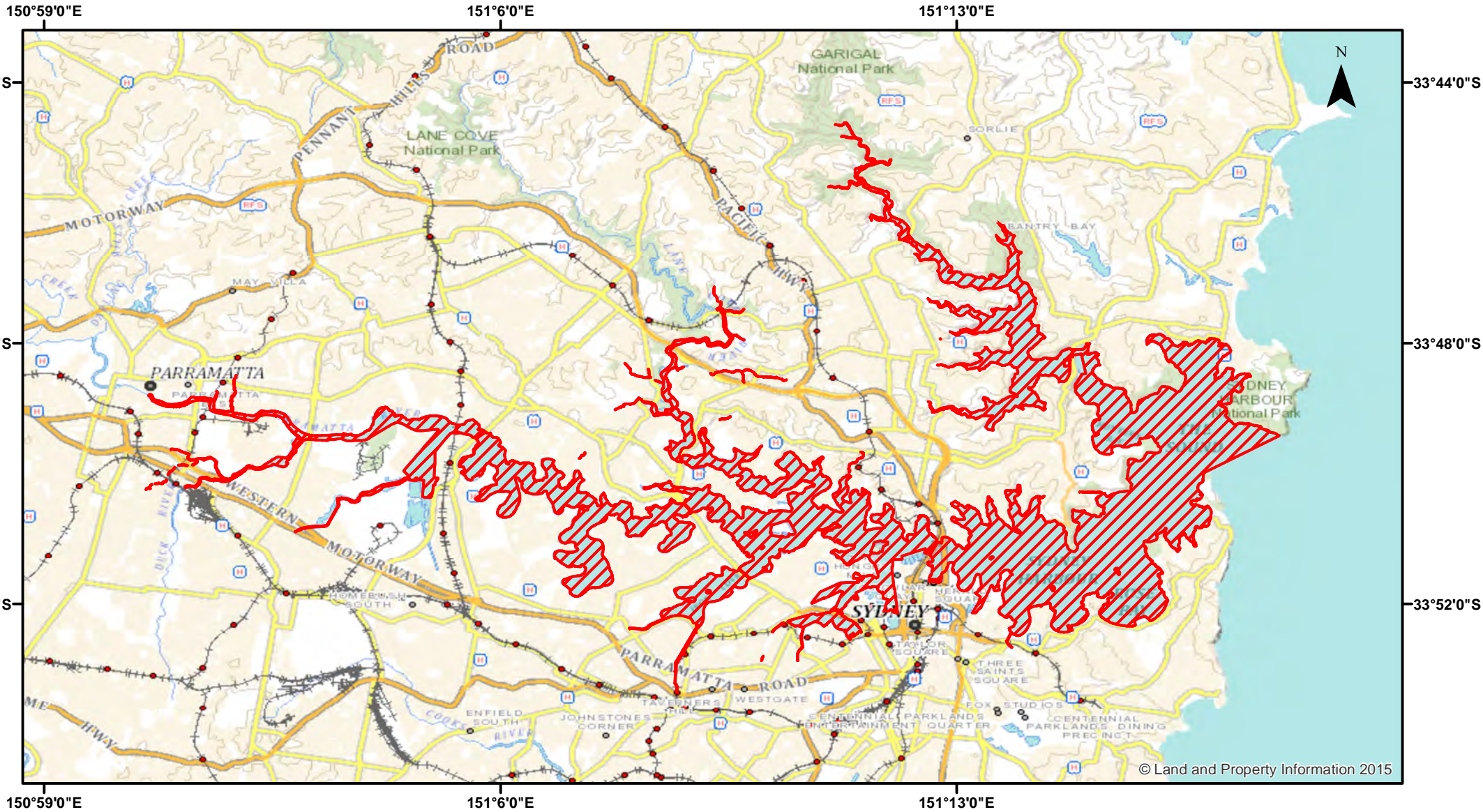


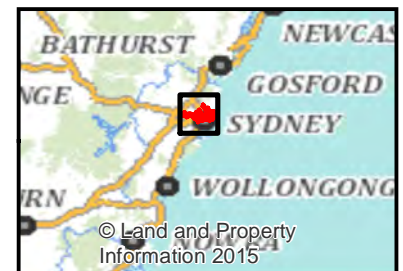
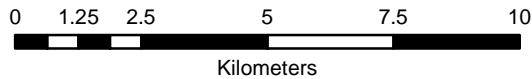
Lobster - Port Jackson (Sydney Harbour)



Closure

NSW DPI 16 January 2018
Coordinates are shown in WGS84

Closed Waters
The whole of the waters of Port Jackson and its tributaries, upstream of a line drawn from the northern extremity of South Head to the southern extremity of North Head.



Notice to Map Users
Additional closures may apply. Primary Industries and its employees disclaim all liability for any actions or consequences arising from the use of this information. This map is not to be used for navigational purposes as it is indicative only and not guaranteed to be free of error or omission.

© Land and Property Information 2015

© Land and Property Information 2015