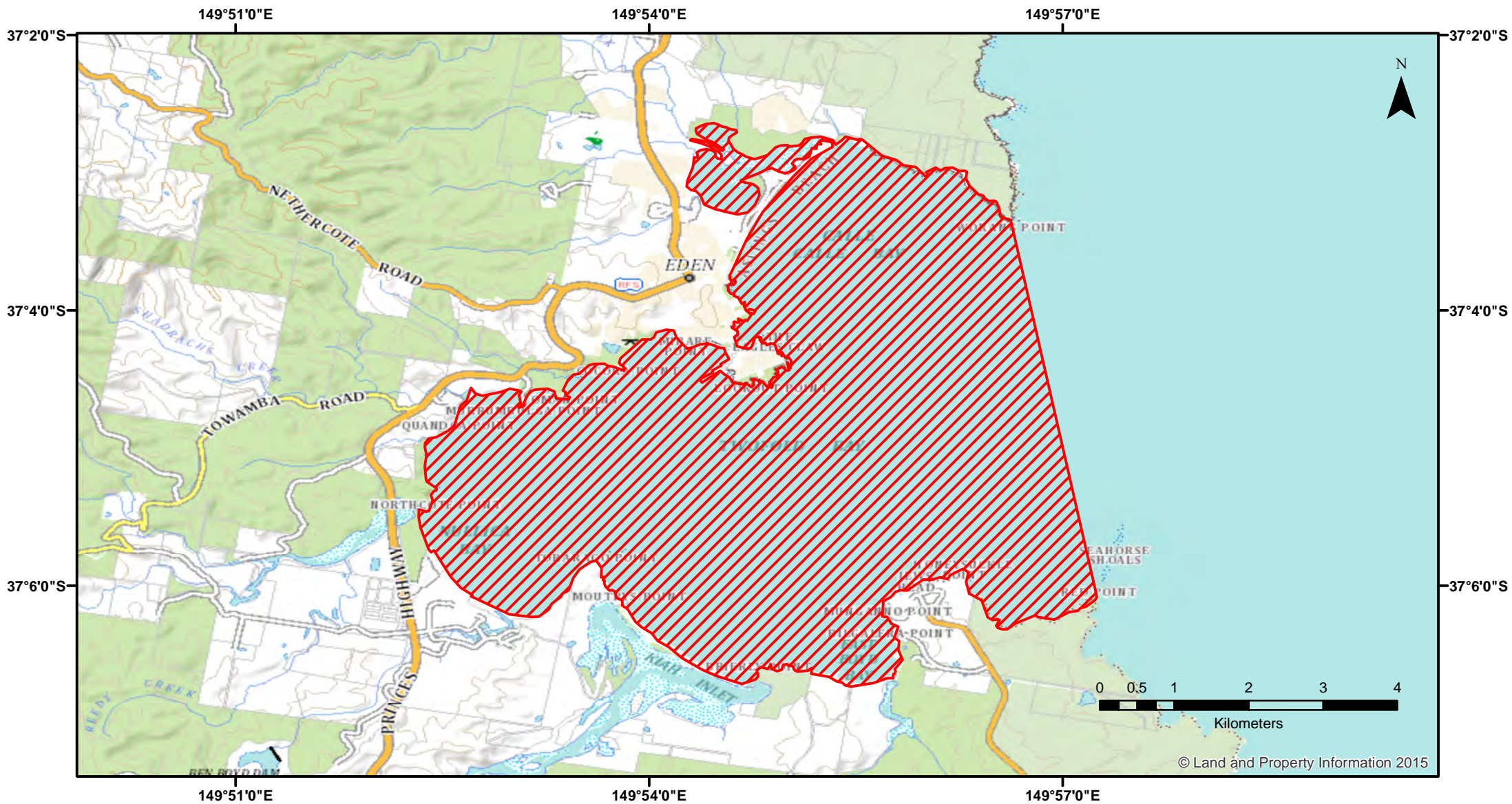


# Southern Fish Trawl - Twofold Bay



Closure

NSW DPI 15 March 2018

Coordinates are shown in WGS84

**Notice to Map Users**

Additional closures may apply. Primary Industries and its employees disclaim all liability for any actions or consequences arising from the use of this information. This map is not to be used for navigational purposes as it is indicative only and not guaranteed to be free of error or omission.

**Closed Waters**  
 The whole of the waters of Twofold Bay together with its bays and inlets west of a line drawn from Worang Point (North Head) southerly to Red Point (South Head).

**Prohibited Method**  
 Otter trawl net (fish) or a Danish seine trawl net (fish)

