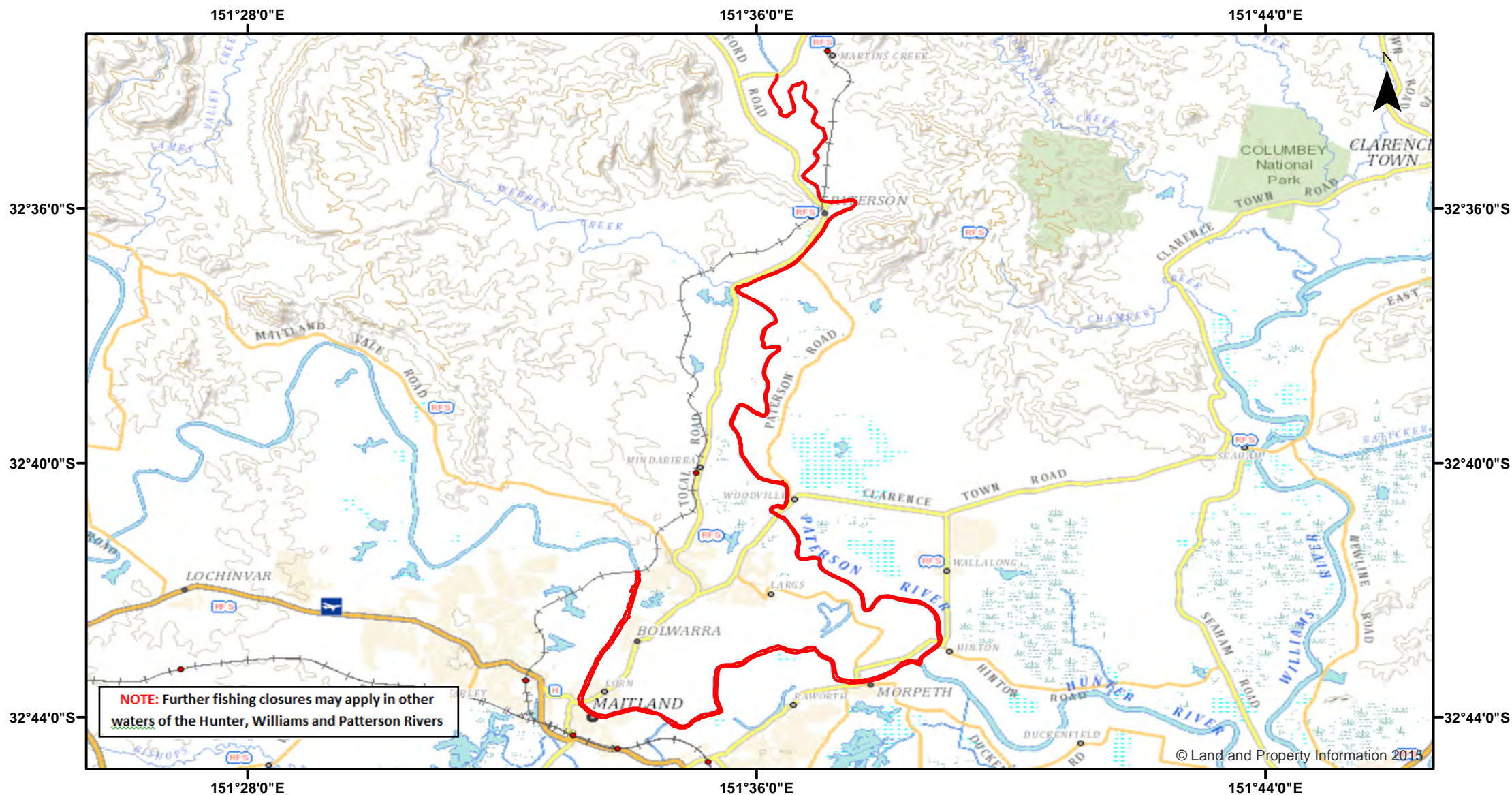


Hunter (Upper Reaches) and Patterson River



Closure

NSW DPI 19 April 2018

Coordinates are shown in WGS84

Notice to Map Users

Additional closures may apply. Primary Industries and its employees disclaim all liability for any actions or consequences arising from the use of this information. This map is not to be used for navigational purposes as it is indicative only and not guaranteed to be free of error or omission.

Closed Waters

The whole of the tidal waters of Hunter and Paterson Rivers and their tributaries, upstream from a line drawn across Hunter River at the junction of those rivers to the railway bridge crossing at Oakhampton on Hunter River and to Gostwyck Bridge near Martins Creek on Paterson River.

Prohibited Method

Net or Trap, other than a dip or scoop net (prawns), a landing net or a bait trap.

0 1.25 2.5 5 7.5 10

Kilometers

