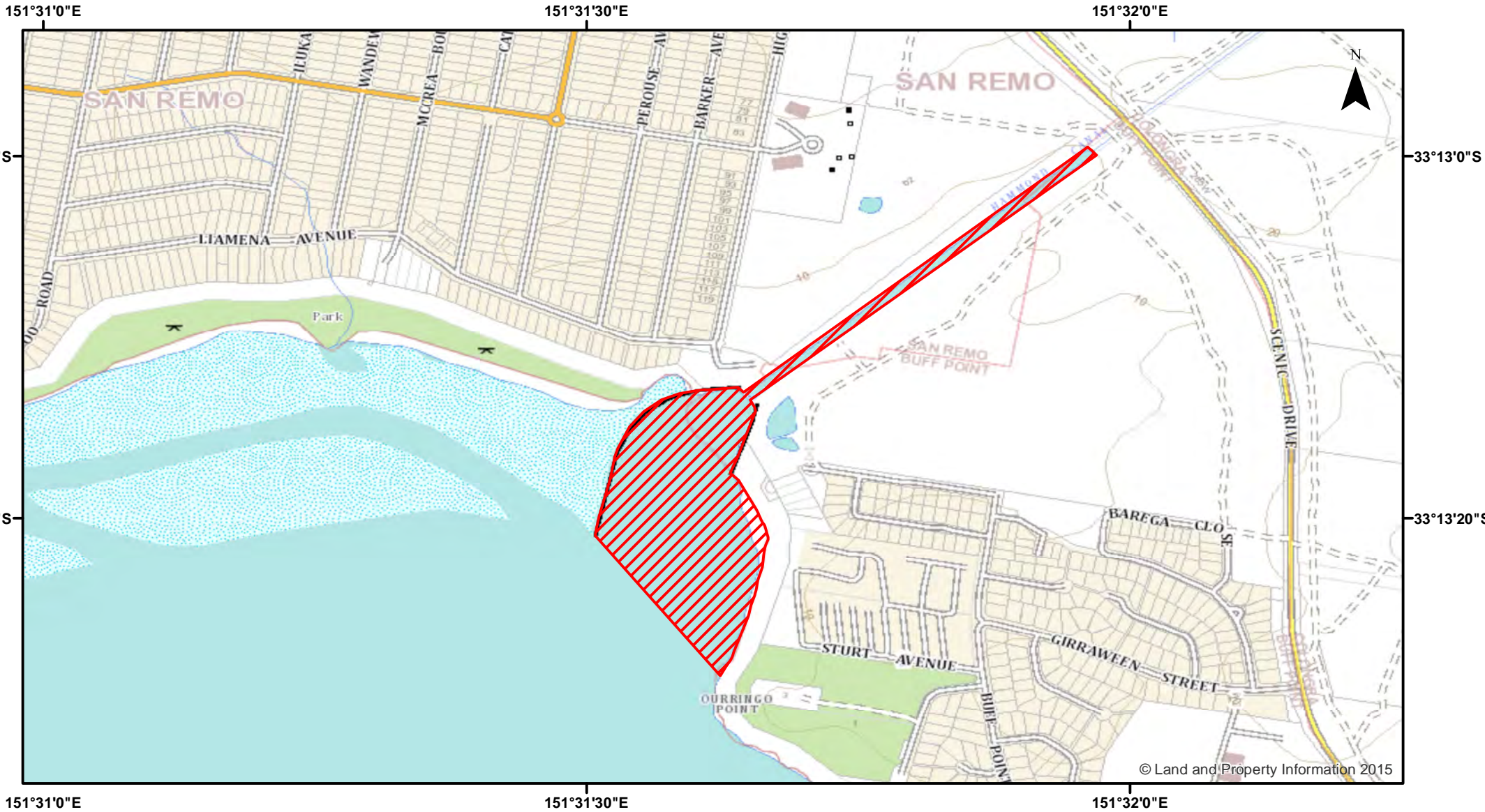


Budgewoi Lake - All Methods



Closure

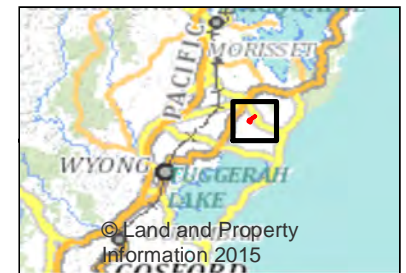
NSW DPI 26 April 2018
Coordinates are shown in WGS84

Notice to Map Users
Additional closures may apply. Primary Industries and its employees disclaim all liability for any actions or consequences arising from the use of this information. This map is not to be used for navigational purposes as it is indicative only and not guaranteed to be free of error or omission.

Closed Waters
The whole of the waters of that part of Munmorah Power House outlet canal, Budgewoi Lake, northeast of a line bearing 140° across the canal from the south-westernmost extremity of the breakwater on the south-western side of the canal to Ourringo Point.

Prohibited Method
Any method

Closure Period
6pm on each day to 6am on the following day in May to August (inclusive) in each year.



© Land and Property Information 2015