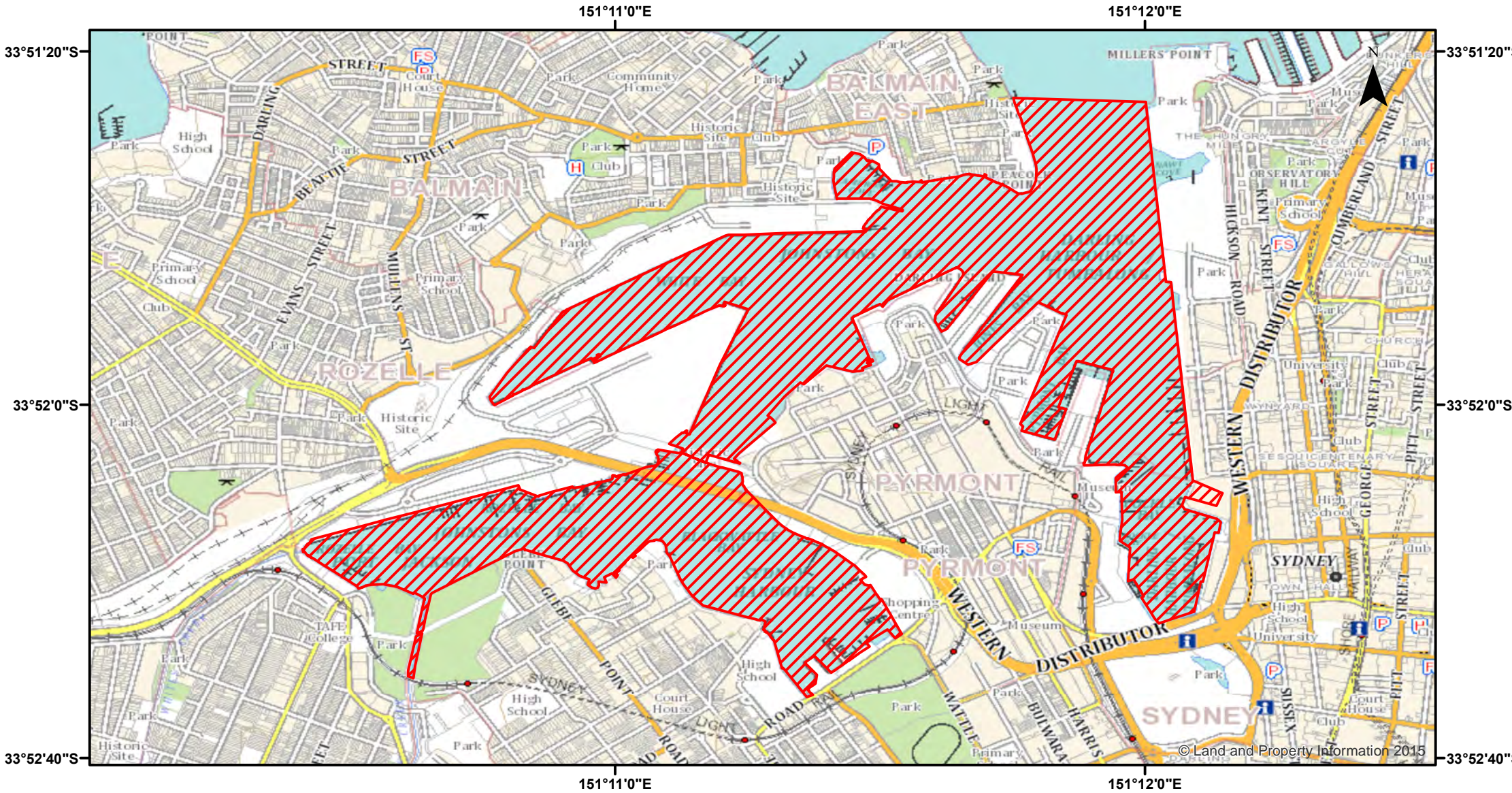


Port Jackson (Darling Harbour and Bays) - Nets



Closure

NSW DPI 2 May 2018

Coordinates are shown in WGS84

Notice to Map Users
 Additional closures may apply. Primary Industries and its employees disclaim all liability for any actions or consequences arising from the use of this information. This map is not to be used for navigational purposes as it is indicative only and not guaranteed to be free of error or omission.

Closed Waters
 The whole of the waters of Darling Harbour, Johnston's Bay, White Bay, Rozelle Bay, and Blackwattle Bay, south of a line drawn from the NSW Maritime tower, to Darling Street ferry wharf.

Prohibited Method
 Net other than a landing net.

0 0.175 0.35 0.7 1.05 1.4



Kilometers

