

Murrumbidgee River - Burrinjuck Dam

148°34'40"E

148°34'50"E

148°35'0"E



35°0'5"S

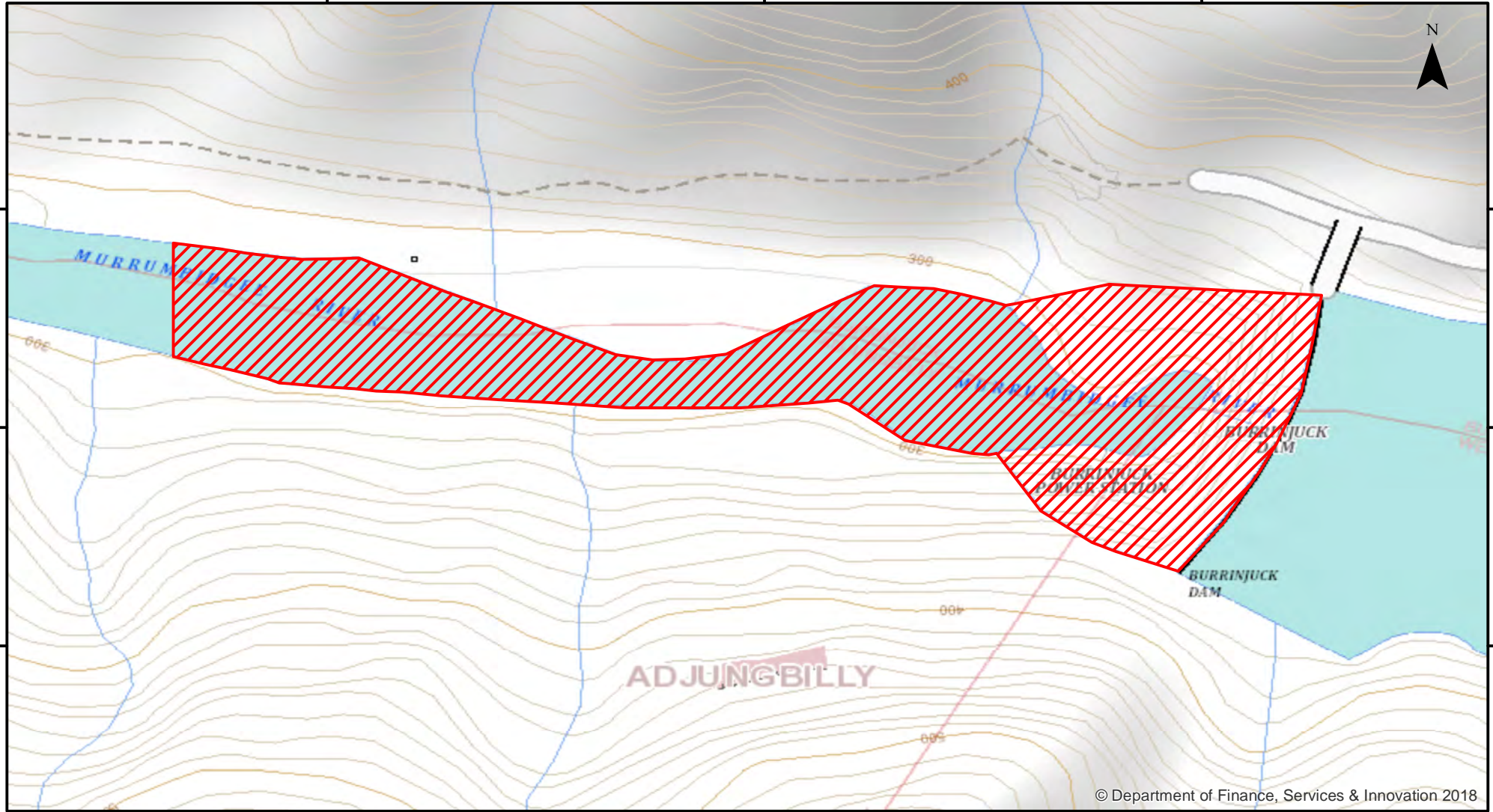
35°0'5"S

35°0'10"S

35°0'10"S

35°0'15"S

35°0'15"S



148°34'40"E

148°34'50"E

148°35'0"E



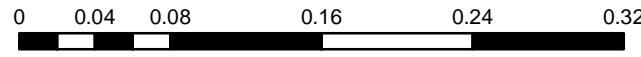
Closure

NSW DPI 9 August 2018
Coordinates are shown in WGS84

Notice to Map Users
Additional closures may apply. Primary Industries and its employees disclaim all liability for any actions or consequences arising from the use of this information. This map is not to be used for navigational purposes as it is indicative only and not guaranteed to be free of error or omission.

Closed Waters
That part of the Murrumbidgee River within 640 metres downstream from the weir face in line with the western end of the No. 1 power station at Burrinjuck Dam.

Prohibited Method
All methods.



Kilometers

