



**The new state
of business**

The effectiveness of external monitoring of institutions conducting animal research – A review of outcomes over 20 years

PW Johnson¹, M Blanchard², LD Chave¹ and MA Rose³

¹NSW Department of Primary Industries Animal Welfare Unit

²Australian Health Services Research Institute University of Wollongong

³ Prince of Wales Clinical School – Operating Prince of Wales Hospital
Randwick

29 September 2015

Animal Research Act 1985

An Act to protect the welfare of animals used in connection with animal research

Guiding principle –

To create legislation which takes into account the rights of opposing groups to hold and express differing views and which attempts to address and recognise issues on which opinions differ in such a way as to bring a degree of acceptance from all concerned



Department of
Primary Industries

Capacity to suffer...

Agreed

- Legal protection
- Prevention of cruelty
- Moral status
- Duty of care



Legislation

Lack of Consensus

- Limitations to permitted practices
- Quality of life
- Response to moral claims
- Sentience – Species



Ethical Debate



Department of
Primary Industries

Legislative goals

- Provide a balance between accountability for both the decision to use animals for scientific purposes and the conduct of those activities and the value of freedom of scientific enquiry.
- Judgments need to reflect a balanced view especially where lack of community consensus.
- Duty of care
- Institution < > Government

Accreditation

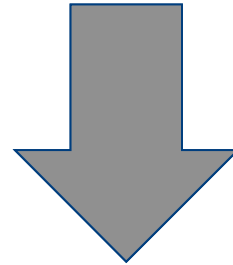
- Responsibility of ARRP to advise Director General on applications for accreditation
- Evidence of compliance with the Code
- Reviewed other approaches - USA and Canada
- Developed internal procedures/guidelines
- Role of site visit - to gather evidence
- ARRP to determine conditions and recommendations on evidence gathered





1990

Guiding Principles



Ethical Framework

- Responsibilities
- Operation of Animal Ethics Committee
- AEC membership
- AEC applications
- AEC review process

Welfare Outcomes

- Animal wellbeing
- Animal care
- Monitoring
- Housing and facilities
- Record keeping



Department of
Primary Industries

Methods

Types of conditions and recommendations were classified as:

Husbandry & Housing
Buildings & Facilities
Environmental Enrichment } Housing, Husbandry & Physical Environment

Monitoring & Records
Breeding & Holding
Operating Procedures } Operations

Analgesia, Anaesthesia & Treatments
Protocols & Reports
Adverse Event Response } Ethics & Reporting

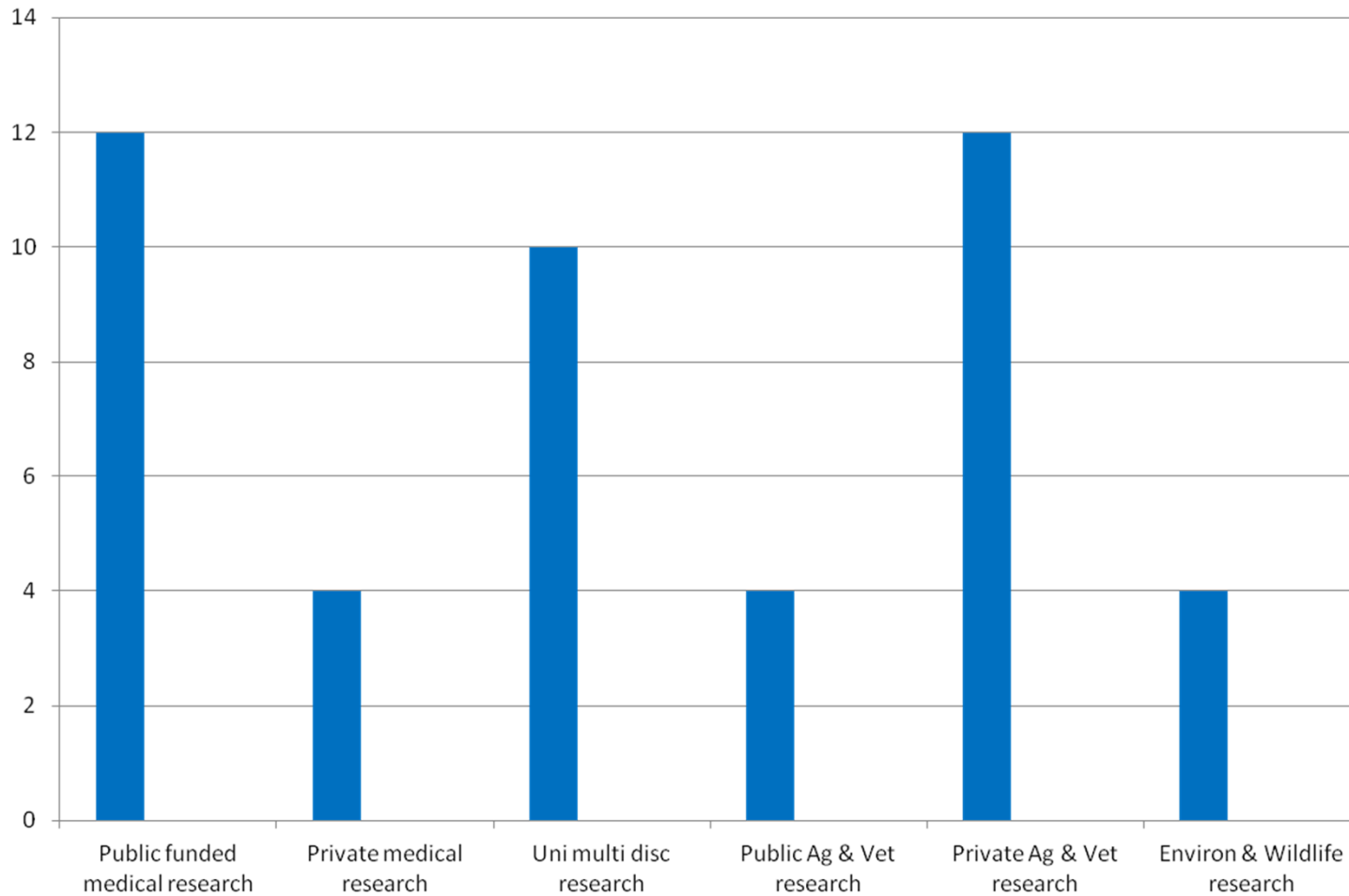
Legislative & Code
Animal Identification
Training & Resources } Compliance & Training



Analysis

- Inspections were aggregated into 4 to 6 year time periods to reduce volatility due to lower inspection numbers in the early years in which inspections were done.
- Each time period included different numbers of inspections so that direct comparison of numbers of conditions and recommendations would just reflect differences in the number of inspections – ***Useless for trends over time!***
- To remove this effect, the ***average*** numbers of conditions and recommendations per inspection were calculated to allow ***valid comparison between different time periods*** and to more ***easily see the trends over time.***

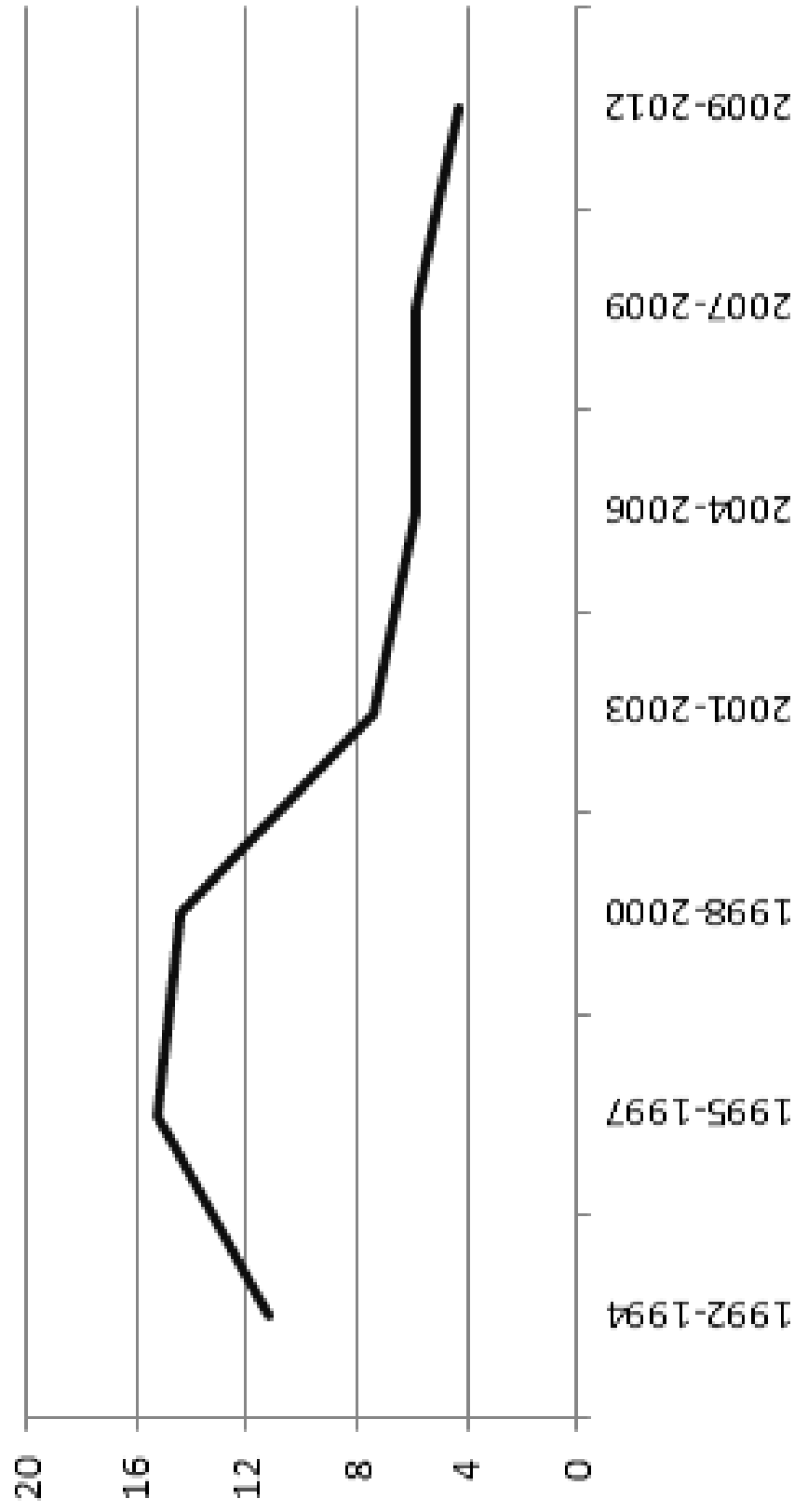
Types of Accredited Animal Research Establishments – Total 46 Establishments



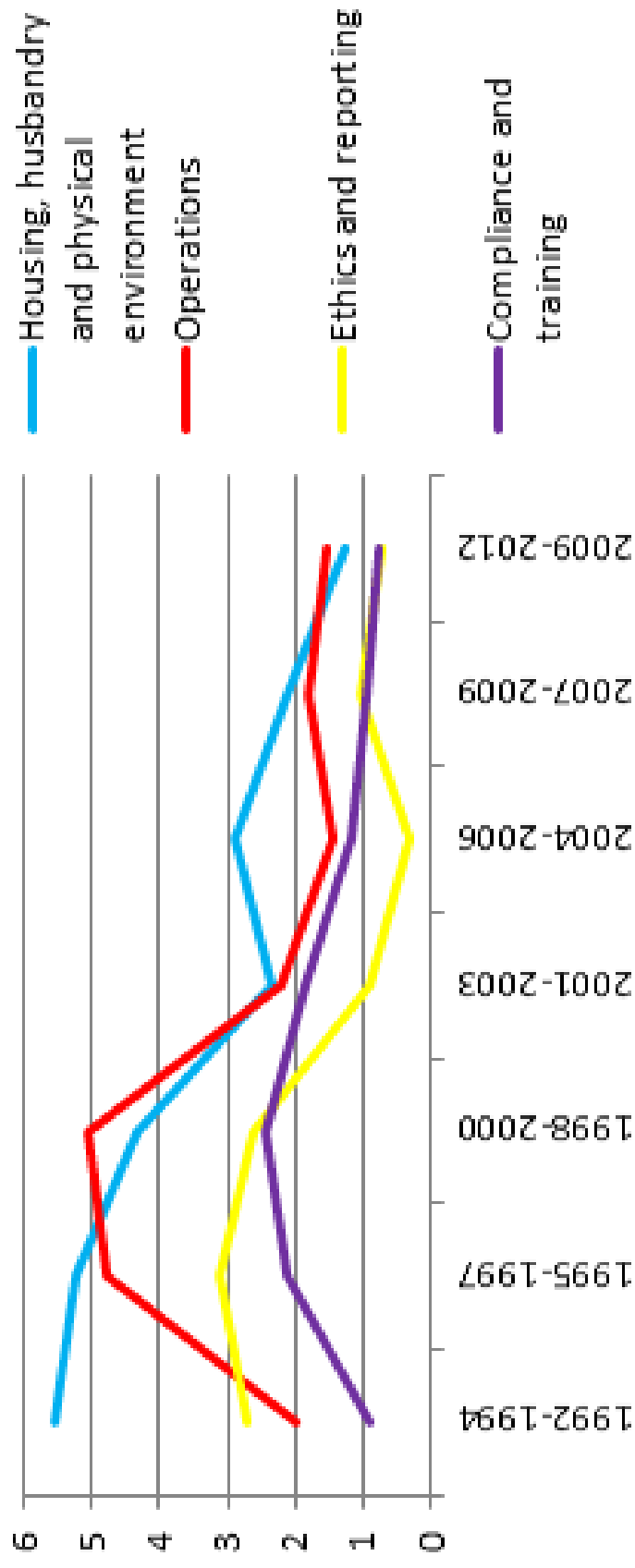
Inspections of 46 Animal Research Establishments by Type

Years	Public funded medical research (12)	Private medical research (4)	Uni multidisc research (10)	Public primary industry Ag & Vet research (4)	Private primary industry Ag & Vet research (12)	Environ & Wildlife research (4)	Total inspects by years
92-97	9	2	14	7	9	4	45
98-02	16	5	24	10	14	6	75
03-07	19	4	15	8	18	8	72
08-12	17	3	14	5	9	2	50
Total by type	61	14	67	30	50	20	242

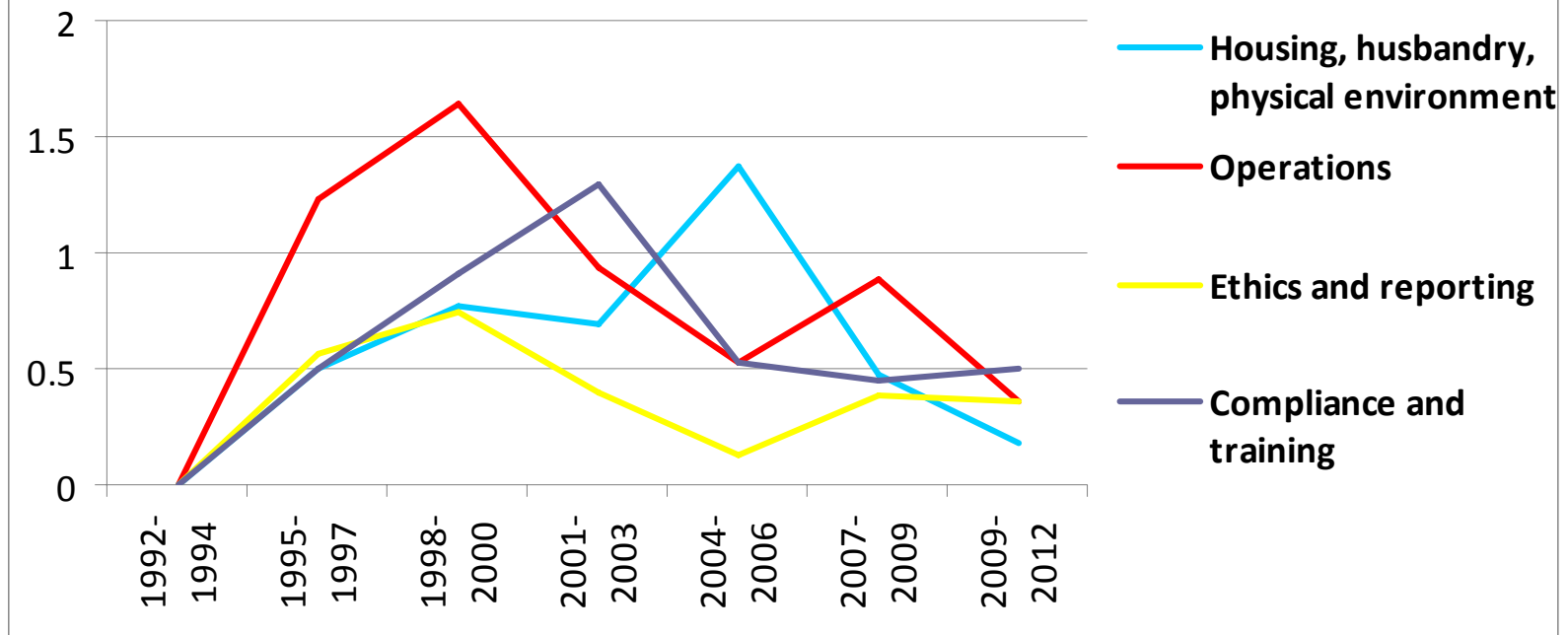
Average number of conditions and recommendations per inspection



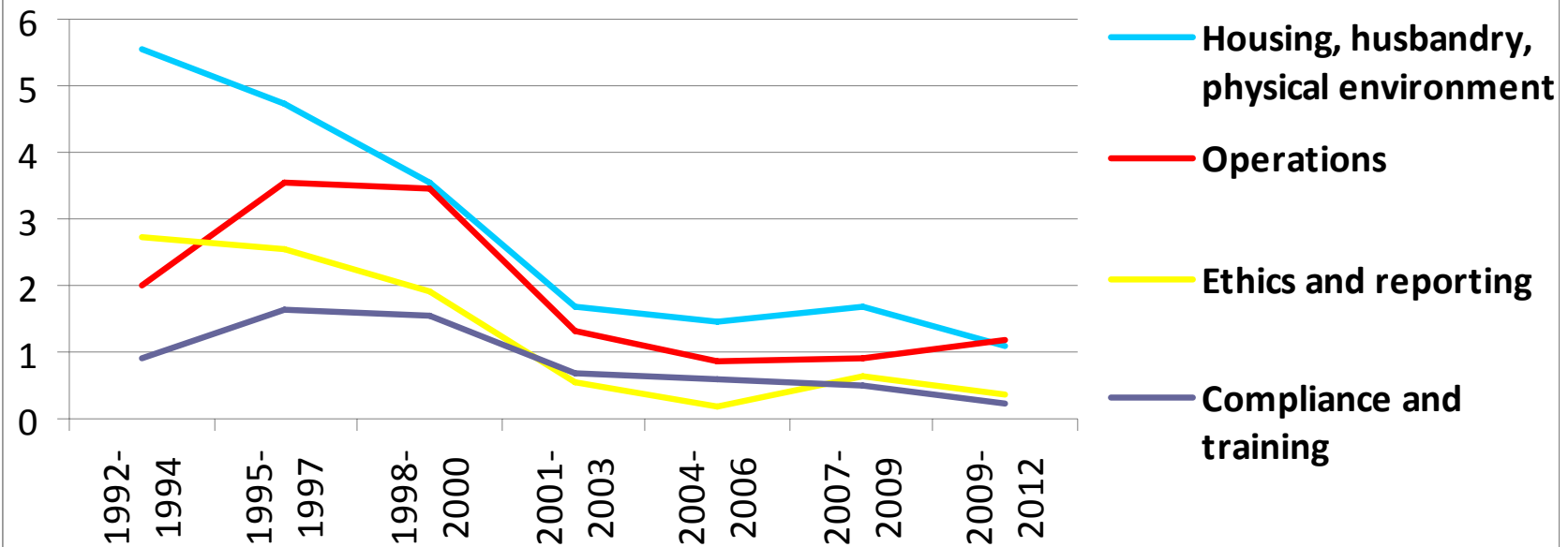
Average number of conditions and recommendations per inspection by type



Average number of conditions per inspection by type



Average number of recommendations per inspection by type



Thank you

- AEC Chairs & Members
- Ethics Officers & Animal Facility Managers
- Scientific Researchers & Research Managers
- Institutions
- ARRPs Members

