

# Estuary Prawn Trawl - Brisbane Waters and Broken Bay

151°15'0"E

151°20'0"E

151°25'0"E

33°24'0"S

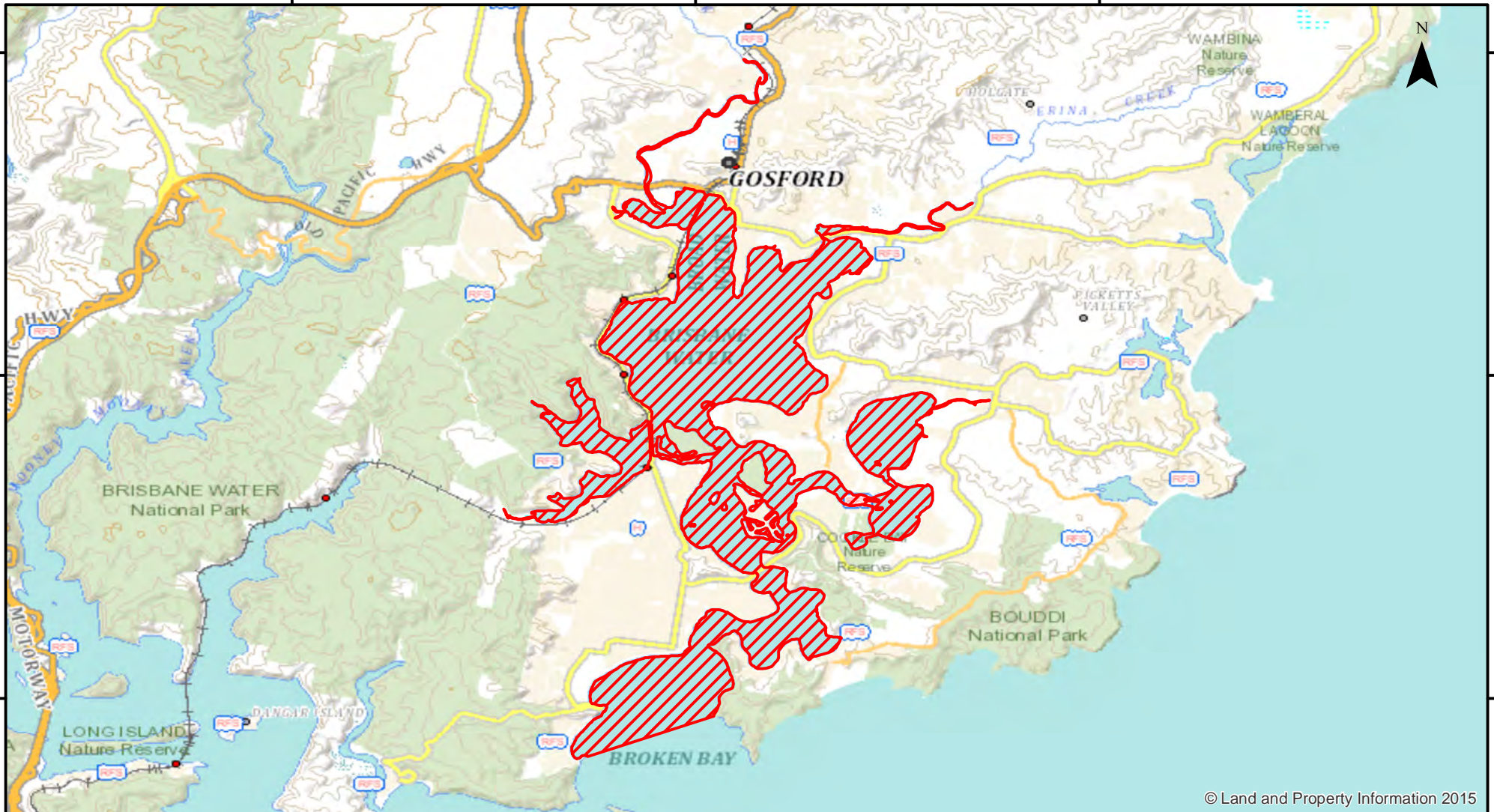
33°24'0"S

33°28'0"S

33°28'0"S

33°32'0"S

33°32'0"S



© Land and Property Information 2015

151°15'0"E

151°20'0"E

151°25'0"E

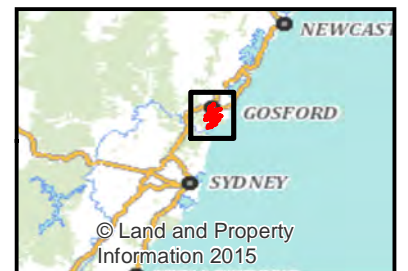
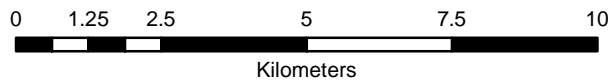


Closure

NSW DPI 19 December 2017  
Coordinates are shown in WGS84

**Closed Waters**  
The whole of the waters of Brisbane Waters and its tributaries and the waters of Broken Bay north of a line drawn from Little Box Head to Green Point.

Notice to Map Users  
Additional closures may apply. Primary Industries and its employees disclaim all liability for any actions or consequences arising from the use of this information. This map is not to be used for navigational purposes as it is indicative only and not guaranteed to be free of error or omission.



© Land and Property Information 2015