

Lobster - Hawkesbury River - Brisbane Water/Broken Bay

151°15'0"E

151°20'0"E

151°25'0"E

33°24'0"S

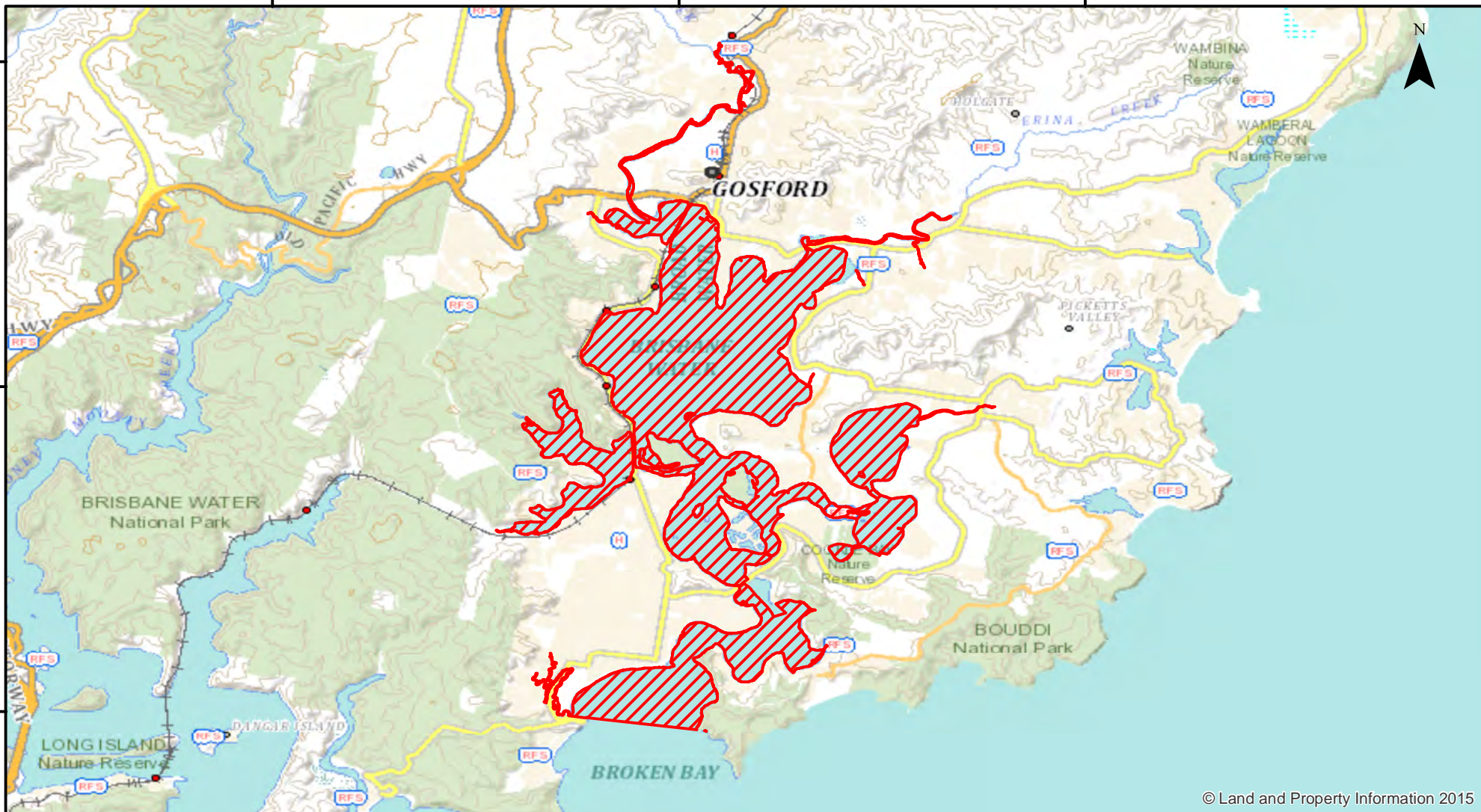
33°24'0"S

33°28'0"S

33°28'0"S

33°32'0"S

33°32'0"S



© Land and Property Information 2015

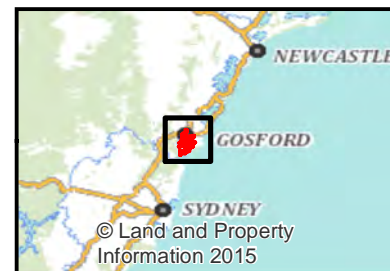
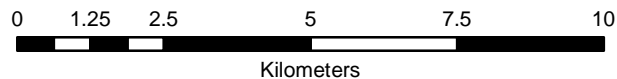


Closure

NSW DPI 18 January 2018
Coordinates are shown in WGS84

Notice to Map Users
Additional closures may apply. Primary Industries and its employees disclaim all liability for any actions or consequences arising from the use of this information. This map is not to be used for navigational purposes as it is indicative only and not guaranteed to be free of error or omission.

Closed Waters
That part of the Hawkesbury River (Brisbane Water/Broken Bay) north of a line drawn between Little Box Head and the northernmost point of Mount Ettalong.



© Land and Property Information 2015