

Wagonga Inlet

150°4'0"E

150°6'0"E

150°8'0"E

36°12'0"S

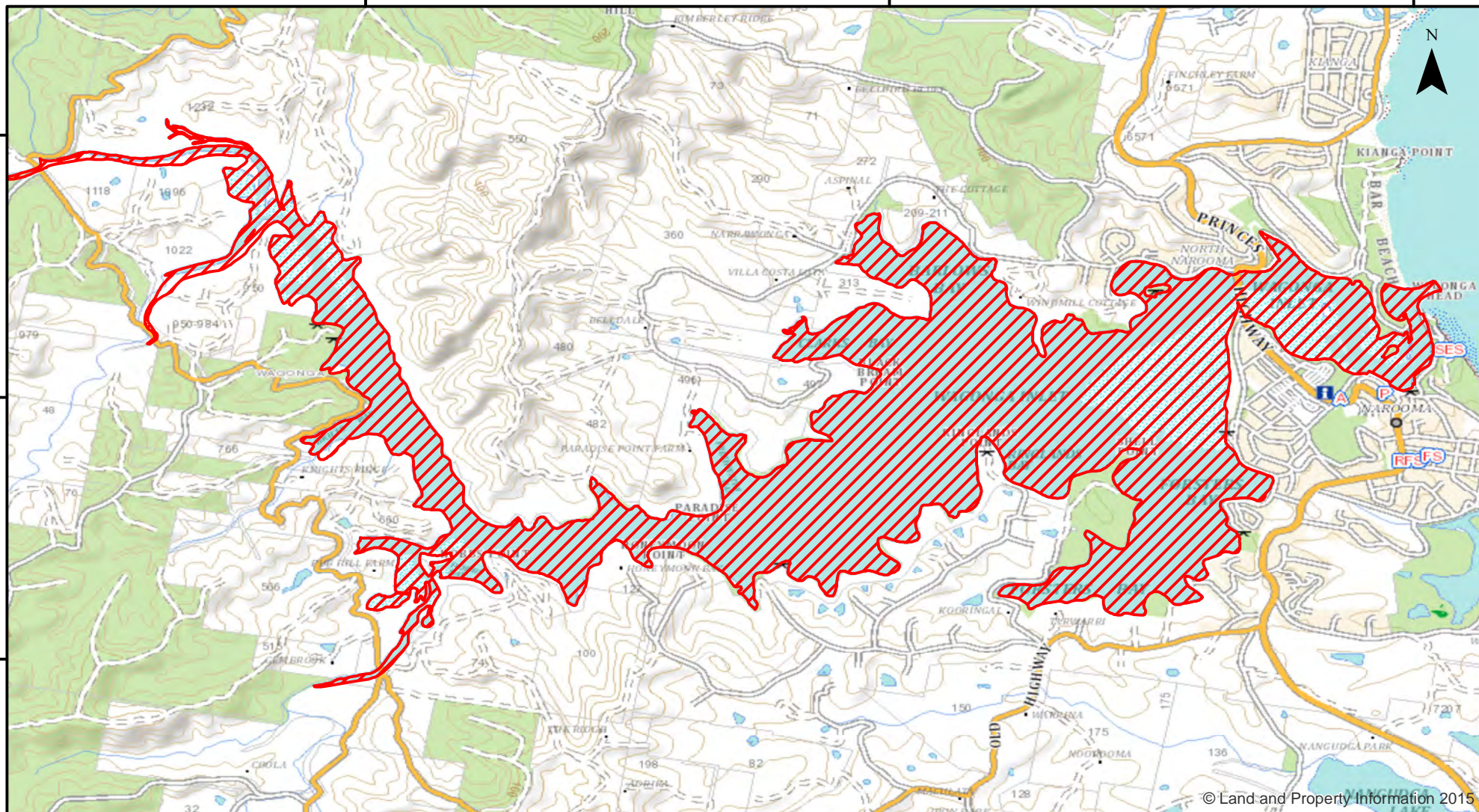
36°12'0"S

36°13'0"S

36°13'0"S

36°14'0"S

36°14'0"S



© Land and Property Information 2015



Closure

NSW DPI 30 May 2018

Coordinates are shown in WGS84

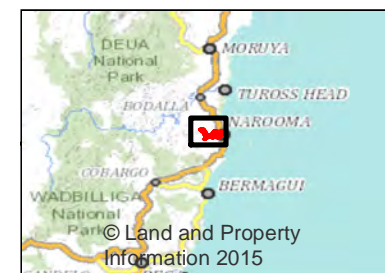
Notice to Map Users
Additional closures may apply. Primary Industries and its employees disclaim all liability for any actions or consequences arising from the use of this information. This map is not to be used for navigational purposes as it is indicative only and not guaranteed to be free of error or omission.

Closed Waters
The whole of the waters of Wagonga Inlet and its tributaries, westward of a line drawn northwest across the entrance from the northernmost extremity of Wagonga Head.

Prohibited Method
A Hoop or Lift net, a Hand-Hauled Prawn net, a Push or Scissors net (prawns), a Crab trap or a Lobster trap.

0 0.4 0.8 1.6 2.4 3.2

Kilometers



© Land and Property Information 2015