

# Lake Macquarie - Traps and Digging

151°20'0"E

151°30'0"E

151°40'0"E

151°50'0"E

32°56'0"S

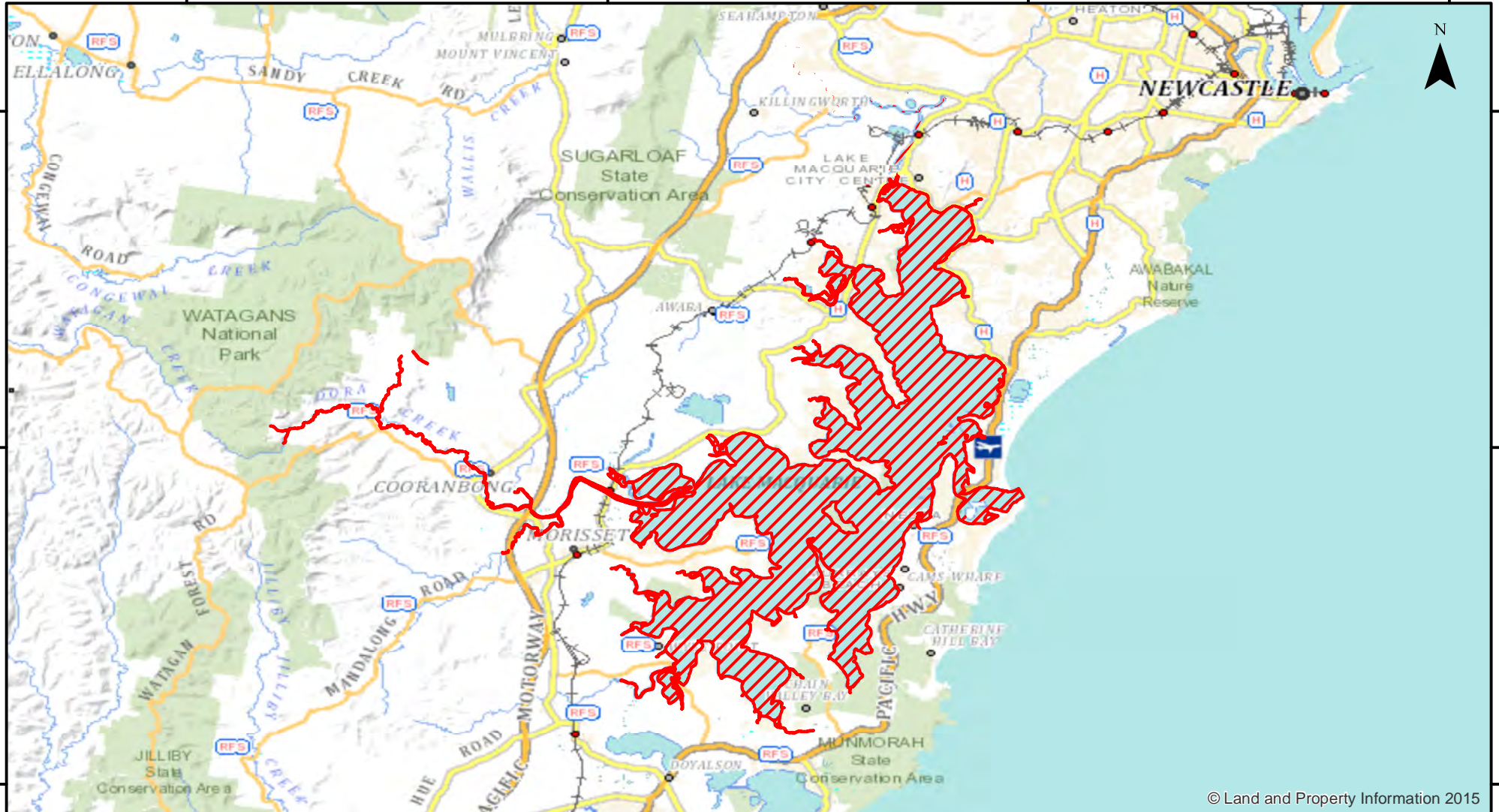
32°56'0"S

33°4'0"S

33°4'0"S

33°12'0"S

33°12'0"S



© Land and Property Information 2015

151°20'0"E

151°30'0"E

151°40'0"E

151°50'0"E



Closure

NSW DPI 20 April 2018

Coordinates are shown in WGS84

Notice to Map Users  
Additional closures may apply. Primary Industries and its employees disclaim all liability for any actions or consequences arising from the use of this information. This map is not to be used for navigational purposes as it is indicative only and not guaranteed to be free of error or omission.

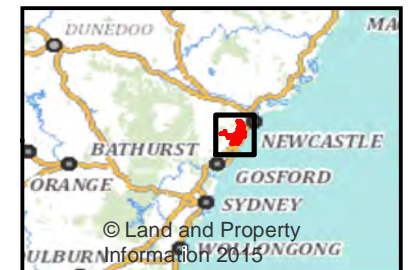
**Closed Waters**  
The whole of the waters of Lake Macquarie and its tributaries, from its confluence with the South Pacific Ocean.

**Prohibited Method**  
A spade or fork and a trap, other than a bait trap.

0 2.25 4.5 9 13.5 18



Kilometers



© Land and Property Information 2015