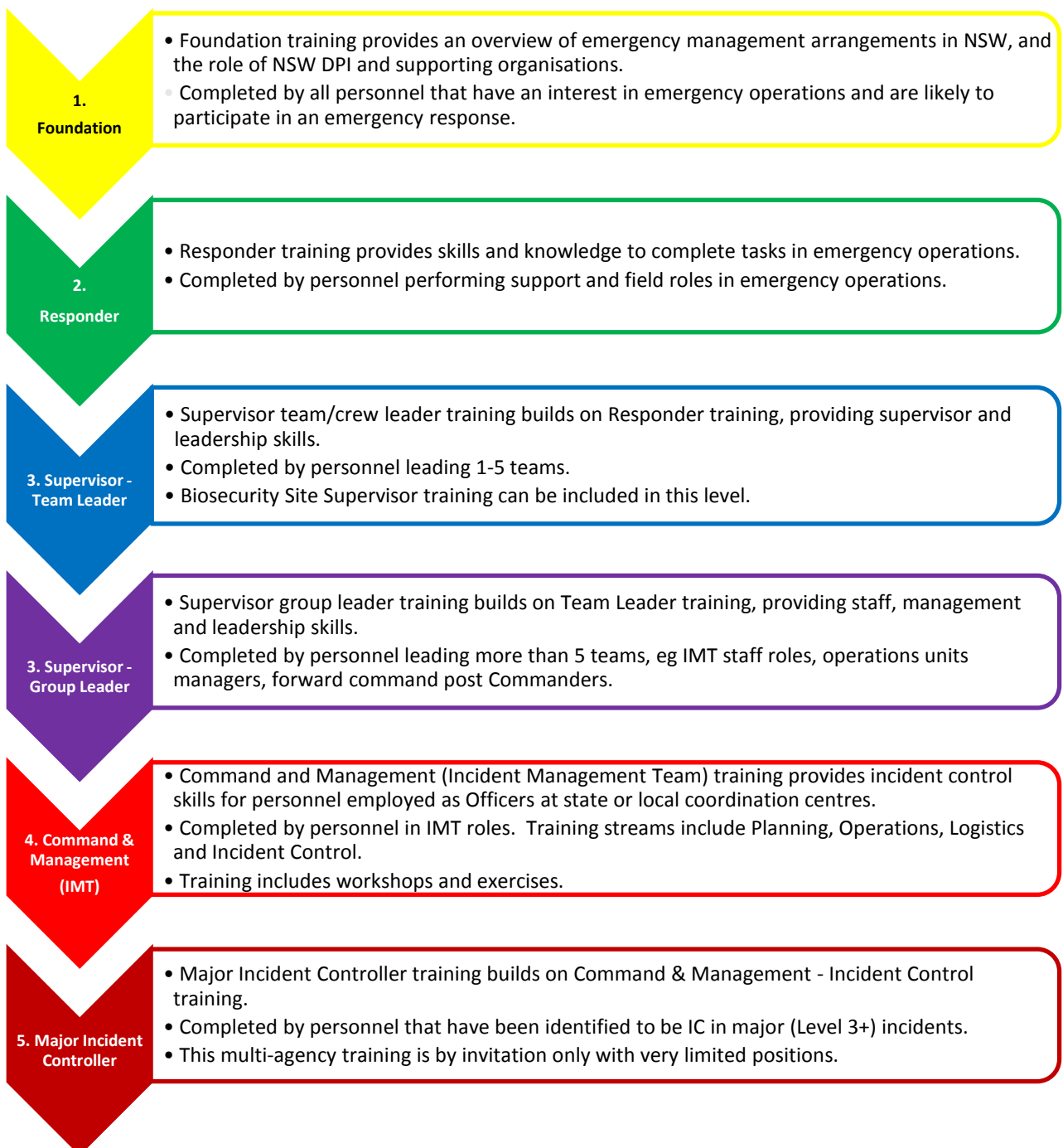


## EMERGENCY MANAGEMENT | LEARNING & DEVELOPMENT

# Training levels

January 2018

Emergency management training is required for all personnel involved in emergency operations. The level of training will vary with the emergency role. The training levels are outlined below.



### More information

Further information regarding training levels, roles and courses can be found at <https://www.dpi.nsw.gov.au/climate-and-emergencies/emergency/management/training>.

EMTrain is the learning management system used by DPI to manage all emergency management training.

### Contact

Mick Armstrong, Learning & Development Coordinator

Emergency Management Unit, Biosecurity & Food Safety

Phone: 02 6391 3207

Email: [emergency.preparedness@dpi.nsw.gov.au](mailto:emergency.preparedness@dpi.nsw.gov.au)

---

© State of New South Wales through the Department of Trade and Investment, Regional Infrastructure and Services, 2018. You may copy, distribute and otherwise freely deal with this publication for any purpose, provided that you attribute the NSW Department of Primary Industries as the owner.

Disclaimer: The information contained in this publication is based on knowledge and understanding at the time of writing (January 2018). However, because of advances in knowledge, users are reminded of the need to ensure that information upon which they rely is up to date and to check currency of the information with the appropriate officer of the Department of Primary Industries or the user's independent adviser.

Published by the Department of Primary Industries.

INT15/63588