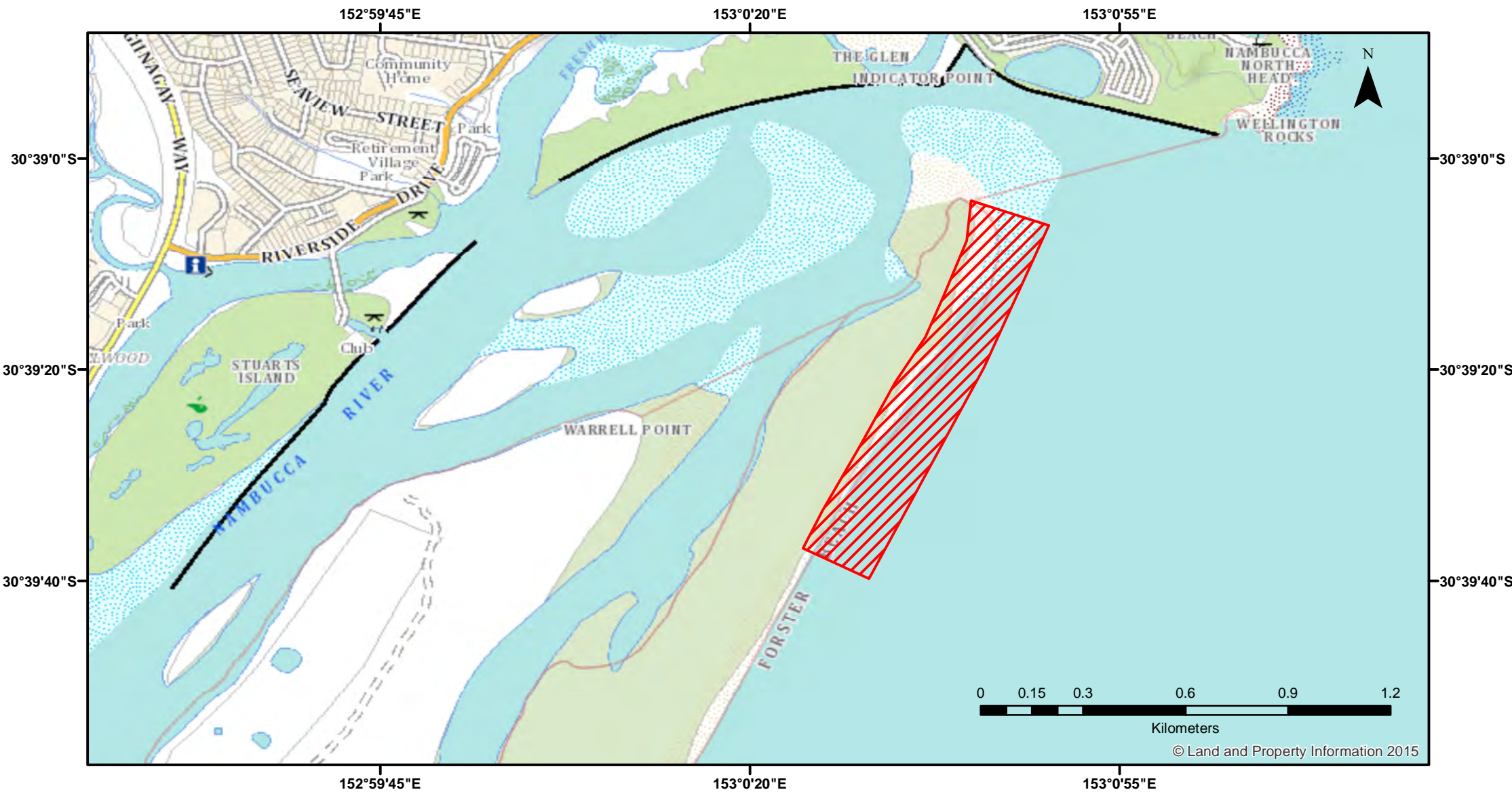


Ocean Hauling - Forster Beach



Closure

NSW DPI 8 February 2018
Coordinates are shown in WGS84

Notice to Map Users
Additional closures may apply. Primary Industries and its employees disclaim all liability for any actions or consequences arising from the use of this information. This map is not to be used for navigational purposes as it is indicative only and not guaranteed to be free of error or omission.

Closed Waters
The whole of the waters adjacent to the shoreline from the southern side of the mouth of the Nambucca River for a distance of 1km travelling generally southwesterly along the shoreline.



© Land and Property Information 2015