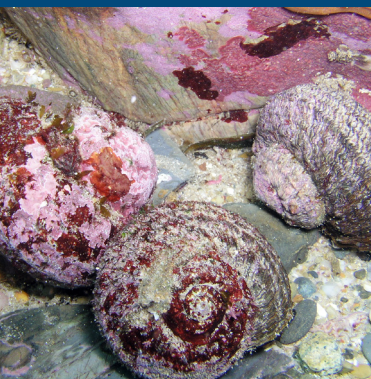
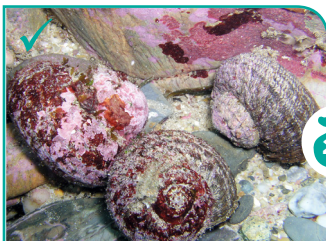


Collecting from rocky shores in the Solitary Islands Marine Park



ONLY THESE 6 SPECIES MAY BE COLLECTED

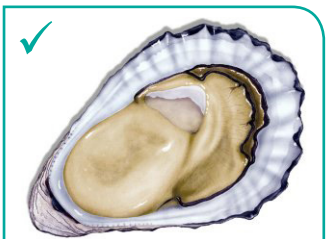


Turban Snails

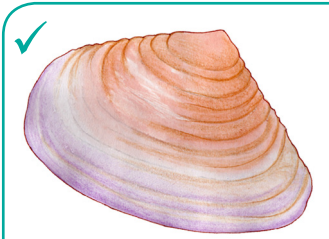
7.5 cm



Periwinkles



Oysters



Pipi

50

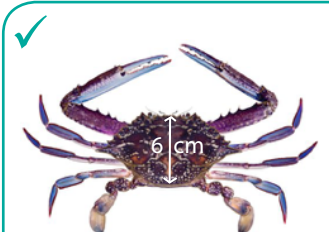
Bait only – do not
remove from beach.



Mudcrab

8.5 cm

5



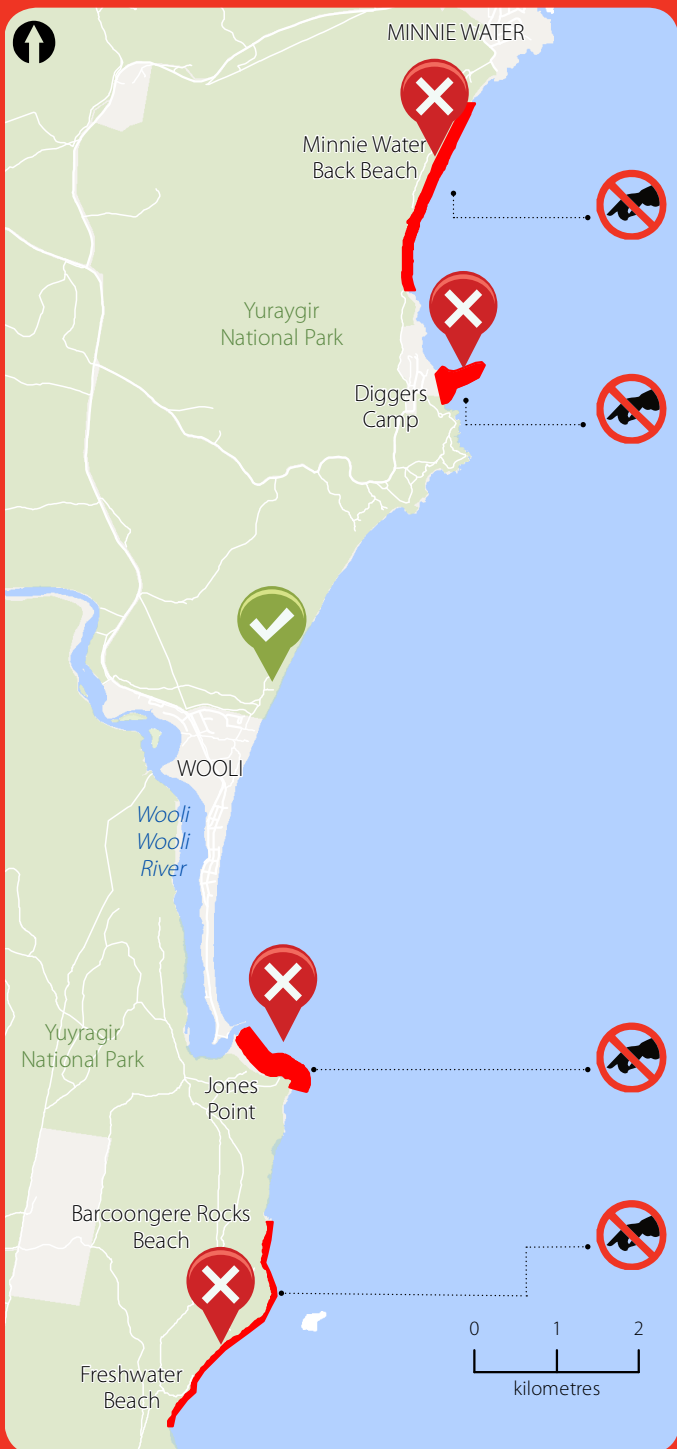
Blue Swimmer Crab

6 cm

10

Shellfish can only be collected by hand



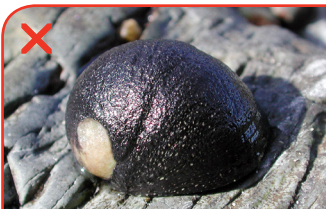


NO COLLECTING IN RED AREAS

DO NOT COLLECT THESE SPECIES FROM ANY AREA



Limpets



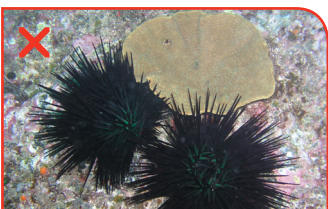
Nerites



Bembicium



Chitons



Sea Urchin



Littorinids



Octopus



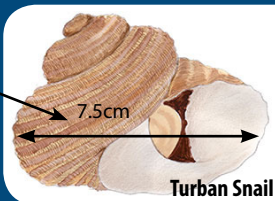
Cunjevoi



Cart-rut Shell



Bait Crab



Bag limit - maximum number of shellfish per person

x cm

minimum legal size that can be taken

A NSW Recreational Fishing Licence Fee must be paid when fishing and collecting shellfish in NSW and can be purchased at www.onegov.nsw.gov.au/new/categories/recreational-fishing or by calling 1300 369 365.



More information is available here
www.dpi.nsw.gov.au/fishing



Download the **NSW DPI FishSmart App** for all the essential information you need to fish in NSW

- Illegal fishing can threaten the precious values of the marine park and attract heavy fines.
- For more information on the Solitary Islands Marine Park, visit www.dpi.nsw.gov.au/solitaryislandsmarinepark or call 02 6691 0600.

© State of New South Wales through Department of Industry 2018. You may copy, distribute and otherwise freely deal with this publication for any purpose, provided that you attribute the Department of Industry as the owner. The information contained in this publication is based on knowledge and understanding at the time of writing (July 2018) and may not be accurate, current or complete. The State of New South Wales (including the NSW Department of Industry), the author and the publisher take no responsibility, and will accept no liability, for the accuracy, currency, reliability or correctness of any information included in the document (including material provided by third parties). Readers should make their own inquiries and rely on their own advice when making decisions related to material contained in this publication.

www.dpi.nsw.gov.au