



Department of
Primary Industries

NSW Commercial Fisheries Reform

Agenda Item 8: Setting the ITCALs

Important note:

- The methodology for setting the ITCALS remains some way from being finalised
- Changes to the methodology will in some cases result in significant changes to the quota available per share
- The Working Group's assistance is required to refine the methodology and develop appropriate ITCALS for relevant species / sectors

ITCAL decision rules

Standard approach adopted by DPI (species quota)

Step 1: Set industry-wide ITCAL

- Average of 15 year catch (97/98 - 11/12)

Step 2: Apportion industry-wide ITCAL amongst share classes

- Total catches by sector over 3 years (9/10-11/12)

Note: it is proposed that share class ITCALS will be used to:

- Limit total catches if quota managed
- Trigger a review if landings in other sectors exceed the ITCALS

ITCAL decision rules

Standard approach adopted by DPI (effort quota)

Set sector specific ITCAL (one step approach)

- Average annual effort level
- Using new logbook data (3 years 9/10 - 11/12)

Note:

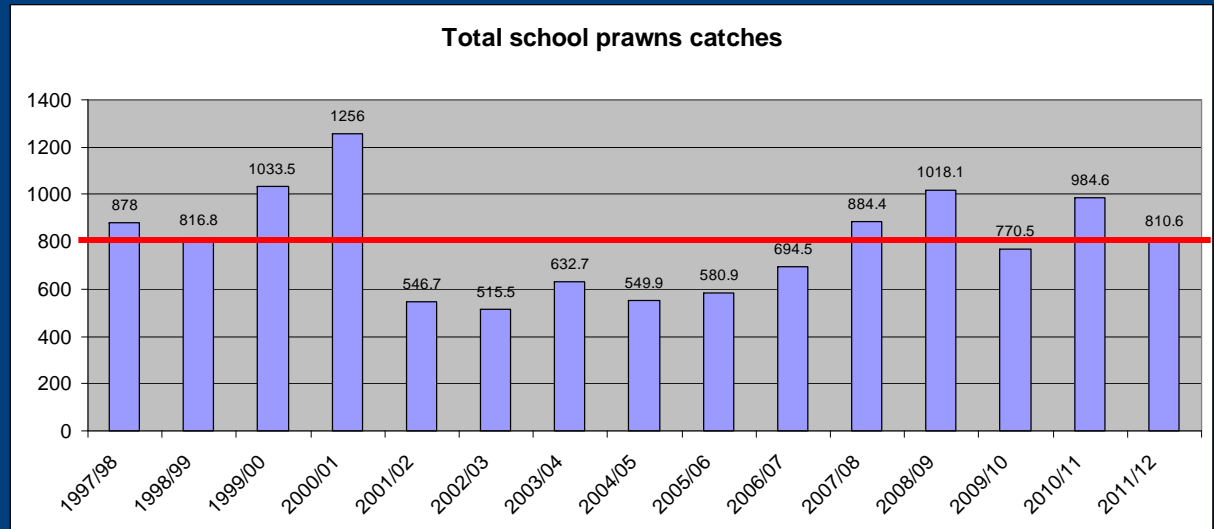
- Effort ITCALs will be used to limit total effort in the sectors concerned
- The species ITCALs (see previous slides) will be used to trigger a review if landings in any sector exceed the relevant ITCALs

EPT school prawn ITCALs

Step 1: set industry-wide ITCAL

	Total
1997/98	878
1998/99	816.8
1999/00	1033.5
2000/01	1256
2001/02	546.7
2002/03	515.5
2003/04	632.7
2004/05	549.9
2005/06	580.9
2006/07	694.5
2007/08	884.4
2008/09	1018.1
2009/10	770.5
2010/11	984.6
2011/12	810.6

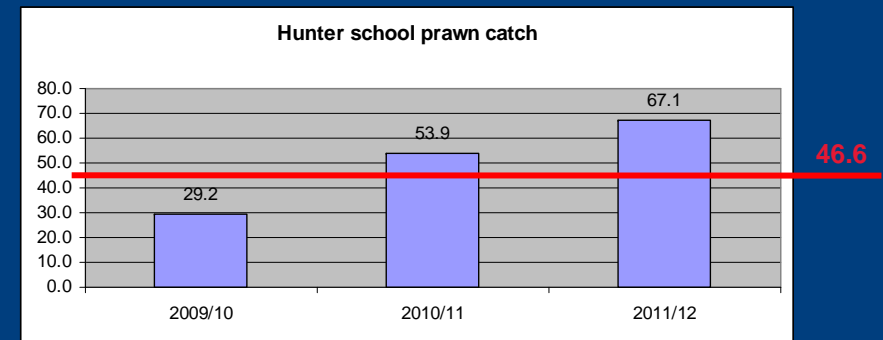
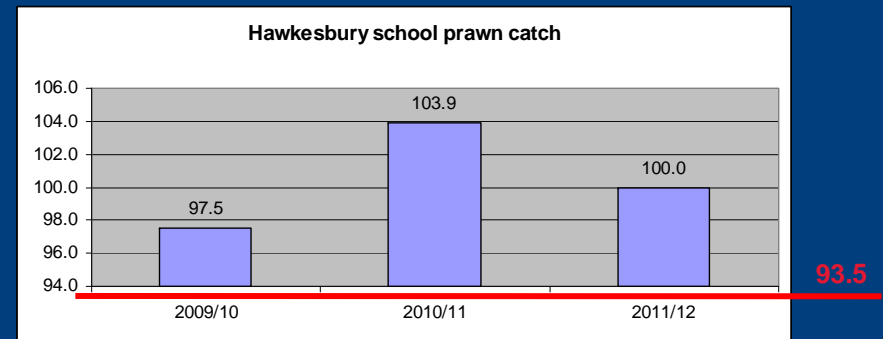
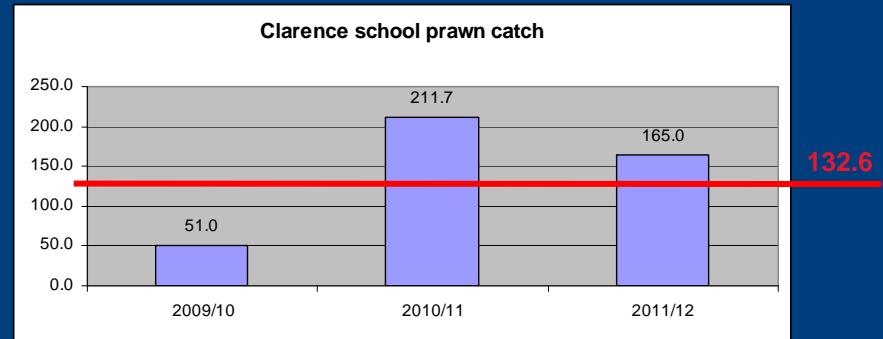
Industry ITCAL (ave) **798.2**



EPT school prawn ITCALs

Step 2: apportion industry-wide ITCAL to relevant sectors

	Clarence	Hawkesbury	Hunter
2009/10	51.0	97.5	29.2
2010/11	211.7	103.9	53.9
2011/12	165.0	100.0	67.1
Grand totals	427.7	301.4	150.2
% of Industry Grand total	16.6	11.7	5.8
Sector ITCALs	132.6	93.5	46.6

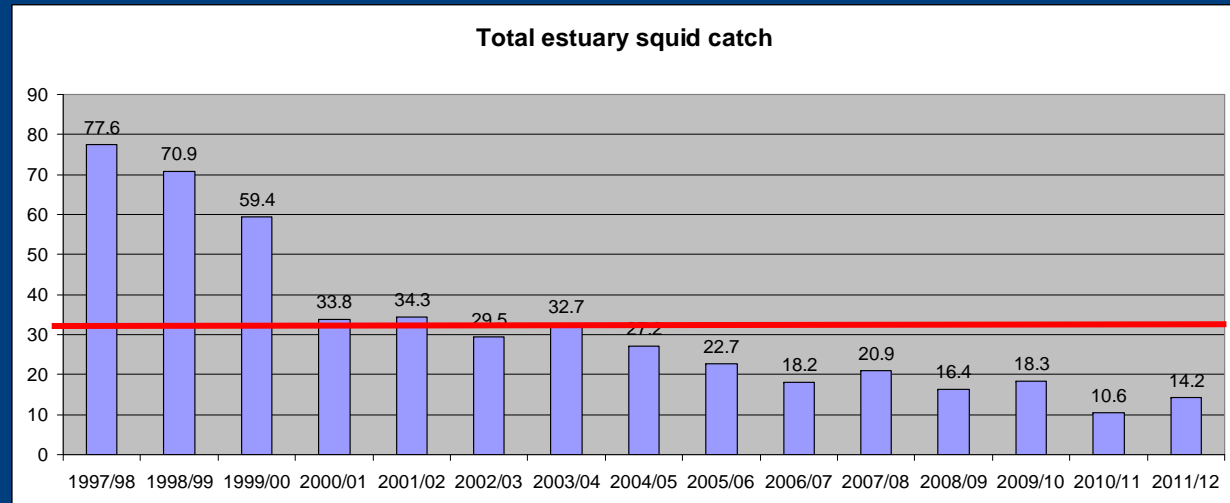


Hawkesbury EPT squid ITCAL

Step 1: set industry-wide ITCAL

	Total
1997/98	77.6
1998/99	70.9
1999/00	59.4
2000/01	33.8
2001/02	34.3
2002/03	29.5
2003/04	32.7
2004/05	27.2
2005/06	22.7
2006/07	18.2
2007/08	20.9
2008/09	16.4
2009/10	18.3
2010/11	10.6
2011/12	14.2

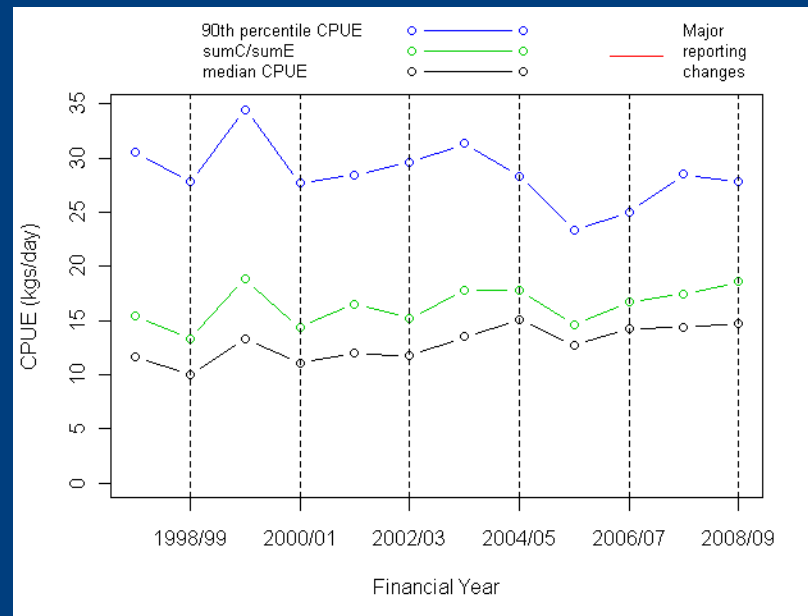
Industry ITCAL (ave) **32.4**



Hawkesbury EPT squid ITCAL

Is there a sustainability issue...?

	EG	EPT
1997/98	31.4	46.2
1998/99	24.8	46.1
1999/00	21.9	37.5
2000/01	9.6	24.1
2001/02	2.7	31.6
2002/03	1.6	27.9
2003/04	1.3	31.4
2004/05	1.9	25.2
2005/06	1.2	21.5
2006/07	1.2	17
2007/08	0.6	20.2
2008/09	0.8	15.6
2009/10	0.6	17.8
2010/11	0.7	9.9
2011/12	0.1	14

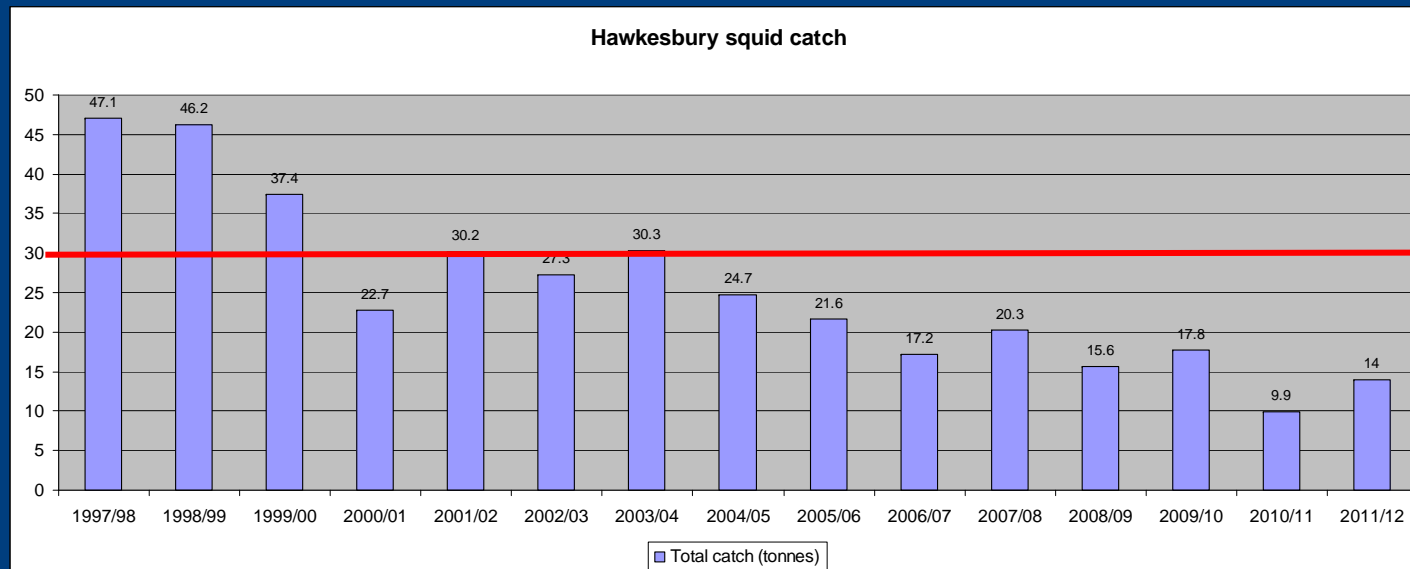


Commercial Catch Per Unit Effort Information of Broad Squid (Broad, Pencil, Gould's and Bottle squid) Harvested by the NSW EPT Fishery

Hawkesbury EPT squid ITCAL

Step 2: apportion industry-wide ITCAL to relevant sectors

	Clarence	Hawkesbury	Hunter
2009/10	0	17.8	0.3
2010/11	0	9.9	0
2011/12	0	14	0.1
Grand totals	0	41.7	0.4
% of Industry Grand total	0.0	96.8	0.9
Sector ITCALs	0.0	31.4	0.3



EPT day ITCALs

Remember: One step process

	Clarence	Hawkesbury	Hunter
2009/10	811	2637	522
2010/11	2218	2370	950
2011/12	1563	2113	868
Average 3 yrs	1,531	2,373	780

