

Returning Fish to the Namoi

the Namoi Aquatic Habitat Initiative



The Namoi catchment is home for many important native fish species, but some species are now rarely seen because their habitat has been degraded.

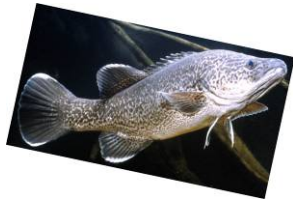
Habitat degradation places significant pressure on native fish species, with silver perch, Murray cod, the western populations of olive perchlet and purple spotted gudgeon, and the river snail *Notopala sublineata* all now listed as threatened species.

The Namoi CMA and NSW DPI are working together to restore aquatic habitat in the Namoi and return fish to the waterways of the catchment.

The Namoi Aquatic Habitat Initiative has two strategies:

- Establishing a demonstration reach to showcase techniques to restore habitat and encourage native fish back into the waterways.
- Remediating or removing priority barriers so that fish can move freely along the waterways.

More information is available at www.dpi.nsw.au



Above Murray cod, purple spotted gudgeon .Above and right: aquatic habitat at Boggabri, Macdonald River and Peel River

Establishing a *demonstration reach*

A demonstration reach is a section of waterway that demonstrates techniques that landholders can use to restore and protect aquatic and riparian habitat.

These techniques can include:

- Planting local native vegetation on stream banks
- Introducing large woody debris (snags) into the water
- Managing environmental flows to suit native fish
- Restoring deep holes in the stream bed
- Controlling introduced species
- Remediating barriers to enable native fish to move freely along streams

Most or all of these techniques will be used in the Namoi demonstration reach. Site selection and on ground works will be done in consultation with local community groups, to ensure a sense of community ownership and support for the demonstration reach.





*Above: silver perch, olive perchlet.
Above and right: various fish
barriers.*

Remediating Fish Passage Barriers

Road crossings and weirs stop native fish moving freely up and down streams, which they need to do to complete their lifecycle and access preferred aquatic habitat.

The Namoi Aquatic Habitat Initiative will reduce the impact of barriers on native fish by remediating fish passage at priority sites.

Site selection will involve reviewing existing data and consulting with stakeholders to decide which barriers have the most impact on native fish movement and how they should be remediated.

Remediation options include:

- Removing redundant road crossings or weirs
- Replacing crossings with 'fish friendly' designs such as culverts or bridges
- Constructing fishways
- Removing debris and sediment

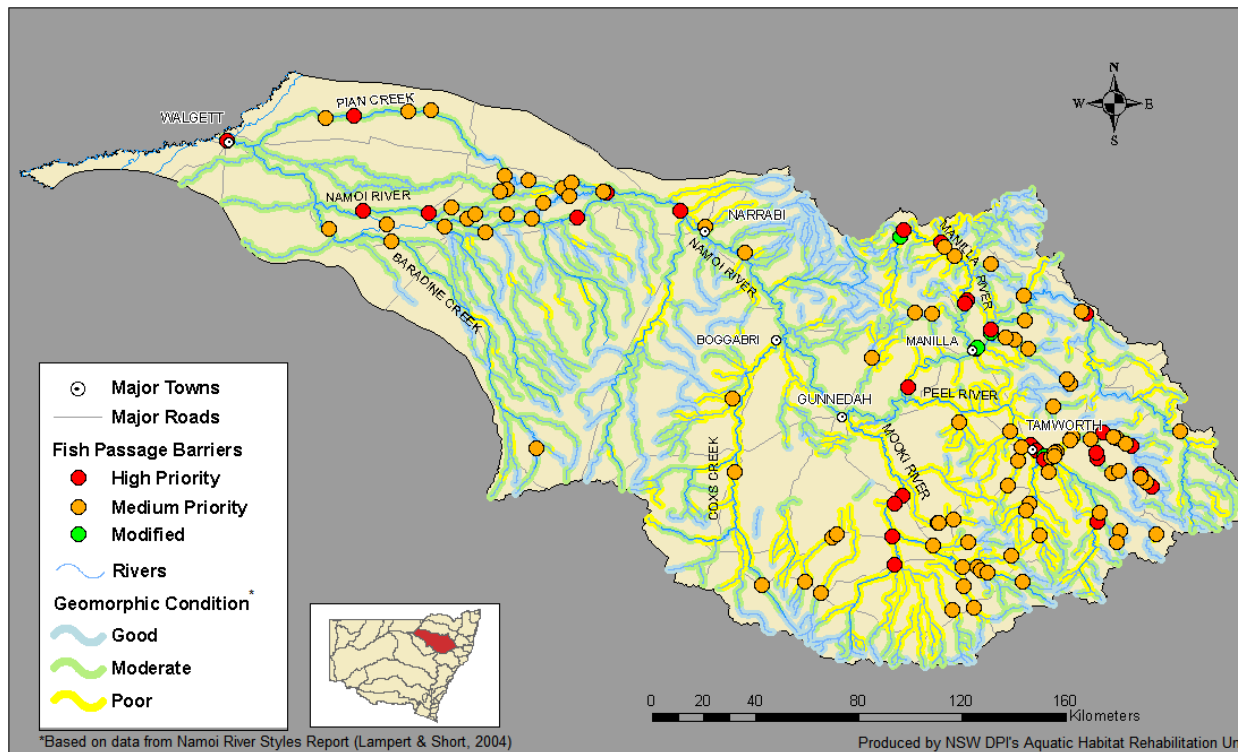


To get involved in improving the Namoi catchment and express your interest in the Namoi Aquatic Habitat Initiative contact either Milly Hobson or Anthony Townsend on (02) 6765 4243.

The Namoi Aquatic Habitat Initiative will be carried out by NSW DPI on behalf of the Namoi CMA and is funded by the Natural Heritage Trust. Over \$1 million will be invested in improving aquatic habitat during the next 18 months as part of the Initiative.

For more information about aquatic habitat rehabilitation projects please visit www.fisheries.nsw.gov.au/aquatic_habitats or subscribe to Newstreams, the free NSW DPI bi-monthly e-newsletter by emailing the editor at rebecca.lines-kelly@dpi.nsw.gov.au.

Fish Images © Gunther Schmida



NSW DEPARTMENT OF PRIMARY INDUSTRIES

