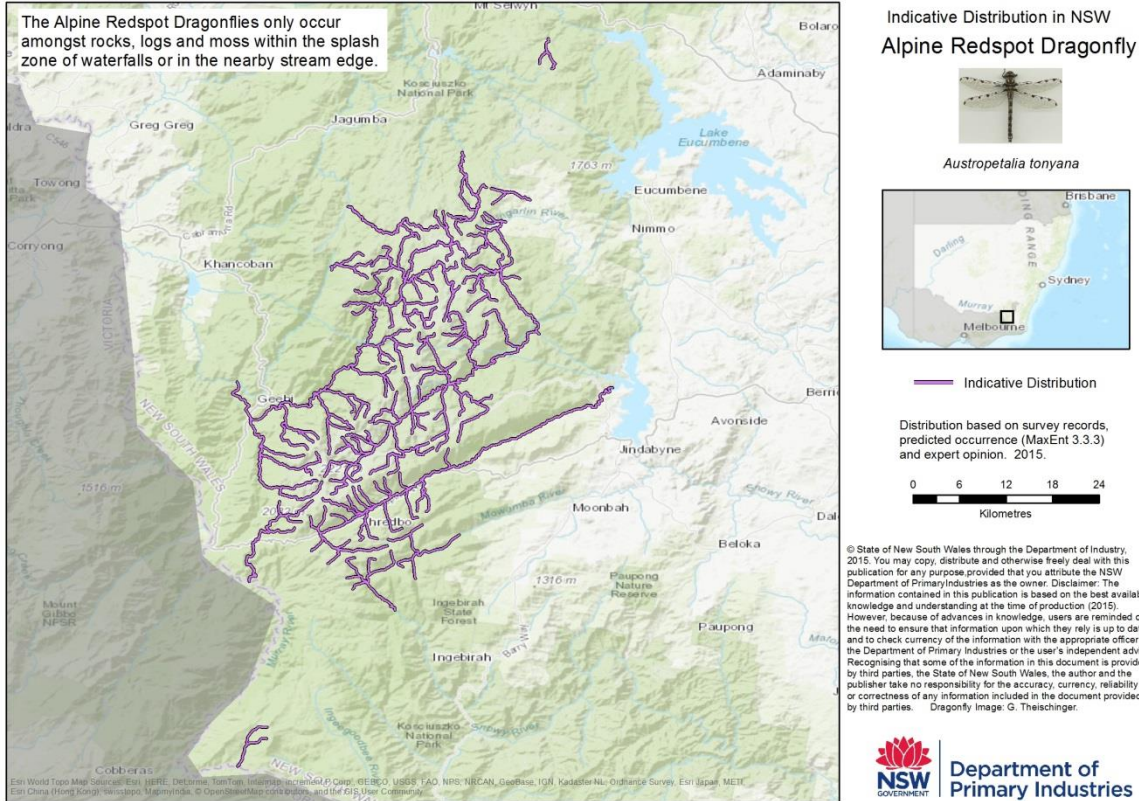


Dataset: Alpine Redspot Dragonfly Indicative Distribution in NSW



Dataset/Product Description

The Alpine Redspot Dragonfly (*Austropetalia tonyana*) is a moderate-sized dragonfly. The larvae grow to 32-35mm long and adults grow to 70-80mm long. It is a habitat specialist, occurring only within very specific geographic locations. It is naturally rare, with few recordings of the species in New South Wales since the 1950s. In NSW, the Alpine Redspot Dragonfly is restricted to mountainous regions below 35°S that reach above 600 – 1,800 metres above sea level. Individuals have extremely specific habitat requirements in that they only occur amongst rocks, logs and moss within the splash zone of waterfalls or in the nearby stream edge. They are an endangered species - <https://www.dpi.nsw.gov.au/fishing/species-protection/conservation/what-current/vulnerable-species/alpine-redspot-dragonfly>. The methods used to create the predicted current distribution of Alpine Redspot Dragonfly are described fully in: NSW Department of Primary Industries (2015), NSW Fish Community Status 2015 – Final Report. All available records of the species were collated and assessed for accuracy. For current distribution, only records after 1 January 1994 were used. Within the framework of the Australian Hydrological Geospatial Fabric V2 surface hydrology network, the records were associated with attributes from the National Environmental Stream Attributes Database and River Styles® geomorphology. The Australian Hydrological Geospatial Fabric V2 surface hydrology

NSW Spatial Dataset Profile

	<p>network (Geofabric) is a fully connected and directed stream network based a 9 second DEM. It allocates a unique stream segment number to each river reach in Australia. The Environmental Attributes Database is a set of lookup tables supplying attributes describing the natural and anthropogenic characteristics of the stream and catchment environment that was developed by the Australian National University (ANU) in 2011 and updated in 2012. The data is supplied as part of the supplementary Geofabric products which is associated with the 9 second DEM derived streams and the National Catchment Boundaries based on 250k scale stream network. 30 Stream variables were assessed for the modelling.</p> <p>River Styles® provides a high resolution categorical classification of river character within a nested hierarchy of criteria based on valley setting, channel planform, geomorphic units, and bed material. The NSW Office of Water compiled a spatial dataset of River Styles® classifications for a large number of the waterways of NSW. From 65 River Style® categories we generated two new fields representing Planform (34 categories) and Substratum (8 categories) for each stream segment. River Style® planform and substratum categories were then assigned to each Geofabric segment.</p> <p>MaxEnt 3.3.3 is a widely used species distribution modelling program that utilises presence records to generate probabilities of occurrence based on a suite of environmental variables quantified across the area of interest. It was used to model the current geographic distribution of each listed threatened freshwater aquatic species or population. We utilised logistic output to plot the predicted distribution of each species. This output equates to a probability that the species will be observed in each river reach, given the environmental conditions that exist there relative to the environmental conditions where the species is known to occur. For this mapping, above 33% probability was considered predicted presence. In addition, predicted separate populations were connected by manual interpretation. The predicted values for each river reach were converted from the Geofabric framework to the higher resolution 2013 NSW Strahler Stream Order Hydroline.</p>
<p>Dataset Uses</p>	<p>The dataset has a number of primary functions including but not limited to;</p> <ul style="list-style-type: none"> • spatially representing the status of fish communities at river reach scale across NSW • providing additional support to strategic planning frameworks to ensure they effectively integrate biodiversity considerations into planning and decision making processes
<p>Current Status</p>	<p>The Alpine Redspot Dragonfly Distribution in NSW dataset was produced in addition to the NSW Fish Community Status 2015.</p>
<p>Standards & Specifications</p>	<p>ANZLIC Metadata Profile: An Australian/New Zealand Profile of AS/NZS ISO 19115:2005, Geographic information – Metadata</p>

NSW Spatial Dataset Profile

Access and Licensing	<p>The Alpine Redspot Dragonfly Distribution in NSW is authored by the Department of Industry, Skills and Regional Development is licensed under a Creative Commons Attribution-NonCommercial-NoDerivatives 4.0 International License.</p> <p>The Department of Industry, Skills and Regional Development asserts the right to be attributed as author of the Eastern Freshwater Cod Distribution in NSW in the following manner:</p> <p>© State of New South Wales through Department of Industry, Skills and Regional Development 2015.</p> <p>Any derived products which are created will be required to clearly mark the date that any extractions from the NSW Industry's Corporate Spatial Databases occurred.</p> <p>All Intellectual Property which is owned by NSW Industry should only be loaded on any external cloud platforms if NSW Industry's Intellectual Property (IP) remains unchanged, maintained and preserved.</p>
Metadata	<p>See : NSW Department of Primary Industries (2015), NSW Fish Community Status 2015 – Final Report https://www.dpi.nsw.gov.au/_data/assets/pdf_file/0007/669589/fish-communities-and-threatened-species-distributions-of-nsw.pdf</p>
Updates	<p>As required.</p>
Custodian Agency & Contact	<p>Karen Danaher Fisheries Manager, Spatial Planning Department of Primary industries NSW Trade and Investment</p> <p>Address: 1243 Bruxner Highway, Wollongbar NSW 2477 Ph: 02 6626 1325 Email: karen.danaher@dpi.nsw.gov.au</p>
Aggregator(s)	
Distributor(s)	<p>Karen Danaher Fisheries Manager, Spatial Planning Department of Primary industries NSW Trade and Investment</p> <p>Address: 1243 Bruxner Highway, Wollongbar NSW 2477 Ph: 02 6626 1325 Email: karen.danaher@dpi.nsw.gov.au</p>
Additional Comments	