



NSW Guide
www.dpi.nsw.gov.au

FREE!

Go Fishing



Featured Location:

Jervis Bay

Sport Fishing

Hot Spot!



Recreational
Fishing Trusts



BUILDING A HEALTHY
FISHING FUTURE

Foreword from NSW DPI



Overview	3
Location Map	4
Key Target Species	6
Other Species	9
Catch & Release Info	9
Rock Fishing Safety	10

IMAGES: Cover image: NSW DPI; P10 images: Greg Finney. Fish illustrations: Pat Tully. All other images: NSW DPI.

JTN 16378 10/2023

This fishing location guide is produced by the NSW Department of Primary Industries (NSW DPI) LMB 3020 Nowra NSW 2541, for and on the behalf of the state of New South Wales. This guide is produced using funds from the Recreational Fishing Trust as part of our commitment to providing recreational fishers with comprehensive, user-friendly information.

© State of New South Wales through Department of Regional NSW [2023].

Disclaimers

This publication may provide assistance or information but NSW DPI and its employees do not guarantee the publication is without flaw or is wholly appropriate for any particular purpose and therefore disclaims all liability for any error, loss or other consequence which may arise from relying on any information in this publication. This publication is a guide only, it does not replace the *Fisheries Management Act 1994* or other acts and statutory rules applying to or affecting recreational fishing. It is a summary of laws and regulations at the time of publication and cannot be used as a defence in a court of law.

Recreational fishing regulations may change during the lifetime of this publication. It is the responsibility of fishers to ensure they are acting within the law at all times. Check regulations with your local NSW DPI fisheries office or www.dpi.nsw.gov.au/fisheries.

The product trade names in this publication are supplied on the understanding that no preference between equivalent products is intended and that the inclusion of a product name does not imply endorsement by the department over any equivalent product from another manufacturer.

No material matter in this publication may be reproduced, stored in a retrieval system, or transmitted in any form by electronic or mechanical means, photocopying or recording without the written permission of NSW DPI.

Throwing a line in at a new spot always makes for a great fishing adventure, whether it's on a family holiday or just somewhere new close to home. No matter your fishing expertise, NSW boasts a wide range of fish species and great places to catch them, including in our many inland rivers, impoundments and streams to the productive estuaries, lakes, beaches and rocky headlands on the NSW coast. There are also many inshore and offshore fishing opportunities from your boat or if using one of the many experienced charter fishing services available.

There are many reasons to go fishing, including to unwind and relax, spend time with family and friends, enjoy nature and of course to catch a tasty meal of fresh fish. Over a million people in NSW enjoy this fantastic lifestyle and the great news is that you are never too old or young to take up fishing so get out there and give it a go! Getting into fishing is easy. If you don't know where to start, just head into your local tackle store where the friendly staff can provide tips on tackle, bait and techniques plus point you to a safe, convenient spot to throw a line in.

NSW DPI has developed these *Go Fishing* guides as a snapshot of popular NSW fishing locations in both fresh and saltwater to help improve your recreational fishing experiences. For more information on other locations, fish species, size and bag limits and permitted gear not listed in these guides, visit the NSW DPI website or download the **FishSmart App** from the App store on your Android or iPhone.



Overview

Sydney ●

● Jervis Bay

Jervis Bay Marine Park (JBMP) is located on the NSW coast about 2.5 hours' drive south of Sydney. It's a very popular holiday destination with diverse fishing options ranging from estuary, beach and rock through to sport and game fishing.

The park covers about 100km of coastline from Kinghorn Point south to Bherwerre Beach encompassing the township of Currarong, the whole of Jervis Bay itself and Wreck Bay.

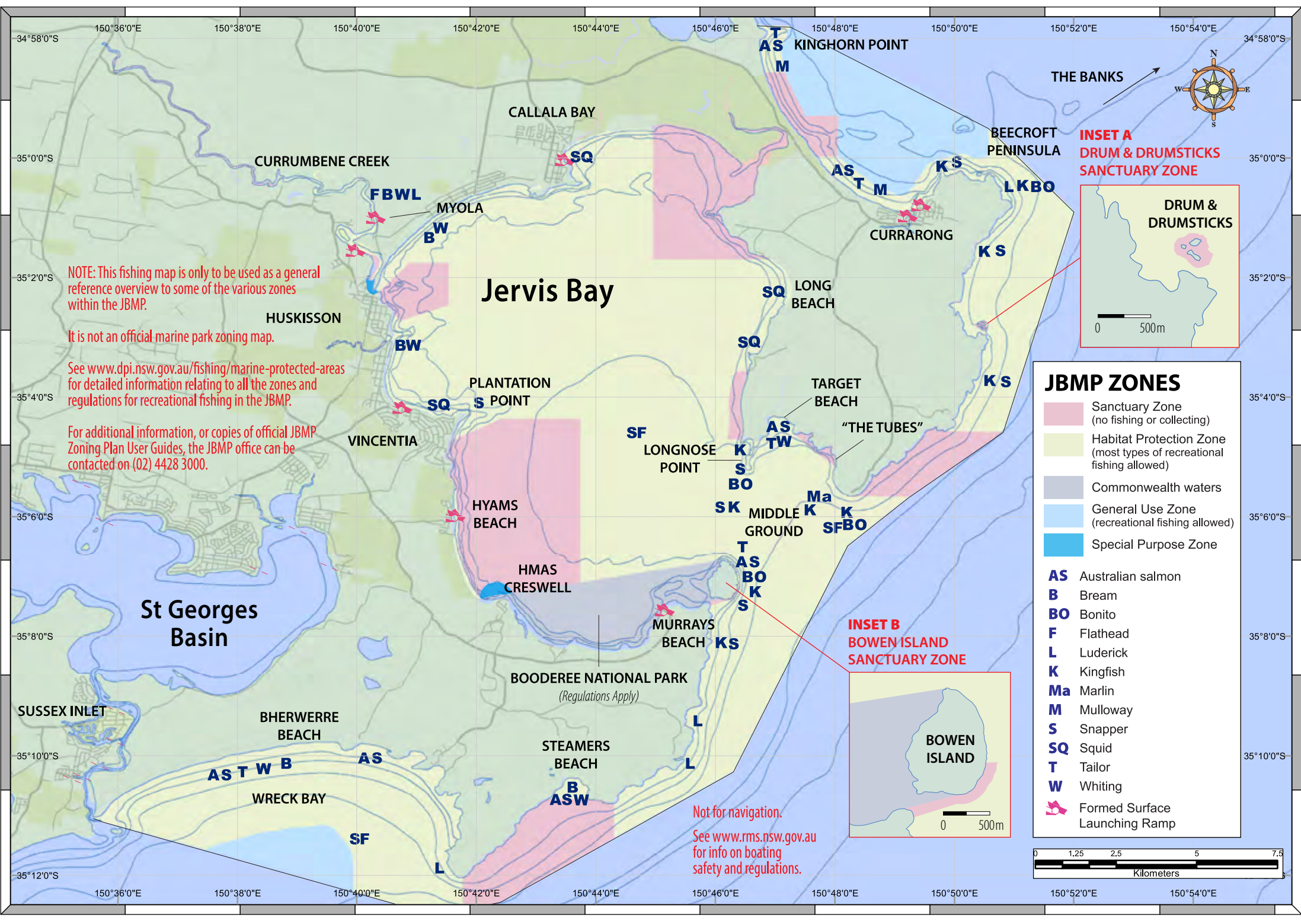
As one of six marine parks in NSW waters, the JBMP features a range of zones allowing for different activities.

About 80 per cent of JBMP is made up of "habitat protection zones" and "general purpose zones", both of which permit recreational fishing. Other areas include "sanctuary zones" where no fishing is allowed.

It is important to familiarise yourself with the various zones before heading out to wet a line in the JBMP as penalties apply for fishing in sanctuary areas.

Detailed zoning maps are available at www.dpi.nsw.gov.au/fishing/marine-protected-areas, the JBMP office in Huskisson and at local tackle shops, NSW Fisheries offices, tourist centres and service stations. Zoning maps for NSW marine parks are available for free on smart phones and tablets from the Avenza Maps app Store (search for DPI Fisheries) and as part of the NSW DPI FishSMart app. Call the JBMP office on (02) 4428 3000 for more information about fishing regulations in the JBMP.

continued on page 6



NOTE: This fishing map is only to be used as a general reference overview to some of the various zones within the JBMP.

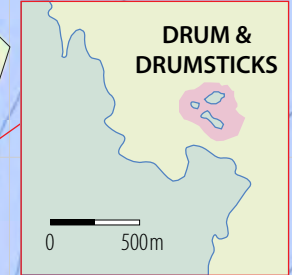
It is not an official marine park zoning map.

See www.dpi.nsw.gov.au/fishing/marine-protected-areas for detailed information relating to all the zones and regulations for recreational fishing in the JBMP.

For additional information, or copies of official JBMP Zoning Plan User Guides, the JBMP office can be contacted on (02) 4428 3000.

Not for navigation.
See www.rms.nsw.gov.au for info on boating safety and regulations.

INSET A
DRUM & DRUMSTICKS
SANCTUARY ZONE

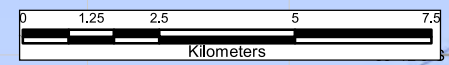
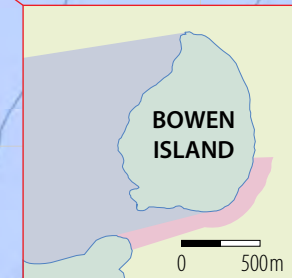


JBMP ZONES

- Sanctuary Zone (no fishing or collecting)
- Habitat Protection Zone (most types of recreational fishing allowed)
- Commonwealth waters
- General Use Zone (recreational fishing allowed)
- Special Purpose Zone

- AS** Australian salmon
- B** Bream
- BO** Bonito
- F** Flathead
- L** Luderick
- K** Kingfish
- Ma** Marlin
- M** Mulloway
- S** Snapper
- SQ** Squid
- T** Tailor
- W** Whiting
- Formed Surface Launching Ramp

INSET B
BOWEN ISLAND
SANCTUARY ZONE





continued from page 3

The JBMP is centered on Jervis Bay, known by locals as “JB” or simply “The Bay”. JB is fringed by a number of small towns and villages including Callala Bay, Callala Beach, Myola, Woollamia, Huskisson, Vincentia and Hyams Beach.

The southern edge of the bay is Commonwealth territory and is home to a naval training facility known as HMAS Creswell. This area of JB forms the Booderee National Park (see www.parksaustralia.gov.au/booderee for specific fishing regulations relating to Booderee waters).

Jervis Bay is known for its protected beaches, clear waters, expansive seagrass beds and imposing cliffs, headlands and reef systems extending north and south of the entrance. Famous sport and gamefishing grounds including The Sir John Young Banks, the JB Canyons and the Drum Canyons can be easily accessed via JB, allowing boat-based anglers the opportunity to target iconic species such as yellowfin tuna, dolphinfish, yellowtail kingfish and blue, black and striped marlin.

Jervis Bay is also a popular area for spearfishing, either from the shore or out of a boat. It is important to note that no spearfishing is allowed within the Booderee National Park.

The entire area boasts plenty of holiday accommodation, caravan parks and camping grounds. The main tributary flowing into JB is Currumbene Creek, which enters the bay at Huskisson. A number of smaller waterways also drain into the bay.

Popular with anglers of all skill levels, the JBMP offers year-round fishing access across a diverse array of environments for a range of popular sport and table fish.

Jervis Bay

Key target species



> Snapper



PEAK SEASON – Year round.

TECHNIQUE – Bait fishing with pilchards and strips of fresh mullet or similar; lure fishing with vibes and soft plastics.

TACKLE – 4-6kg spin outfits, 4-8kg braid or mono line and 4-8kg leader. When bait fishing, use 1/0-5/0 non-offset circle hooks on a running sinker rig. Allow the bait to drift naturally in the current. The use of berley is advised when targeting snapper around reefy areas. On deeper reefs or gravel beds on the offshore grounds, snapper can be caught

using a traditional Paternoster rig baited with fresh squid, mullet or striped tuna. Use 7-14 gram jig heads on size 1/0-3/0 extra strong hooks teamed with 6-12cm “wiggler” or “jerkshad” style tails when targeting snapper on plastics around JB’s inshore reef systems.

HOT SPOTS – Reefs including Plantation Point, Middle Ground and Longnose Point inside JB; various offshore reefs north and south of the bay.

BAG & SIZE LIMITS – 10 per day 30cm and over.

Yellowtail Kingfish

PEAK SEASON – Year round, warmer months generally more productive.

TECHNIQUE – Trolling livebaits around reefs and drop offs; jigging around reefs and bait schools; livebaiting from deep water rock ledges.

TACKLE – Most anglers specifically targeting kingfish in Jervis Bay use 10-24kg heavy spin or overhead tackle loaded with 10-37kg braid or mono line and leaders from 20-50kg. Non-offset circle hooks in the 6/0-9/0 size range are preferred when livebaiting with live squid or slimy mackerel.

HOT SPOTS – Reefs such as Point Perpendicular, Longnose Point and Middle Ground inside the bay; the cliffs north and south of the entrance; and offshore reefs such as “The Banks” north of JB are popular kingfish grounds.

BAG & SIZE LIMITS – 5 per day 65cm and over.



Sand & Tiger Flathead

PEAK SEASON – Year round.

TECHNIQUE – Drifting deep water areas either inside the bay itself or offshore using Paternoster rigs.

TACKLE – 10-15kg spin or overhead outfits, 10-15kg braid or mono line and 15kg leader. Use 3/0-5/0 non-offset circle hooks on droppers above a suitable “snapper” style sinker (size and weight depending on water depth, current and drift rate). Good baits include strips of fresh squid, yellowtail fillets and salted slimy mackerel fillets.

HOT SPOTS – For sand flathead, drift areas of sandy seabed in water from 20-50m in depth inside and just outside the bay; for tigers, try deeper water from 40-100m on the offshore grounds.

BAG & SIZE LIMITS – 10 per day 33cm and over.



Sand flathead



Tiger flathead

Bream

PEAK SEASON – Year round.

TECHNIQUE – Bait fishing with fresh prawns, fish strips, marine worms; lure fishing with soft plastics, vibes and small hard-bodied divers.

TACKLE – 2-4kg spin outfits, 2kg braid or mono and 2-5kg leader. For bait fishing, use size 2-1/0 non-offset circle hooks on a running sinker rig. The use of berley is effective when targeting bream on bait, especially around reefy areas or in Currumbene Creek. Use 1-2 gram jig heads on size 1-2 hooks teamed with 3-8 cm “wiggler” style tails when targeting bream on plastics in the creek or off beaches.

HOT SPOTS – Calm water beaches inside JB; surf beaches north and south of the bay; shallow rocky reefs; Currumbene Creek; edges of seagrass and weed beds in the bay.

SIZE & BAG LIMITS – 10 per day 25cm and over.



Australian Salmon

PEAK SEASON – March to October.

TECHNIQUE – Bait fishing with whole ganged pilchards or strips of fish from surf beaches and rocky headlands; lure trolling around headlands and reefs with diving hard-bodies or small skirted lures; spinning from beaches, headlands or reefs with metal baitfish imitations.

TACKLE – 4-6kg spin outfits using 3m rods from beach/rock fishing; 4-6kg spin or overhead outfits if fishing from a boat. Use 6kg braided line with 8kg mono leader.

HOT SPOTS – Kinghorn Point, Target Beach, Steamers Beach and Bhowherre Beach are noted salmon beaches around the JB area. Reef areas such as Longnose Point and Bowen Island are well worth trolling or spinning.

BAG LIMIT – 5 per day.



Squid

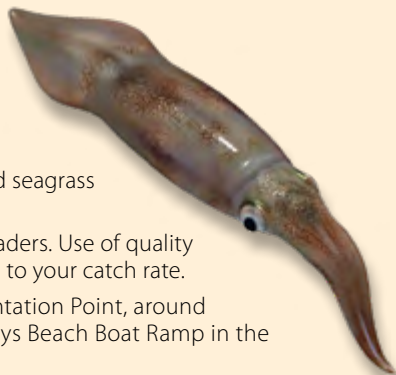
PEAK SEASON – Year round.

TECHNIQUE – Casting and retrieving squid jigs around seagrass beds, headlands and shallow weedy reefs.

TACKLE – 4kg spin outfits with 3kg braid and 3-4kg leaders. Use of quality Japanese-style squid jigs makes a significant difference to your catch rate.

HOT SPOTS – The seagrass beds on the inside of Plantation Point, around Callala Bay, along Long Beach and out from the Murrays Beach Boat Ramp in the Booderee National Park are all proven squid grounds.

BAG & SIZE LIMITS – 20 per day in JBMP waters; 10 per day in Booderee waters.

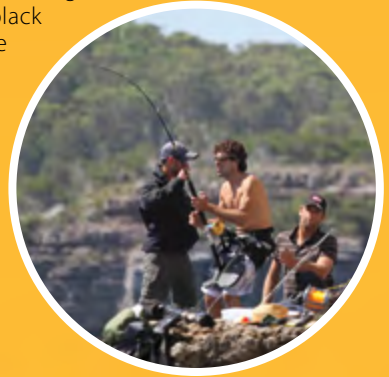


Other Species

A number of other species including rock blackfish (drummer), luderick, Australian bonito, silver trevally, jackass morwong, groper, leatherjacket, garfish and mullet are also available in the JBMP, depending on season and conditions. Iconic gamefish such as black marlin are caught each summer by land-based game specialists fishing from "The Tubes", a famous rock ledge inside the northern headland of Jervis Bay.

The Tubes is internationally unique in that it offers the chance to catch marlin from the rocks. The Tubes is part of the Beecroft Weapons Range, which is managed by the Department of Defence. Specific regulations and restrictions apply to this area.

See www.pointperp.com for more information.



Catch & Release Info

Catch & release fishing is becoming increasingly popular, with many anglers now electing to release key species such as flathead, bream, tailor and mullet. Recent research by NSW DPI has shown that most fish survive using current C&R techniques.

Key ways to release fish successfully include:

- Using non-offset circle hooks and artificial lures.

- Using suitable tackle to minimise fight times.
- Using knotless landing nets.
- If deeply hooked, cutting the line close to the mouth.
- Minimising the fish's time out of the water.
- Using wet hands or gloves to handle fish.
- Reviving the fish upon release.

See www.dpi.nsw.gov.au/fisheries for more info on best practice C&R techniques.



Going Rock Fishing?

Fishing, especially rock fishing, can be dangerous. Follow these basic safety tips at all times when fishing off the rocks around the Jervis Bay area.

- Never fish by yourself.
- Inform others of your plans.
- Wear light clothing.
- Wear appropriate footwear.
- Wear a lifejacket.
- Fish only in places you know are safe and never fish in exposed areas during rough or large seas.
- Observe first, fish later.
- Plan an escape route in case you are washed in.
- Stay alert.
- Ask for advice from locals who know the area.
- Do not jump in if someone is washed into the water.

For more information on rock fishing safety, go to www.safefishing.com.au and www.watersafety.nsw.gov.au.



CREATING MORE PLACES TO FISH

... that's what the NSW DPI offshore artificial reefs program is all about!

DPI's ground-breaking approach to artificial reef design is providing reef structures that will not only last for decades but which are scientifically shown to be among the most productive habitats in our coastal waters.

A series of reefs of varying designs have already been installed right along the New South Wales coastline with more being planned, for locations please see for more information <https://www.dpi.nsw.gov.au/fishing/recreational/resources/artificial-reef>

The reefs are designed to provide habitat for key recreational sportfish such as kingfish, snapper and mullet, as well as abundant bait species.

A key goal of DPI's artificial reefs program is to increase recreational fishing opportunities for current and future fishing generations.



Download the DPI FishSmart App or visit the NSW DPI website for GPS coordinates to our artificial reef network.



These reefs are built using funds from the Recreational Fishing Trusts.

[dpi.nsw.gov.au/artificial-reef](https://www.dpi.nsw.gov.au/artificial-reef)

