



**FREE
NSW
GUIDE**

Go Fishing

Featured location:
ULLADULLA

Recreational Fishing
HOTSPOT!

dpi.nsw.gov.au





Contents

Overview	3
Key target species	5
Other species	7
Ulladulla fishing locations	8
Catching big flathead	9

Cover Image: The Ulladulla region is home to some big flathead!
All other images by Chris Cleaver. Fish illustrations: Pat Tully.

18114 12/2022

This fishing location guide is produced by the NSW Department of Primary Industries (NSW DPI) LMB 3020 Nowra NSW 2541, for and on the behalf of the state of New South Wales. This guide is produced using funds from the Recreational Fishing Trust as part of our commitment to providing recreational fishers with comprehensive, user-friendly information.

© State of New South Wales through Department of Regional NSW [2022].

Disclaimers

This publication may provide assistance or information but NSW DPI and its employees do not guarantee the publication is without flaw or is wholly appropriate for any particular purpose and therefore disclaims all liability for any error, loss or other consequence which may arise from relying on any information in this publication.

This publication is a guide only, it does not replace the *Fisheries Management Act 1994* or other acts and statutory rules applying to or affecting recreational fishing. It is a summary of laws and regulations at the time of publication and cannot be used as a defence in a court of law.

Recreational fishing regulations may change during the lifetime of this publication. It is the responsibility of fishers to ensure they are acting within the law at all times. Check regulations with your local NSW DPI fisheries office or www.dpi.nsw.gov.au/fisheries.

The product trade names in this publication are supplied on the understanding that no preference between equivalent products is intended and that the inclusion of a product name does not imply endorsement by the department over any equivalent product from another manufacturer.

No material matter in this publication may be reproduced, stored in a retrieval system, or transmitted in any form by electronic or mechanical means, photocopying or recording without the written permission of NSW DPI.

FOREWORD

FROM NSW DPI



Throwing a line in at a new spot always makes for a great fishing adventure, whether it's on a family holiday or just somewhere new close to home. No matter your fishing expertise, NSW boasts a wide range of fish species and great places to catch them, including in our many inland rivers, impoundments and streams to the productive estuaries, lakes, beaches and rocky headlands on the NSW coast. There are also many inshore and offshore fishing opportunities from your boat or if using one of the many experienced charter fishing services available.

There are many reasons to go fishing, including to unwind and relax, spend time with family and friends, enjoy nature and of course to catch a tasty meal of fresh fish. Over a million people in NSW enjoy this fantastic lifestyle and the great news is that you are never too old or young to take up fishing so get out there and give it a go! Getting into fishing is easy. If you don't know where to start, just head into your local tackle store where the friendly staff can provide tips on tackle, bait and techniques plus point you to a safe, convenient spot to throw a line in.

NSW DPI has developed these *Go Fishing* guides as a snapshot of popular NSW fishing locations in both fresh and saltwater to help improve your recreational fishing experiences.

For more information on other locations, fish species, size and bag limits and permitted gear not listed in these guides, visit the NSW DPI website or download the **FishSmart App** from the App store on your Android or iPhone.

OVERVIEW

The coastal town of Ulladulla is located on the NSW South Coast halfway between Batemans Bay to the south and Nowra to the north.

At just over 3 hours' drive from Sydney, and about 2.5 hours from Canberra, Ulladulla is a great option for a weekend family fishing getaway.

The Ulladulla area was historically known for its timber and dairy industry, but is today more recognised for its harbour around which the main township is situated -and its fleet of commercial fishing trawlers and longline vessels.

Due to the ease of access from major cities like Sydney, Wollongong and Canberra, and the good launching facilities offered in the harbour, Ulladulla is a favoured destination for keen recreational fishers, who target gamefish such as marlin and dolphinfish during the summer and southern bluefin and yellowfin tuna during autumn and winter.

Game fish aside, the continental shelf canyons offshore from Ulladulla are also productive for tasty blueeye trevalla, pink ling and other deep water species; inshore, snapper are a popular target, as are sand and tiger flathead.

If offshore fishing isn't your thing, then don't despair as there are four recreational fishing havens (RFHs) - Lake Conjola, Burrill Lake, Lake Tabourie and Narrawallee Inlet - close to Ulladulla.

All four local RFHs provide easy fishing access for popular species such as dusky flathead, bream, whiting, estuary perch, silver trevally and more. The larger two of the four Lake Conjola and Burrill Lake - are well known for trophy flathead, especially when using surface lures, swimbaits and glide baits.

Continued on page 4

Sydney

Ulladulla





Continued from page 3



All four offer fantastic launching facilities for boats, kayaks and canoes with many sheltered bays and feeder creeks to explore.

North and south of the town are an array of ocean beaches, providing opportunities for salmon, tailor, bream and even mulloway at times.

While there are plenty of fishing options, Ulladulla and surrounding towns such as Milton are ideal for family holidays with plenty of cafés, shops and beaches to enjoy. The Ulladulla Fun Park is also popular with the kids!

Plan your trip today!



This Ulladulla *Go Fishing* guide is part of a series of guides to popular locations in NSW. Keep an eye out for our range of location guides to salt and freshwater fishing locations as we're constantly adding new spots and updating existing guides.

KEY TARGET SPECIES

SNAPPER

PEAK SEASON:

Year-round; April-October are key months on the NSW South Coast.

TECHNIQUES:

Bait fishing with pilchards and strips of fresh tuna or similar; lure fishing with soft plastics, jigs and vibes.

TACKLE:

4-6kg spin outfits, 4-8kg braid or equivalent mono and a leader of 8-15kg. When bait fishing, use 2/0-7/0 non offset circle hooks with a running ball sinker. Allow the bait to drift naturally in the current. The use of berley is advised when targeting snapper around reefs. Snapper can be targeted on deeper reefs and gravel beds using a traditional Paternoster rig baited with squid, fresh tuna or pilchards. Try a soft plastic in place of bait on the hook as it can work well if bait is not producing the goods. Lure fishing is very successful for South Coast snapper. Try "kaibura" and slow jigs in the 60-200gram size or jigheads in the 7-27gram size with 4-7-inch plastics. These lure recommendations will work from the shallows out to the 70m depth range.



HOT SPOTS

Canberra Ave Reef/Peak/
Snapper Reef

SIZE & BAG LIMITS

10 per day 30cm and over.



SAND & TIGER FLATHEAD

PEAK SEASON:

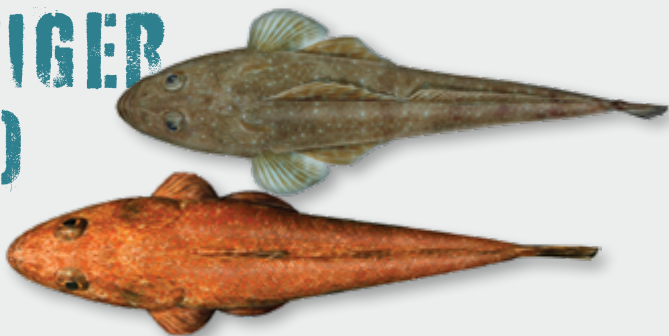
Year-round.

TECHNIQUE:

Drifting deep water areas adjacent to reef using Paternoster rigs.

TACKLE:

10-15kg spin or overhead outfits, 10-15kg braid or mono line and 15kg leader. Use 3/0-5/0 non-offset circle hooks on droppers above a suitable "snapper" style sinker (size and weight depending on water depth, current and drift rate). Good baits include strips of fresh squid and yellowtail.



HOTSPOTS

For sand and tiger flathead, drift areas of sandy seabed adjacent to reefy areas in water from 20-80m in depth offshore to the north and south of Ulladulla.

SIZE & BAG LIMITS

10 per day 33cm and over.

STRIPED MARLIN

PEAK SEASON:

January - April.

TECHNIQUE:

Trolling skirted lures or drifting/slow trolling bridle-rigged slimy mackerel around bait congregations close to the continental shelf line. Keep a look out for birds and seals as they will signal where bait schools have been pushed to the surface. If you see bait, a "stripey" usually won't be far away! Tide changes can result in increased marlin activity. If a tide change is coming up, make sure your lures are running well, your baits are fresh and healthy and you're in a good-looking area!

TACKLE:

15-24kg lever drag overhead game outfits with 15-24kg monofilament with a plaited double then a 50-100kg wind on leader to a heavy-duty game snap swivel to attach a lure for trolling or an 8/0-10/0 circle hook when using bait.



HOTSPOTS

Ulladulla Canyon

SIZE & BAG LIMITS

No legal length, 1 of each species per day.

SOUTHERN BLUEFIN TUNA



PEAK SEASON:

June–August.

TECHNIQUE:

Trolling skirted, bibless or minnow lures and cubing with fresh pilchards, yellowtail and slimy mackerel around temperature breaks over the continental shelf line. Keep a look out for mutton birds and especially gannets and albatross they will signal where the bait schools are. The fish will follow the bait. As with marlin, tide changes can be a peak of tuna activity on an otherwise quiet day. When coming up to a tide change, ensure your lures are running well or you are cubing near a good temp break with signs of life.

HOTSPOTS

Temperature breaks over the continental shelf in 500-2000 fathoms.

SIZE & BAG LIMITS

no legal length, bag limit of 1.

TACKLE:

15-24kg lever drag overhead game outfits with 15-24kg monofilament with a plaited double knot then a 50-100kg wind on leader to a heavy-duty game snap swivel to attach a lure for trolling or an 8/0-10/0 circle hook when using bait.

OTHER SPECIES



Ulladulla offers a range of fishing options apart from XOS dusky flathead and big game species. For example, the headwaters of local freshwater creeks produce Australian bass. Further downstream the same creeks provide opportunities to target estuary perch, black bream, trevally, whiting and other estuary species. The lakes and inlets then lead out to the ocean beaches where tailor and salmon are key targets, with a real chance of a big mulloway as well. Ulladulla really does have a lot to offer anglers of all skill levels and interests. Check it out for yourself!



ULLADULLA FISHING LOCATIONS

NOTE: This fishing map is only to be used as a general reference overview.

See www.dpi.nsw.gov.au for details on fishing regulations.

Not for navigation.

BOAT RAMPS

- **Bendalong:** Manta Ray Rd, Boat Harbour Beach – all boats
- **Fishermans Paradise:** Anglers Parade – Small craft only
- **Lake Conjola:** Holiday Haven Caravan Park – Lake Conjola Entrance Road
- **Lake Conjola:** Yooralla Bay – Small craft only and ski boats
- **Narrawallee Inlet:** Narrawallee (Normandy St) – Small craft only

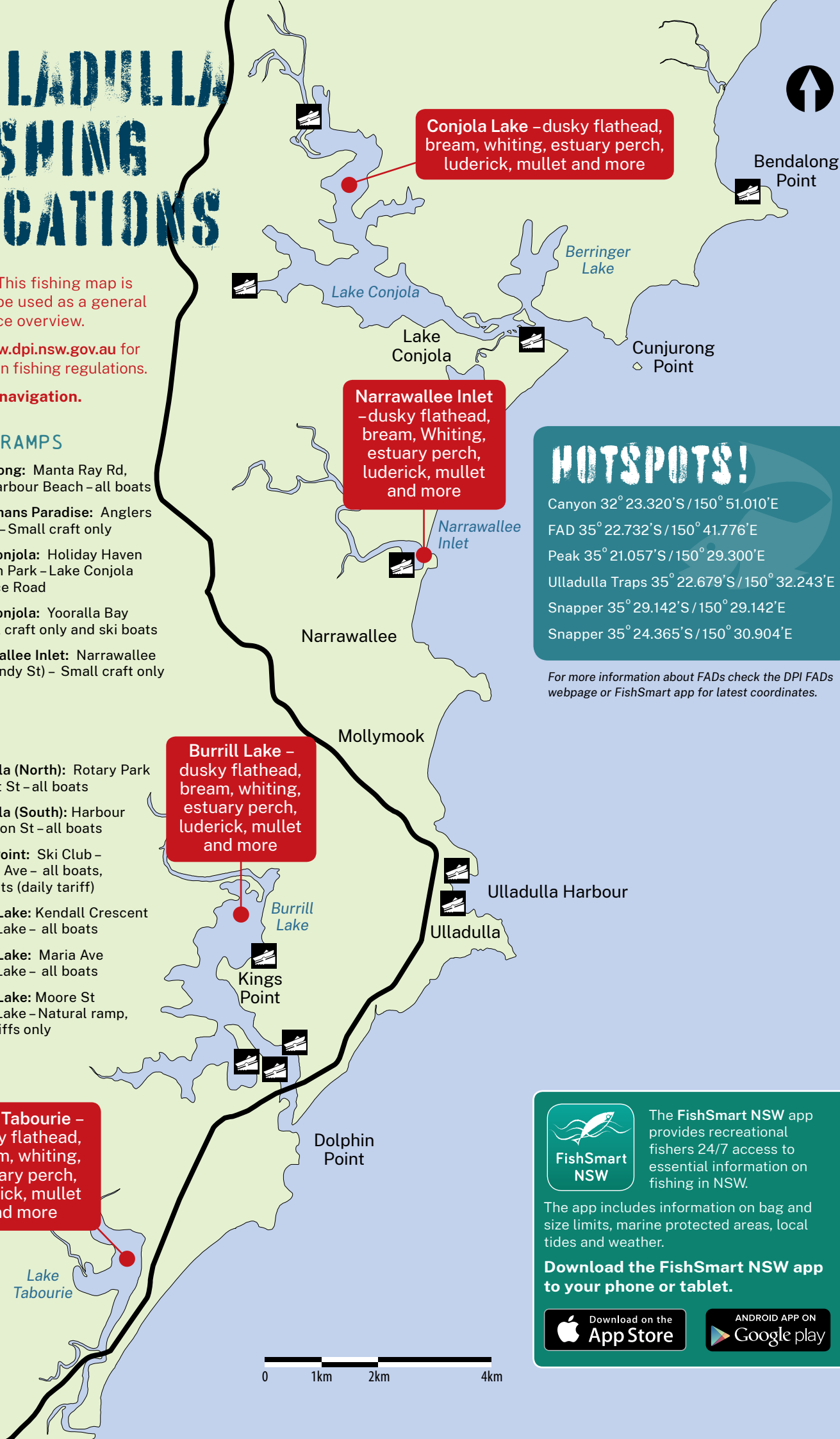
- **Ulladulla (North):** Rotary Park Crescent St – all boats
- **Ulladulla (South):** Harbour via Wason St – all boats
- **Kings Point:** Ski Club – Edward Ave – all boats, no yachts (daily tariff)
- **Burrill Lake:** Kendall Crescent Burrill Lake – all boats
- **Burrill Lake:** Maria Ave Burrill Lake – all boats
- **Burrill Lake:** Moore St Burrill Lake – Natural ramp, cats/skiffs only

Lake Tabourie – dusky flathead, bream, whiting, estuary perch, luderick, mullet and more

Burrill Lake – dusky flathead, bream, whiting, estuary perch, luderick, mullet and more

Narrawallee Inlet – dusky flathead, bream, Whiting, estuary perch, luderick, mullet and more

Conjola Lake – dusky flathead, bream, whiting, estuary perch, luderick, mullet and more



HOTSPOTS!

- Canyon 32° 23.320'S / 150° 51.010'E
- FAD 35° 22.732'S / 150° 41.776'E
- Peak 35° 21.057'S / 150° 29.300'E
- Ulladulla Traps 35° 22.679'S / 150° 32.243'E
- Snapper 35° 29.142'S / 150° 29.142'E
- Snapper 35° 24.365'S / 150° 30.904'E

For more information about FADs check the DPI FADs webpage or FishSmart app for latest coordinates.



The FishSmart NSW app provides recreational fishers 24/7 access to essential information on fishing in NSW.

The app includes information on bag and size limits, marine protected areas, local tides and weather.

Download the FishSmart NSW app to your phone or tablet.



CATCHING

BIG

FLATHEAD

Fishing surface, swimbait and glide bait lures for trophy-sized (80cm and over) flathead has become the best technique to tempt these larger-than-life specimens. Lake Conjola, a short drive to the north, and Burrill Lake an even lesser drive to the south of Ulladulla, have stamped their names as XOS flathead locations. Both lakes feature shallow sand flats and weed edges with drop-offs, and feeder creeks in the upper reaches. The sandy flats, weed edges and drop offs are good spots to target the local flathead as the fish will actively hunt the mullet, whiting and prawns that frequent these areas. A boat with a bow mounted electric motor or a kayak that allows you to quietly move along the edges of the lakes, continually casting working the lure from shallow to deep is the proven way to target big flathead. The same technique works fishing land based, just in reverse as you're casting

out to deeper water and working the lure back in to the shallows. Whether fishing from a boat/kayak or from shore, be sure to work the lures slowly and methodically. Focus on any sand pockets in the weed or the edges of rocks meeting the sand and mud.



LURES AND SEASONS

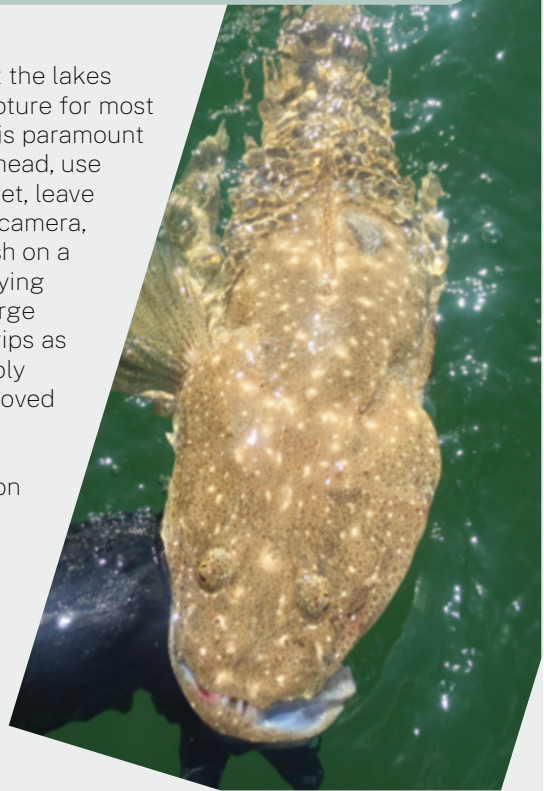
Large surface lures such as bent minnows and walk the dog pencils in a 12-20cm size, unweighted or very lightly weighted worm hook rigged soft plastics, swim and glide baits in the same size range. The surface lures produce best from December through to April when the prawns are running; the months either side of this time is preferred for using the large worm hook rigged soft plastics. Swim and glide baits can be used any time of year; however, the preferred months are October through to June when the lake edges are warm and bait fish plentiful. These lures need to be worked continuously so they do not foul any weed which hampers their action and fish catching appeal. The trick is learning the right speed to have them seductively swimming a few inches above the bottom.

TACKLE

A 2.13m (7ft) 3-6kg rated spin rod matched to a 2500-4000 sized reel spooled with 10-20lb braided line and a fluorocarbon leader of 20-40lb will suffice for fishing surface lures and soft plastics. The spin rod allows lighter unweighted plastics to be cast a good distance. For swimbaits, the same outfit can be used, however a dedicated outfits designed for fishing swimbaits is best. Typically, this would be a 2.13m-2.44m (7-8ft) overhead rod rated at 6-8 or 8-15kg matched to 150-200 baitcast reel spooled with 20-30lb braided line and a fluorocarbon leader of 25-50lb. Other handy kit includes a large knotless landing net, set of long nose pliers, a brag or measure mat and a thick glove to grip the fish on the lower jaw for a quick photo and release.

HANDLING AND CARE

The trophy-sized dusky flathead that inhabit the lakes around Ulladulla are a once-in-a-lifetime capture for most anglers. Looking after these great sportfish is paramount to ensure their survival. When landing a flathead, use a large knotless net. Once the fish is in the net, leave it in the water until you have your brag mat, camera, and other equipment ready. Never lay the fish on a hot deck, always wet the brag mat before laying the fish down to measure. When handling large flathead, it is recommended to not use lip grips as this can cause damage to the fish's jaw, simply thumb grip the fish's lower jaw with a wet gloved hand. Always support the weight of the fish with your second hand. When lifting, always lift the fish parallel; never put any pressure on the vertebrae behind the fish's head. If your camera is immediately available, take a few quick pictures and then place the fish in the water until it is ready to swim away. Please note that a slot limit of 36-70cm applies for dusky flathead in NSW. Fish under 36cm and over 70cm must be released.

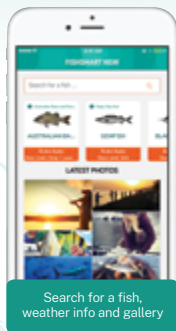


Check out the app: FishSmart



NSW DPI has created an app that provides recreational fishers with 24/7 access to essential information they need to know to fish in NSW, such as:

- a pictorial guide of common recreational species, bag & size limits, closed seasons and fishing gear rules
- real-time maps to locate nearest FADs (Fish Aggregation Devices), artificial reefs, Recreational Fishing Havens and Marine Park Zones
- local weather, tide, moon phase and barometric pressure to help choose best time to fish
- guides on spearfishing, fishing safely, trout fishing, regional fishing
- DPI contact for reporting



Search for a fish, weather info and gallery



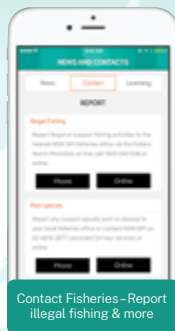
See your location in relation to FADs, Marine Park Zones, RFHs & more



Check the bag and size limits for popular species



Check the rules for different gear types



Contact Fisheries - Report illegal fishing & more



www.dpi.nsw.gov.au