



Collecting animals and plants from rock platforms and sand flats around Sydney

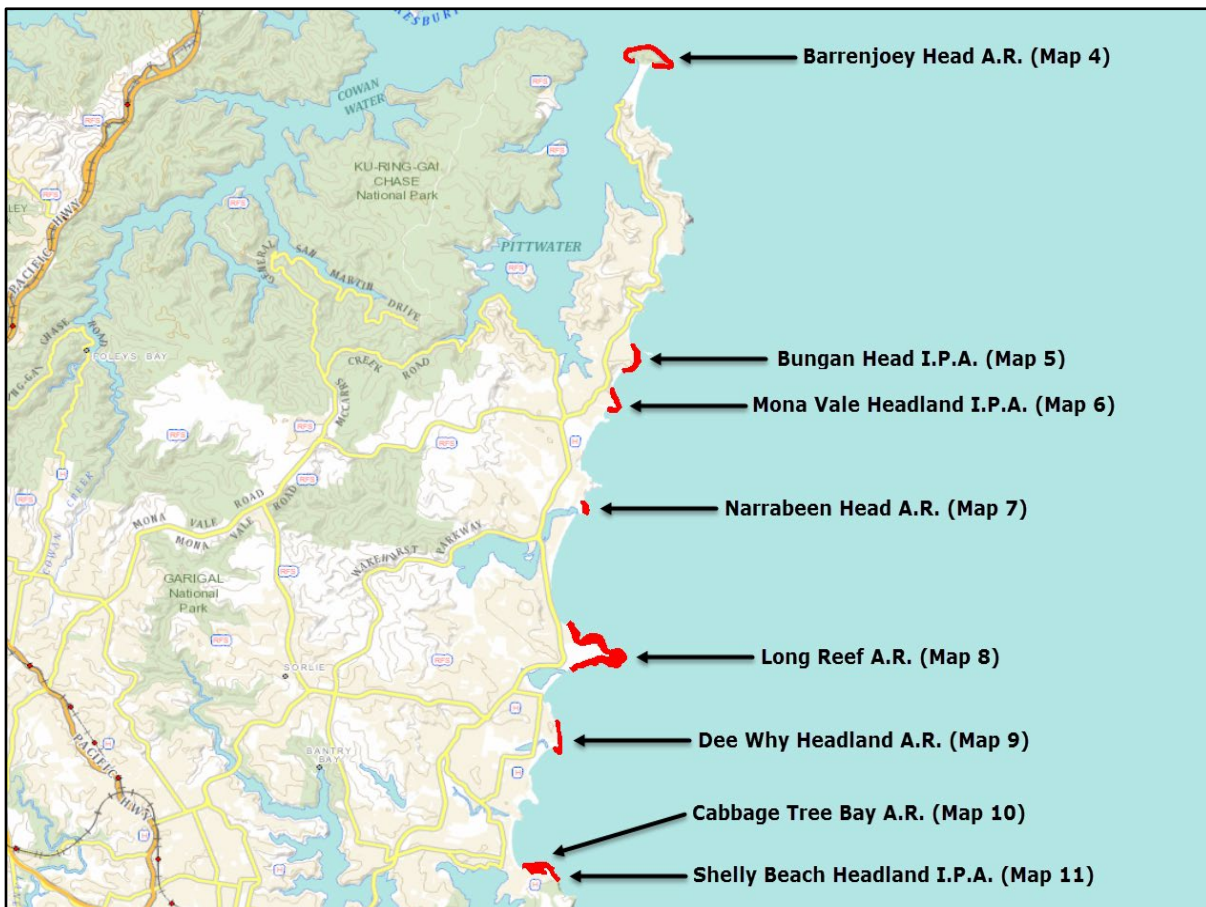
February 2024

Collecting marine animals and plants is a popular activity in the Sydney region, but there are areas where restrictions apply. In particular there are a number of Aquatic Reserves and Intertidal Protected Areas where marine animal and plant collection is completely prohibited or restricted. The purpose of this guide is to:

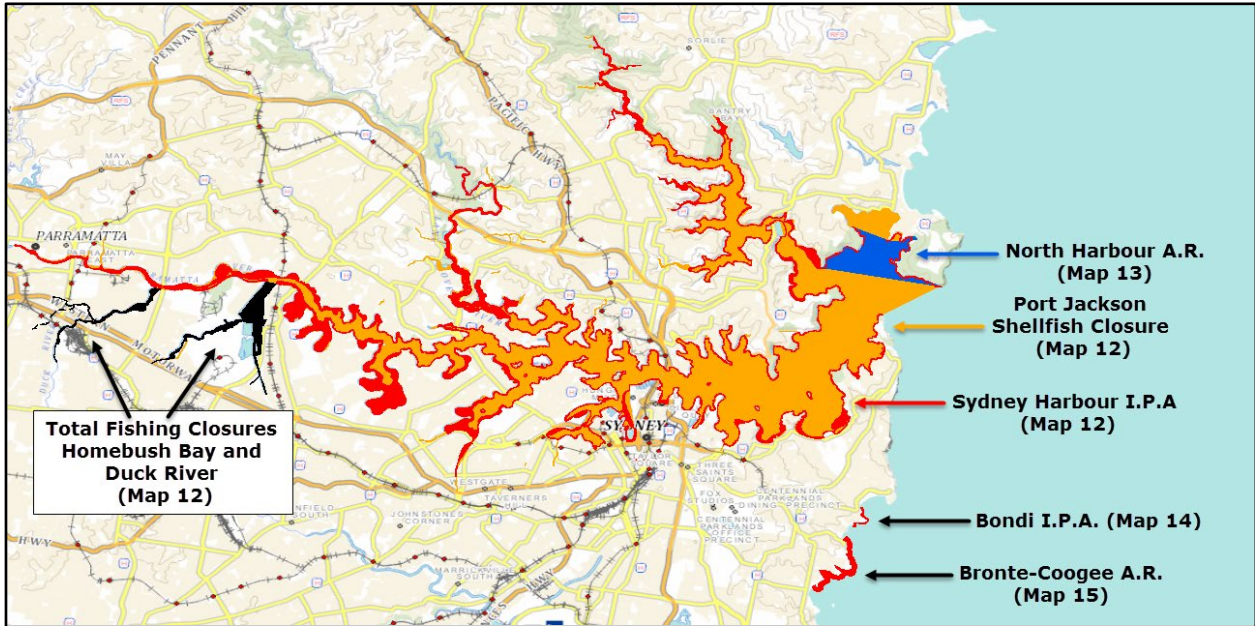
- Identify these restricted areas and the rules that apply to them and;
- For all other areas where marine animals and plants can be collected identify the bag and size limits of common marine animals and the lawful methods of collecting them.

Overview of Protected Areas: Aquatic Reserves (A.R), Intertidal Protected Areas (I.P.A) and other Fishing Closures

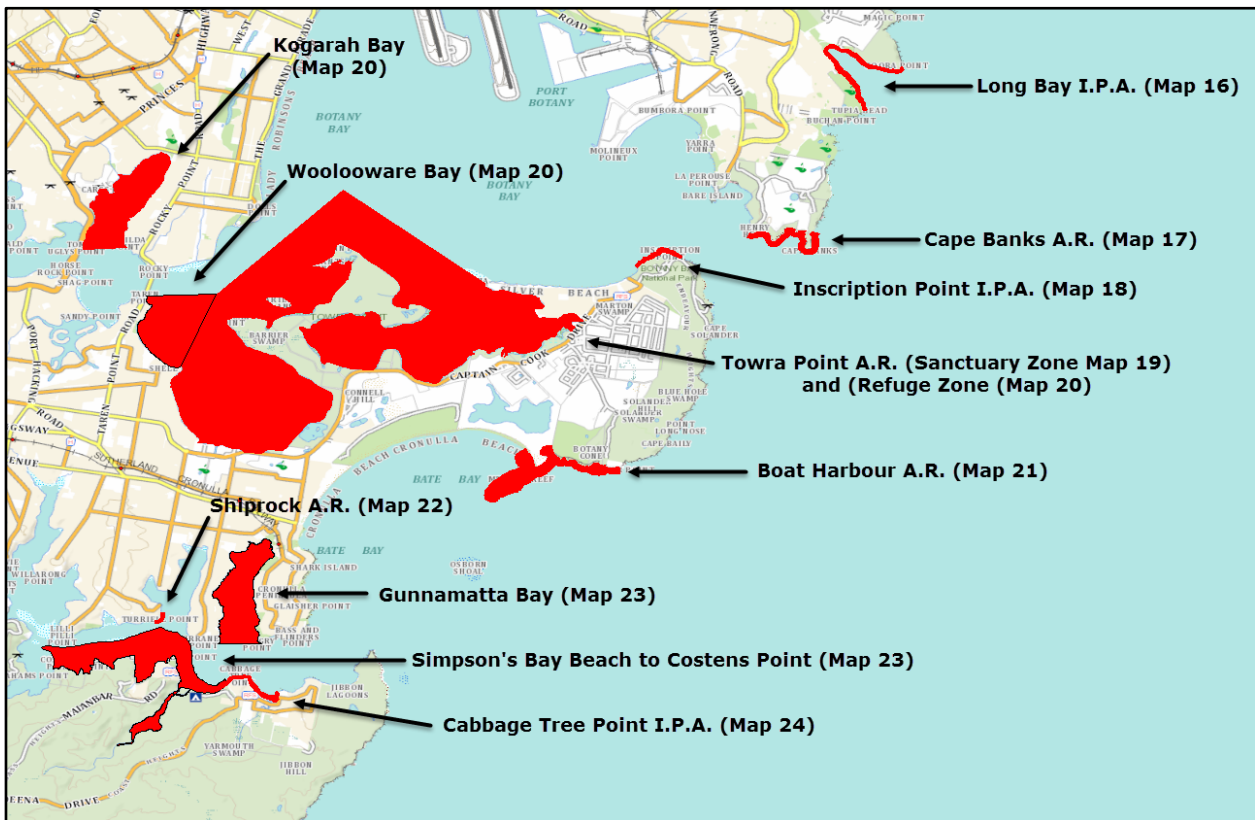
Map 1: Northern Beaches



Map 2: Sydney Harbour, Bondi and Bronte



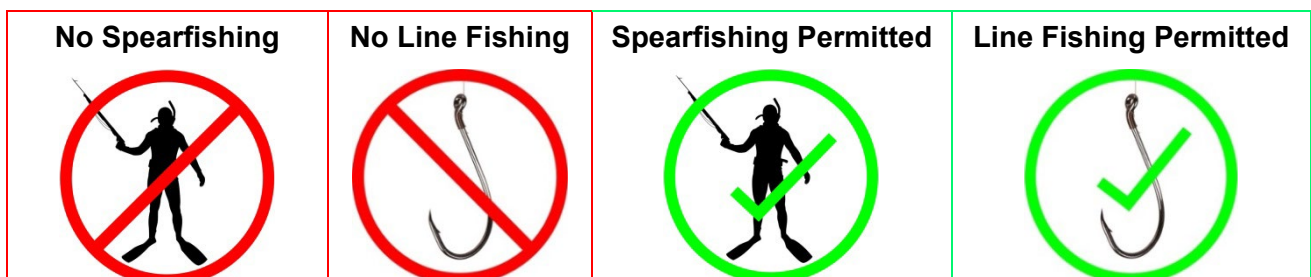
Map 3: Southern Beaches



Protected Areas Maps Legend



Fishing Gear Rules



Maps of Protected Areas

Map 4: Barrenjoey Head Aquatic Reserve*

*Lobsters, Abalone and Bait Weed may be taken from this protected area. Bag and size limits apply for Lobster and Abalone.



Map 5: Bungan Head Intertidal Protected Area*

*Lobsters, Abalone and Bait Weed may be taken from this protected area. Bag and size limits apply for Lobster and Abalone.



Map 6: Mona Vale Headland Intertidal Protected Area*

*Lobsters, Abalone and Bait Weed may be taken from this protected area. Bag and size limits apply for Lobster and Abalone.



Map 7: Narrabeen Head Aquatic Reserve*

*Lobsters, Abalone and Bait Weed may be taken from this protected area. Bag and size limits apply for Lobster and Abalone.



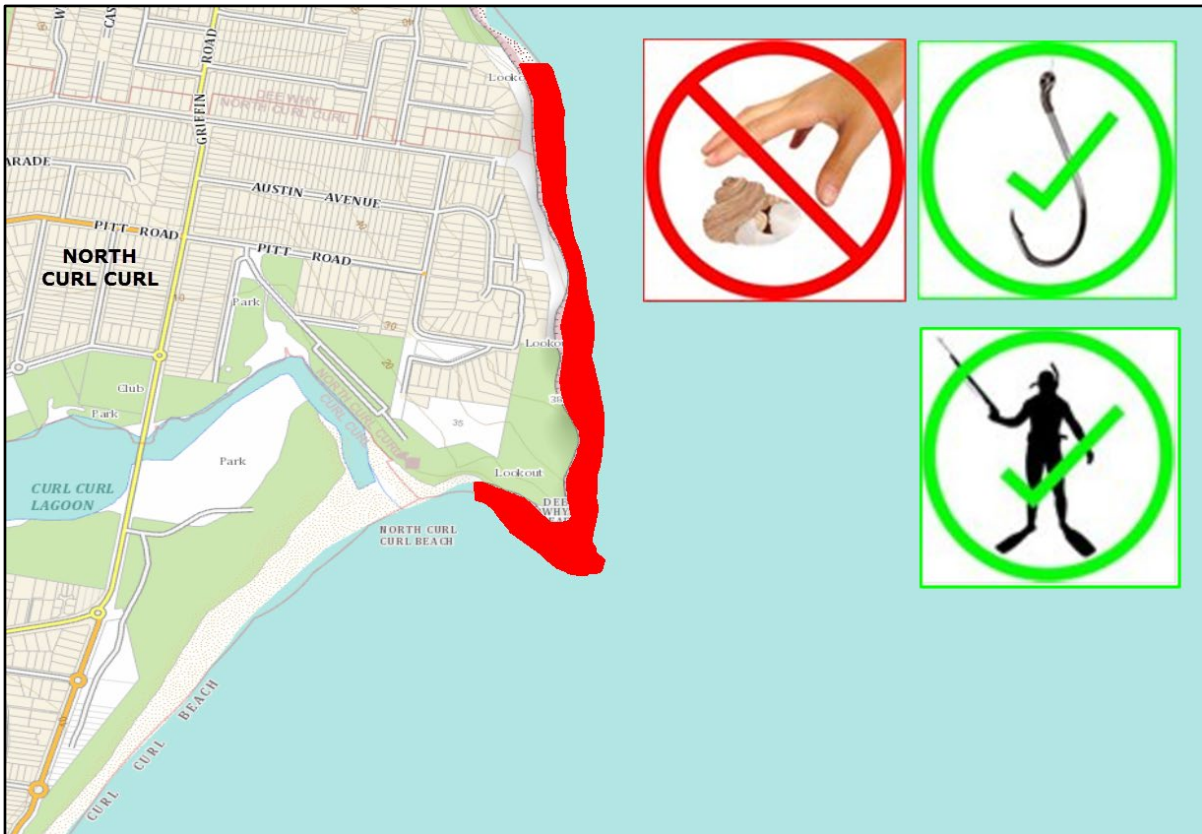
Map 8: Long Reef Aquatic Reserve*

*Finfish may be taken by hand held line or spear only.



Map 9: Dee Why Headland Intertidal Protected Area*

*Lobsters, Abalone and Bait Weed may be taken from this protected area. Bag and size limits apply for Lobster and Abalone.



Map 10: Cabbage Tree Bay Aquatic Reserve



Map 11: Shelly Beach Headland Intertidal Protected Area*

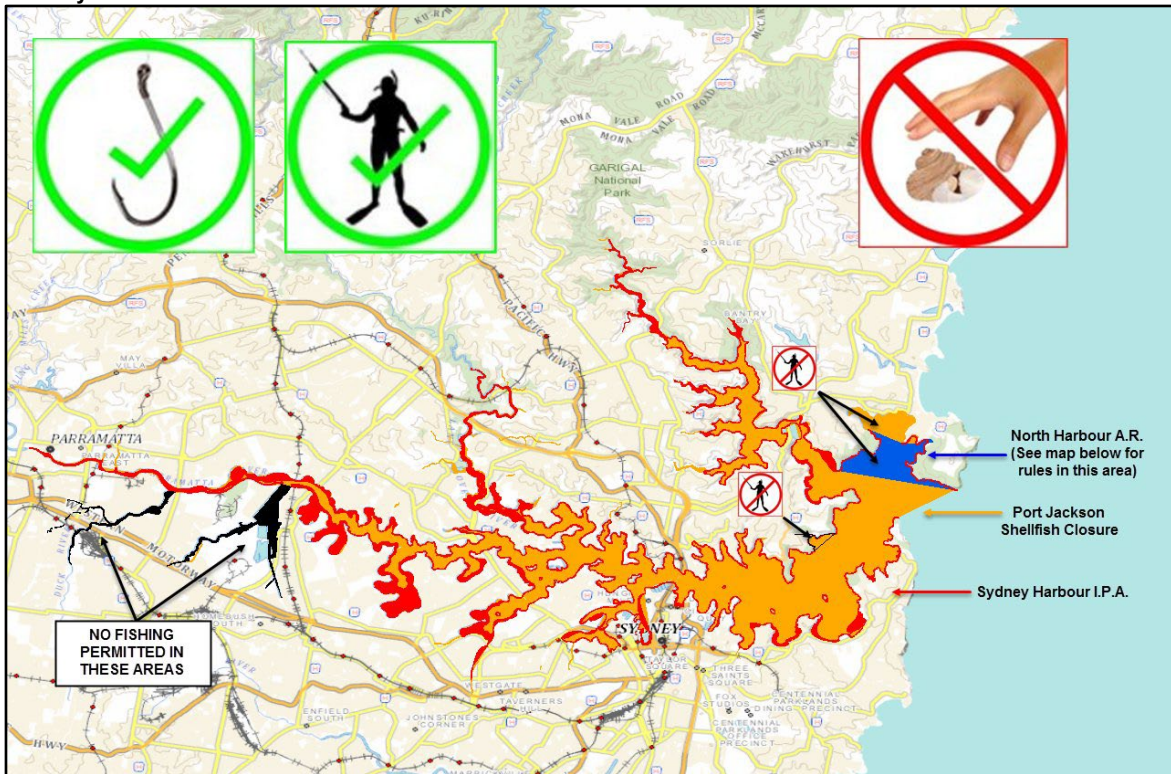
*Lobsters, Abalone and Bait Weed may be taken from this protected area. Bag and size limits apply for Lobster and Abalone.



Map 12: Sydney Harbour Intertidal Protected Area and Shellfish Closure*

*Lobsters and Bait Weed may be taken from this protected area. Bag and size limits apply for Lobster.

*No fishing is permitted in Duck River and Homebush Bay and spearfishing is also prohibited north of the Aquatic Reserve in Manly Cove.



Map 13: North Harbour Aquatic Reserve*

*Line fishing for finfish only, squid cannot be taken from this area. Spearfishing is also prohibited north of the Aquatic Reserve in Manly Cove.



Map 14: Bondi Intertidal Protected Area*

*Lobsters, Abalone and Bait Weed may be taken from this protected area. Bag and size limits apply for Lobster and Abalone.



Map 15: Bronte – Coogee Aquatic Reserve*

*Lobsters, Abalone and Bait Weed may be taken from this protected area. Bag and size limits apply for Lobster and Abalone.

*Spearfishing not permitted in Clovelly and Gordons Bays.

*Taking Groper not permitted in Clovelly and Gordons Bays by any method.



Map 16: Long Bay Intertidal Protected Area*

*Lobsters, Abalone and Bait Weed may be taken from this protected area. Bag and size limits apply for Lobster and Abalone.



Map 17: Cape Banks Aquatic Reserve*

*Lobsters, Abalone and Bait Weed may be taken from this protected area. Bag and size limits apply for Lobster and Abalone.

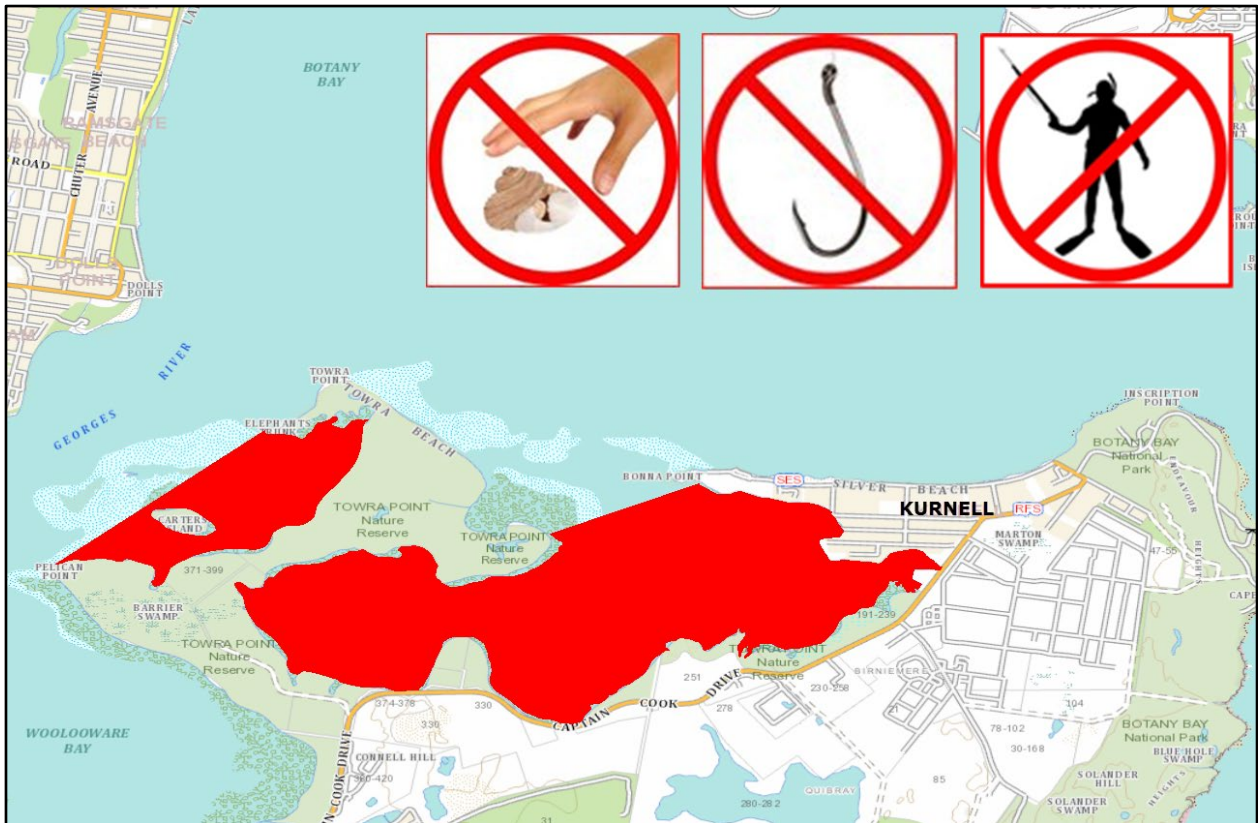


Map 18: Inscription Point Intertidal Protected Area*

*Lobsters, Abalone and Bait Weed may be taken from this protected area. Bag and size limits apply for Lobster and Abalone.



Map 19: Towra Point Aquatic Reserve – Sanctuary Zone



Map 20: Towra Point Aquatic Reserve – Refuge Zone*, Woolooware Bay** and Kogarah Bay***

*Recreational nets may also be used in this refuge zone.

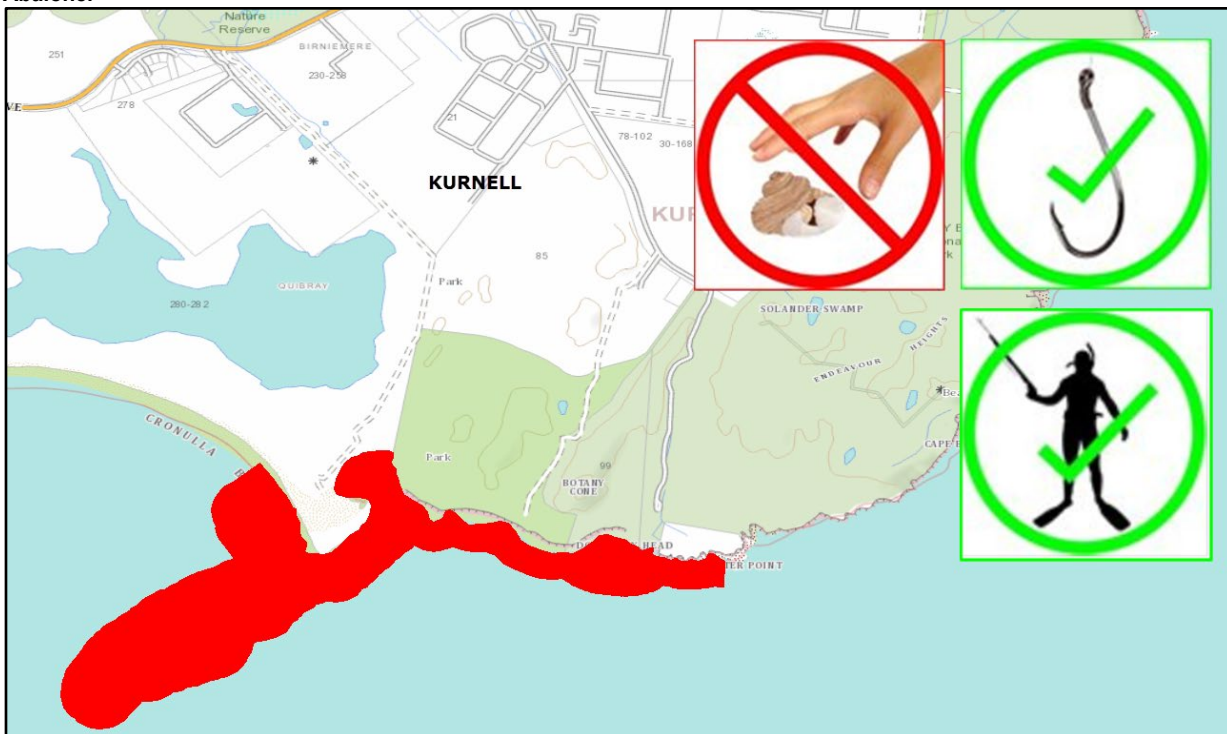
**Spearfishing is permitted in Woolooware Bay and Kogarah Bay.

***Pipi's, cockles and Whelks cannot be taken from Kogarah Bay.



Map 21: Boat Harbour Aquatic Reserve*

*Lobsters, Abalone and Bait Weed may be taken from this protected area. Bag and size limits apply for Lobster and Abalone.



Map 22: Shiprock Aquatic Reserve*

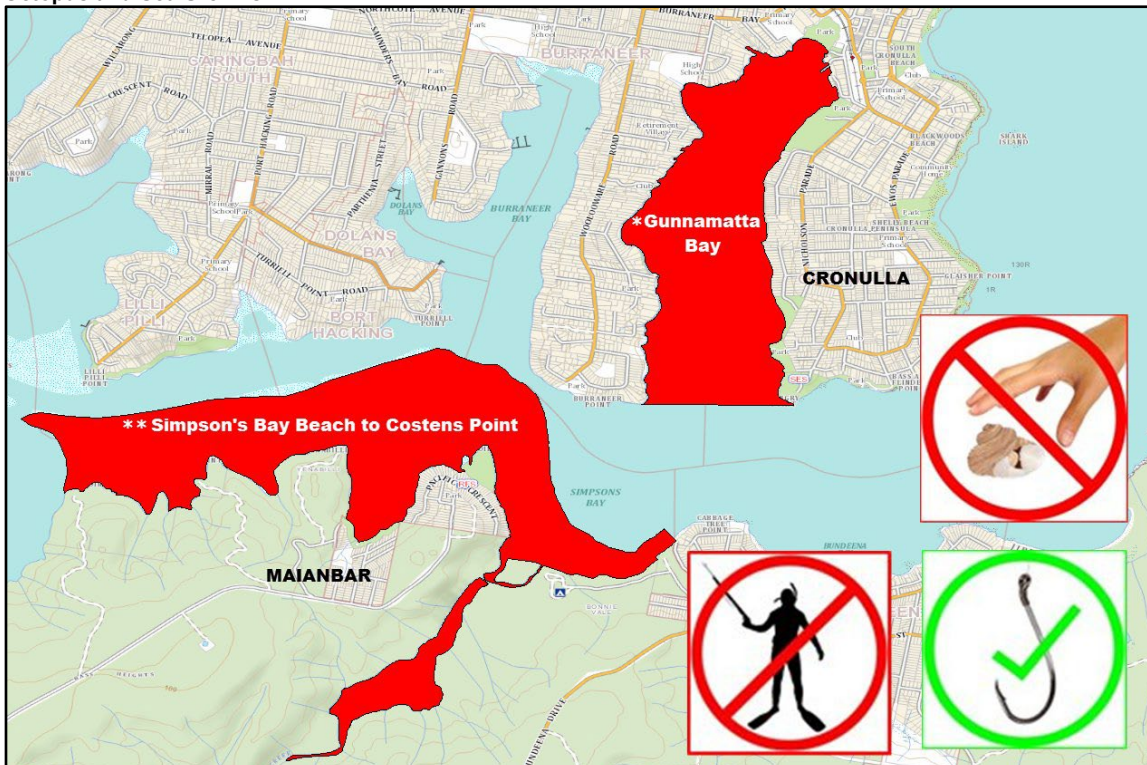
*Spearfishing is not permitted in any of the waters of Port Hacking.



Map 23: Gunnamatta Bay* and Simpson's Bay Beach to Costens Point**

*Gunnamatta Bay closed to the taking of worms, nippers and shellfish. Cephalopods and Echinoderms may be taken in this area including Octopus and Sea Urchins.

**Simpson's Bay Beach to Costens Point closed to the taking of all species of Bivalves and Gastropods including Cockles, Snails and Oysters. Crustaceans, Echinoderms and Cephalopods may be taken in this area including Nippers, Crabs, Octopus and Sea Urchins.



Map 24: Cabbage Tree Point Intertidal Protected Area*

*Lobsters, Abalone and Bait Weed may be taken from this protected area. Bag and size limits apply for Lobster and Abalone.



Other Areas

You may fish and collect marine animals and plants by hand along other Sydney foreshores but the following rules apply.

Prohibited Fishing Gear



Bag and Size Limits of Common Permitted Marine Animals

<p>Cockles, Mussels & Pipsis</p>  <p>Pipis: bait only</p> <p>Bag Limit: 50 in total, including maximum 20 Cockles</p> <p>Legal Length: None</p>	<p>Turban Snails</p>  <p>Bag Limit: 20 in total</p> <p>Legal Length: 7.5 cm for Sydney and Military Turban Snails only</p>	<p>Sea Urchins</p>  <p>Bag Limit: 10 in total</p> <p>Legal Length: None</p>
---	--	---

<p>Octopus</p>  <p>Cannot be taken from ocean rock platforms or Sydney Harbour</p> <p>Bag Limit: 10 in total Legal Length: None</p>	<p>Oysters</p>  <p>Bag Limit: 50 in total Legal Length: None</p>	<p>Scallops</p>  <p>Bag Limit: 50 in total Legal Length: None</p>
<p>Abalone</p>  <p>Bag Limit: 2 in total Legal Length: 11.7cm</p>	<p>Eastern Rock Lobster</p>  <p>Bag Limit: 2 in total Legal Length: 10.4cm to 18cm</p>	<p>Soldier Crabs</p>  <p>Bag Limit: 100 in total Legal Length: None</p>
<p>Mud Crab</p>  <p>Bag Limit: 5 in total Legal Length: 8.5 cm</p>	<p>Blue Swimmer Crab</p>  <p>Bag Limit: Bag Limit 10, 20 in total Legal Length: 6.5 cm</p>	<p>Other Crabs</p>  <p>Except Spanner Crabs</p> <p>Bag Limit: 10 in total Legal Length: None</p>
<p>Nippers</p>  <p>Bag Limit: 100 in total Legal Length: None</p>	<p>Beach Worms</p>  <p>Bag Limit: 20 in whole or part Legal Length: None</p>	<p>Other Worms</p>  <p>Bag Limit: 100 in total Legal Length: None</p>

<p>Cunjevoi</p>  <p>Bag Limit: 20 in total Legal Length: None</p>	<p>Prawns</p>  <p>Bag Limit: 10 litres in total Legal Length: None</p>	<p>Other Marine Snails</p>  <p>Bag Limit: 20 in total Legal Length: None</p>
---	---	--

Other Invertebrate Rules

Oysters cannot be taken from the waters of Botany Bay, the Georges River, Cooks River and their tributaries.

Marine animals (Invertebrates) may be lawfully collected:

- By hand picking (gloves are permitted);
- With a single blade knife with a blade longer than it is wide
- Pliers may be used to help gather invertebrates except on rock platforms.
- Hand (Nipper) pumps are commonly used to collect Saltwater Nippers (barrel diameter not more than 85mm)

You are not permitted to:

- Use abalone as bait;
- Alter or shuck an Abalone, Rock Lobster or Turban Snail (e.g. removing the head, shell, tail or meat), until well away from the water;
- Alter the length of an invertebrate with a legal size by shucking and/or removing the head/shell/tail until well away from the water.
- Use a spear or speargun to take crabs from intertidal rock platforms.

Recreational Fishing License Fee

A NSW Recreational Fishing Licence Fee must be paid when fishing, collecting invertebrates, sea lettuce and blackfish weed (bait weed) in NSW and can be purchased at:

- www.onegov.nsw.gov.au/new/categories/recreational-fishing;
- By calling 1300 369 365 (Visa and MasterCard only) or;
- From standard and gold fishing fee agents and most Kmart stores in NSW.

Penalties

Penalties apply to persons who take or possess fish (including invertebrates, shells, etc.) taken in contravention of fishing closures, including aquatic reserves and intertidal protected areas.

Illegal Fishing

Report any illegal activity to Fisher's Watch 1800 043 536 (free call 24 hours state-wide).

Further information

For more information about fishing restrictions in NSW go to www.dpi.nsw.gov.au/fishing

© State of New South Wales through the NSW Department of Regional NSW 2021. You may copy, distribute and otherwise freely deal with this publication for any purpose, provided that you attribute the NSW Department of Primary Industries as the owner.

Published by the NSW Department of Primary Industries.

Disclaimer: The information contained in this publication is based on knowledge and understanding at the time of writing (February 2024). However, because of advances in knowledge, users are reminded of the need to ensure that information upon which they rely is up to date and to check currency of the information with the appropriate officer of the Department of Primary Industries or the user's independent adviser.

INT16/24075